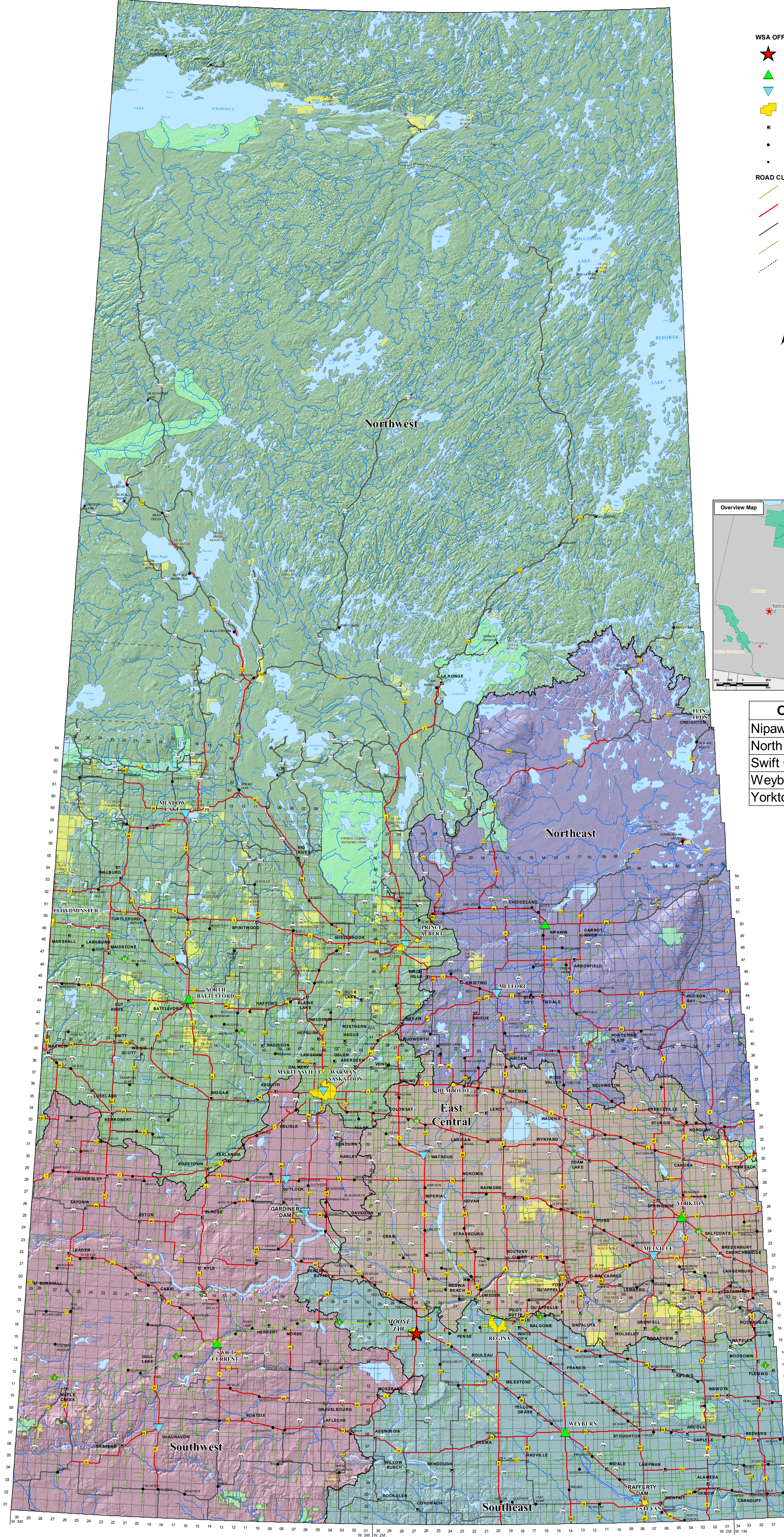


WATER SECURITY AGENCY

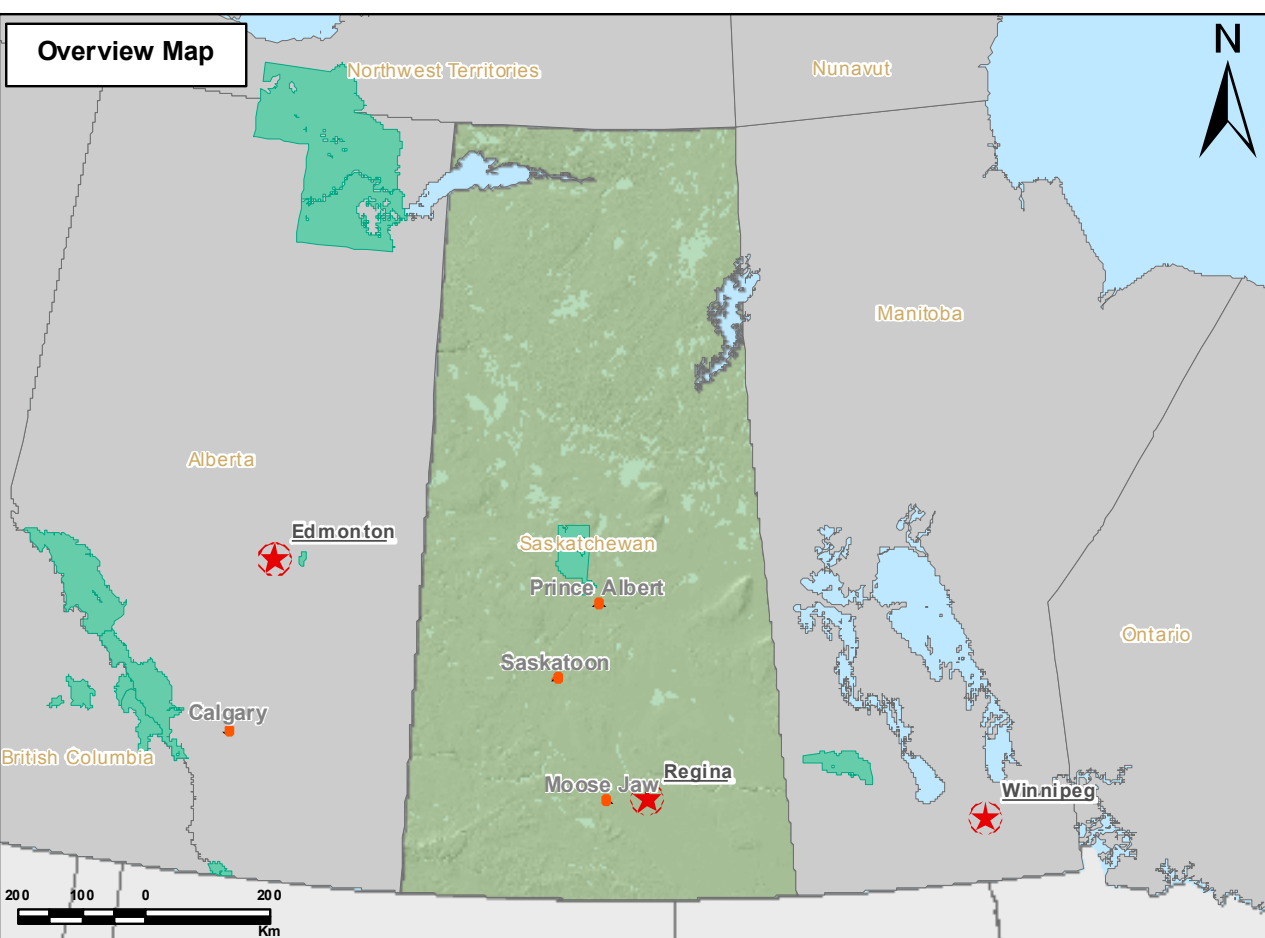
REGIONS AND OFFICES



LEGEND

- WSA OFFICES**
- ★ Head Office
 - ▲ Regional Office
 - ▼ Other Office
 - CITY
 - TOWN
 - VILLAGE
 - NORTHERN SETTLEMENT
- ROAD CLASSIFICATION**
- Divided (Paved)
 - Primary Highway
 - Secondary Highway
 - Municipal Roads
 - Winter Road (Access Only)
- WSA REGIONS**
- Northwest
 - Northeast
 - East Central
 - Southwest
 - Southeast
- Other Features:**
- RIVER
 - LAKES
 - INDIAN RESERVES
 - PARKS
 - TOWNSHIP
 - AIR WEAPONS RANGE

Scale: 1:1,250,000
Projected Coordinate System:
NAD 1983 CSRS UTM Zone 13N



OFFICE	CONTACT
Nipawin	306-862-1750
North Battleford	306-446-7450
Swift Current	306-778-8257
Weyburn	306-848-2345
Yorkton	306-786-1490

Date:
Map Produced: June 07, 2013

Project Folder #:
HIGIS

File Name:
Regions_and_Offices_27x44.mxd

Map Produced By:
Water Security Agency, Geomatics

Paper Size:
Custom 686 mm x 1118 mm (27 x 44 inches)

Copyright:
Map © 2013, Government of Saskatchewan
All Datasets © 2013, Government of Saskatchewan.

Disclaimer:
WSA prepares maps with varying degrees of accuracy and completeness dependent on the circumstances and available data. WSA makes no representation that this map will be sufficient for all uses. The user is advised to confirm the information contained herein in the event that precision and currency of data are required.