

Well Name: **SASK RESEARCH COUNCIL - NOKOMIS**

 WWDR #: **120926**
Well Location

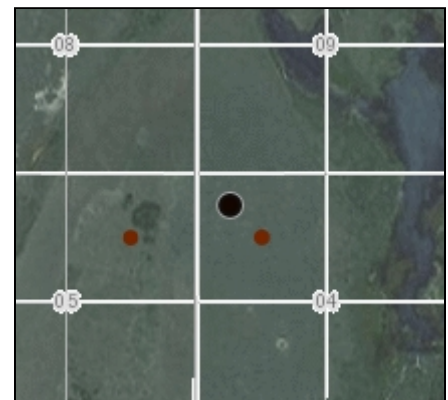
Land Location	NW-04-029 -23 -W2	Location of Well (in Quarter)
LSD	13	0 ft from N/S Boundary
Reserve		0 ft from E/W Boundary
RM:	280	
NTS Map:	72P06	Major Basin: 05
Elevation (ft)	1630	SubBasin: 75
Aquifer		

Well Information

Driller	ELK POINT DRILLING CORP	Length (ft)	Btm (ft)	Dia (in)	Material
Completion Date	1968.07.26	0	0	0	
Hole #		0	0	0	
Install Method	Drilled				
Borehole Depth (ft)	435				
Bit Dia (in)	0	Length (ft)	Bottom (ft)	Dia (in)	Slot (in)
Water Level	0	0	0	0	0
Flowing Head	0	0	0	0	0
Water Use	Research				
Well Use	Water Test Hole	Draw Down	0 ft		
Completion Method		Duration	0 hrs		
E-Log	SCANNED	Pumping Rate	0 igpm		
		Temperature	0 deg. F		
		Rec. Pumping Rate	0 igpm		

Lithology List

Depth (ft):	Material	Colour	Description
20	Sand	Grey	Fine
30	Till	Grey	Sandy
30	Till	Grey	Calcareous
34	Sand	Grey	Coarse
58	Till	Olive	Calcareous
60	Till	Olive	Sandy
100	Till	Grey	Calcareous
110	Sand	Grey	Sandy
130	Till	Green	Calcareous
140	Till	Grey	Sandy
186	Sand & Gravel	Grey	Medium-coarse
204	Silt	Grey	Calcareous
206	Sand	Unknown	Unknown
222	Silt	Grey	Coarse



226	Sand	Unknown	Coarse
240	Silt	Grey	Calcareous
262	Till	Grey	Sand Streaks
274	Silt	Grey	Calcareous
292	Sand	Grey	Medium-coarse
298	Silt	Grey	Calcareous
366	Gravel	Unknown	Rounded
390	Till	Grey	Calcareous
435	Bedrock	Unknown	Unknown
435	Clay	Grey	Noncalcareous