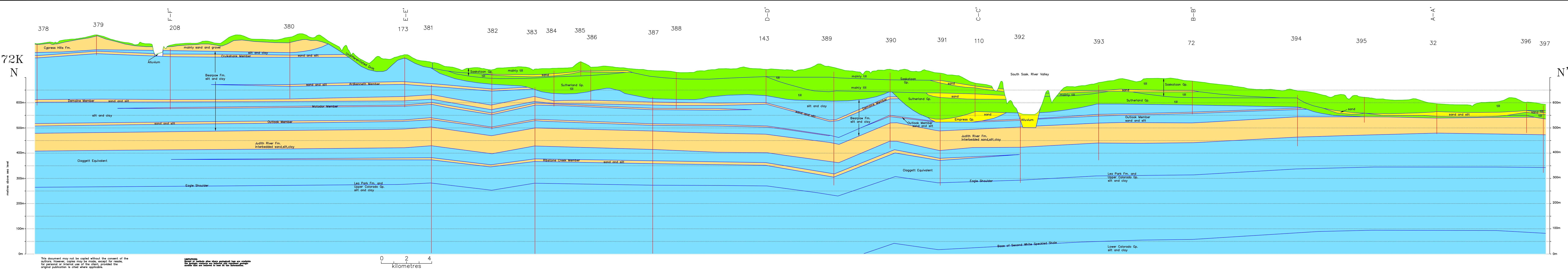


Prelate Area
72K
CROSS SECTION
N-N'

- Testhole or Well
- Drift- aquifer
- Drift- aquitard
- Bedrock- aquifer
- Bedrock- aquitard

Accompanies:
Meehins, H. and Simpson, M., 2007
Groundwater Resources of the Prelate
Area (72K), Saskatchewan. Saskatchewan
Research Council Report No.11975-1E07.



This document may not be copied without the consent of the authors. However, copies may be made, except for resale, for personal or internal use of the client, provided the original publication is cited where applicable.

DISCLAIMER:
Except as indicated where geological logs are available the geologic contents are inferred and represent geologic models that are believed to best fit the information.

0 2 4
kilometres