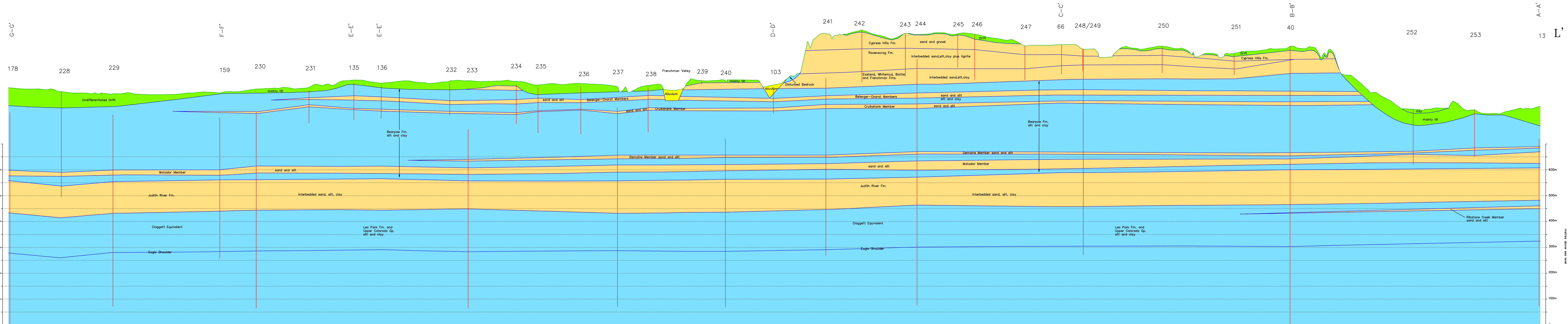







72F
L



Cypress Lake Area
72F
CROSS SECTION
L-L'

-  **Testhole or Well**

 **Drift- aquifer**
 **Drift- aquitard**
 **Bedrock- aquifer**
 **Bedrock- aquitard**

Accompanies:
 Meashula, H. and Simpson, M., 2007
 Groundwater Resources of the Cypress Lake
 Area (72F), Saskatchewan, Saskatchewan
 Research Council Report No.11874-1E07.

This document may not be copied without the consent of the authors. However, copies may be made, except for resale, for personal or internal use of the client, provided the original publication is cited where applicable.

Disclaimer:
 Except at testhole sites where geophysical logs are available, the geologic contacts are inferred and represent geologic models that are believed to best fit the information.

