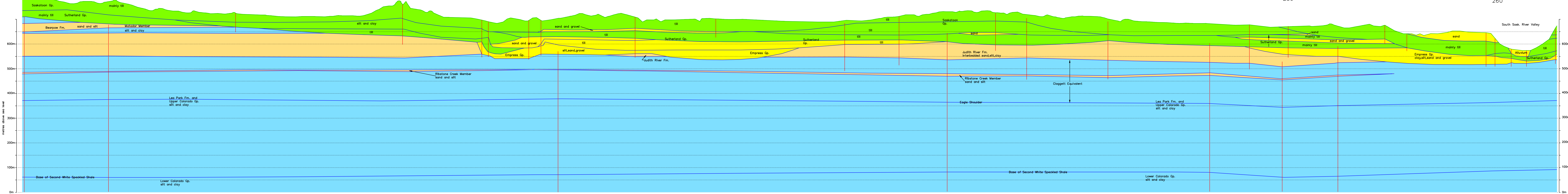


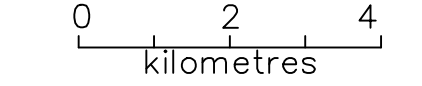
72K
I

241 185 242 149 243 244 245 246 247 117 248 249 250 251 81 252 253 40 254 255 256 257 258 259 5 260 261 262 263



This document may not be copied without the consent of the authors. However, copies may be made, except for resale, for personal or internal use of the client, provided the original publication is cited where applicable.

LIMITATIONS:
 Except as indicated otherwise, the geological units shown are based on the best available information and are not intended to represent precise measurements that are believed to best fit the information.



**Prelate Area
72K
CROSS SECTION
I-I'**

- Testhole or Well
- Drift-aquifer
- Drift-aquifer
- Bedrock-aquifer
- Bedrock-aquifer

Accompanies:
 Meathula, H. and Simpson, M., 2007
 Groundwater Resources of the Prelate
 Area (72K), Saskatchewan, Saskatchewan
 Research Council Report No. 11975-1E07.

acad drawing 72K_ldwg