

Acc 195

SRC 73B/7 1979  
NE13-9-39-5W3

WARMAN NO. 2  
OBSERVATION WELL  
WELL COMPLETION  
RECORD

338  
FIRST 20 FT DRILLED WITH 7 7/8" BIT, THEN TO DEPTH OF 349 FT 5 7/8" COLLAR WITH 6 3/4" BIT.  
340  
CASING CEMENTED WITH 21 SKS CEMENT, NO SURFACE RETURN  
COMPLETION ZONE DRILLED OUT WITH 5" BIT, CLEAN WATER  
342  
WELL DEVELOPED BY PUMPING  
CONSTRUCTION COMPLETED: MAY 18 1979  
RECORDER HOUSE GROUTED IN PLACE JUNE 5 1979  
RECORDER INSTALLED JUNE 12 1979  
344  
346  
348  
350  
352  
354  
356

NOTE: FOOTAGE DATUM IS TOP OF CASING

CASING: diameter 5.563" O.D.  
wall thickness 0.188"  
length: 346.1 ft

LEAD PACKER, THREADED ON TO EXTENSION

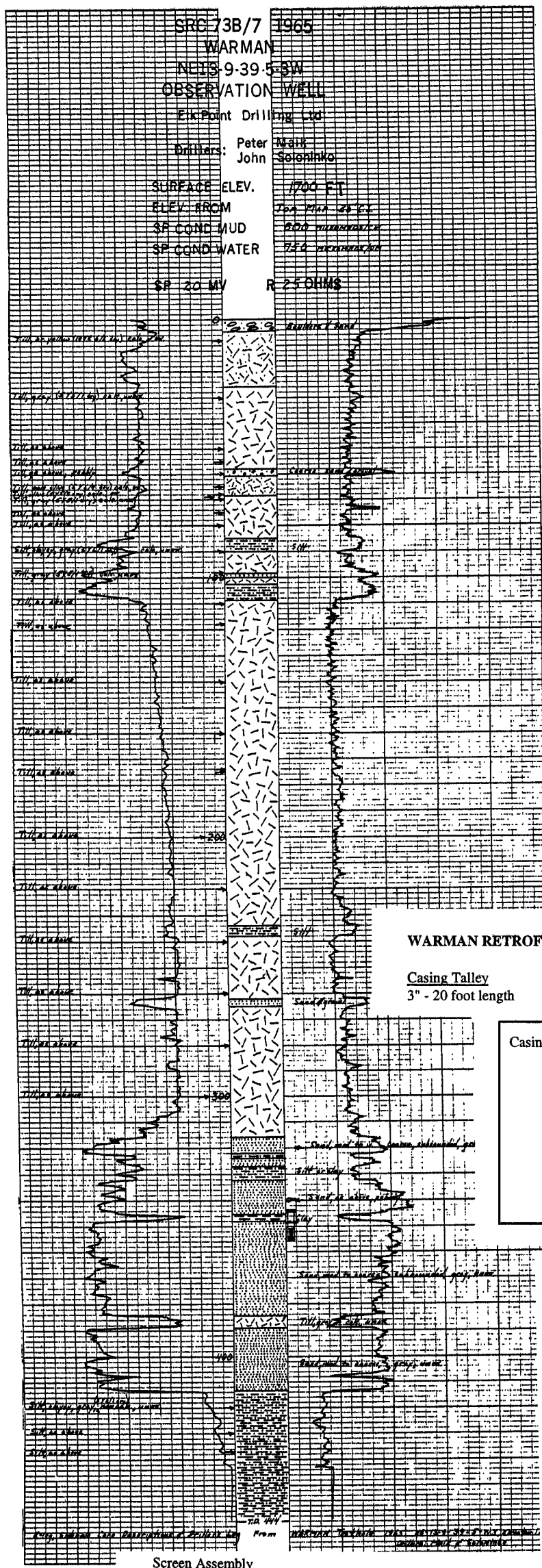
3" I.D. EXTENSION THREADED END CONNECTIONS  
LENGTH FROM TOP PACKER TO BOTTOM PLUG: 14.94 ft.

3" COUPLING

4' 4" JOHNSON TELESCOPIC SCREEN  
STAINLESS STEEL, THREADED END CONNECTIONS  
SLOT # 012

3" BASE PLUG

COMPILED BY: HIMATHUIS



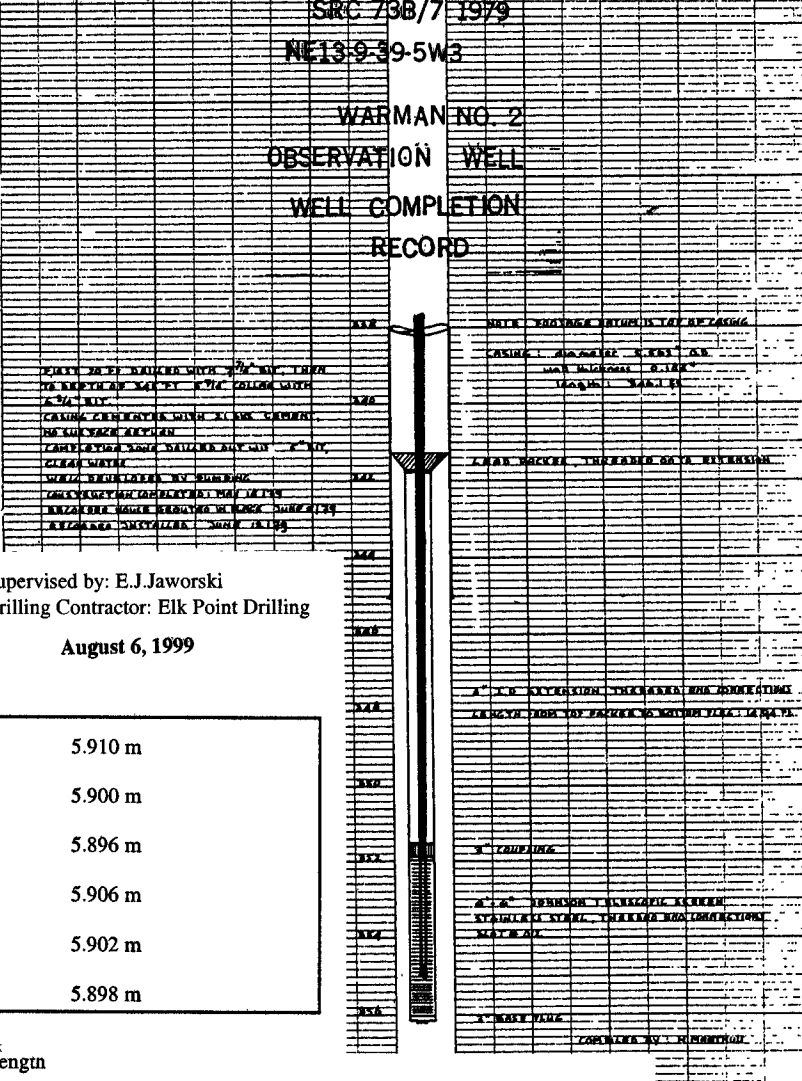
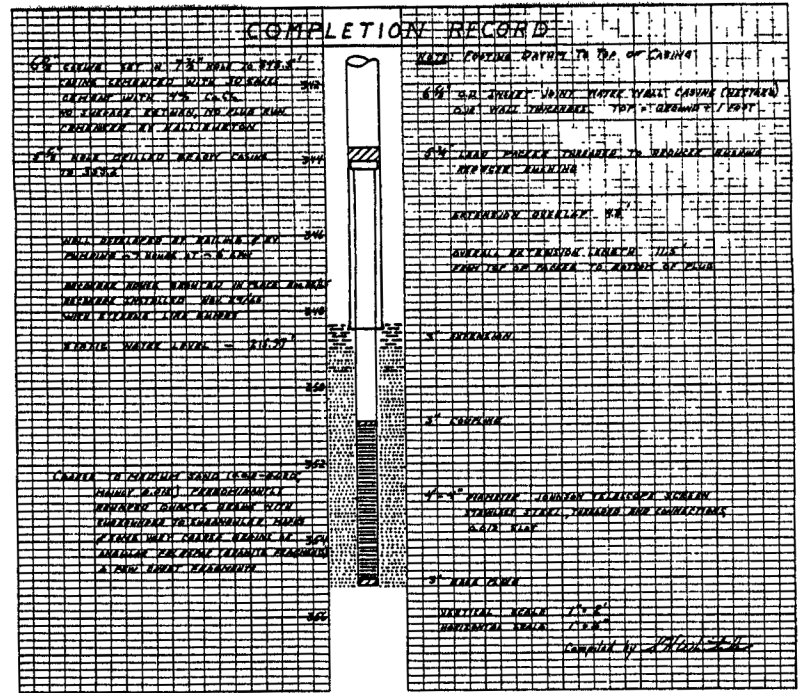
Screen Assembly  
1 1/4 inch dia Stainless Steel drive point screen slot 10  
- from bottom of screen to bottom of screen slots - 0.120 m  
- top of slots - 1.037  
- bottom of reducing bushing - 1.070 m  
- bushing coupling - 1.080 m  
- top of coupling - 1.173 m  
- top of pipe - 2.526 m  
Total length 356.4 feet of casing and screen assembly  
Measured TD inside casing - 108.36 m - 355.51 ft  
Put in 100 lbs of frac sand 12-20, 0.75  
- used 1/2 pail of 1/4 bentonite pellets (30 minutes) release  
- ~1 1/2 hours before grouting and bentonite pellets installed  
- used 22 bags of cement to grout the casing in. No return.

August 9, 1999 Supervised by: E.J. Jaworski  
wt - 65.924 - 0.253  
@ 65.671 @  
outside wt 1.92 @ 14:21  
26.42 to cement  
wt 65.9  
Td - 108.48 m

- August 11, 1999
- Pumped well - start at 09:00 pumping rate 20 l / 200 sec.
  - Annular space depth to top of cement - 18 m
  - Pump down water level in Annular space to ~ 17 m
  - Batch mix 4.5 tubs ~ 150 l cement neat - with 1 l PolyGel per tub - 1 tub 20 l, water + bag cement
  - Water sample @ 11:00 - 1 L.M.I.
  - 67.195 @ 11:01

Note: Top of 3 inch PVC casing is 0.253 meters above old steel casing

Warman No.1



Supervised by: E.J. Jaworski  
Drilling Contractor: Elk Point Drilling  
August 6, 1999

Casing #7	2.904 m
#8	2.902 m
#9	2.902 m
#10	2.892 m
#11	2.904 m
#12	2.894 m
#13	2.826 m
#14	2.902 m
#15	2.888 m
#16	2.902 m
#17	2.901 m
#18	2.901 m
#19	2.910 m
#20	bottom of 3" - 2.736 m top of 2" - 2.754 m
1 + 2 =	75.864 m or 248.90 ft.

Casing #21	6.046 m
#22	6.056 m
#23	6.054 m
#24	6.047 m
#25	6.046 m