

SRC 7BC/7 1967

UNITY SE1-28

SE1-28-40-21-W3

TESTHOLE

ELK POINT DRILLING LTD.
EDMONTON, ALBERTA

DRILLERS: PETER MAIK

JOHN SOLONINKO

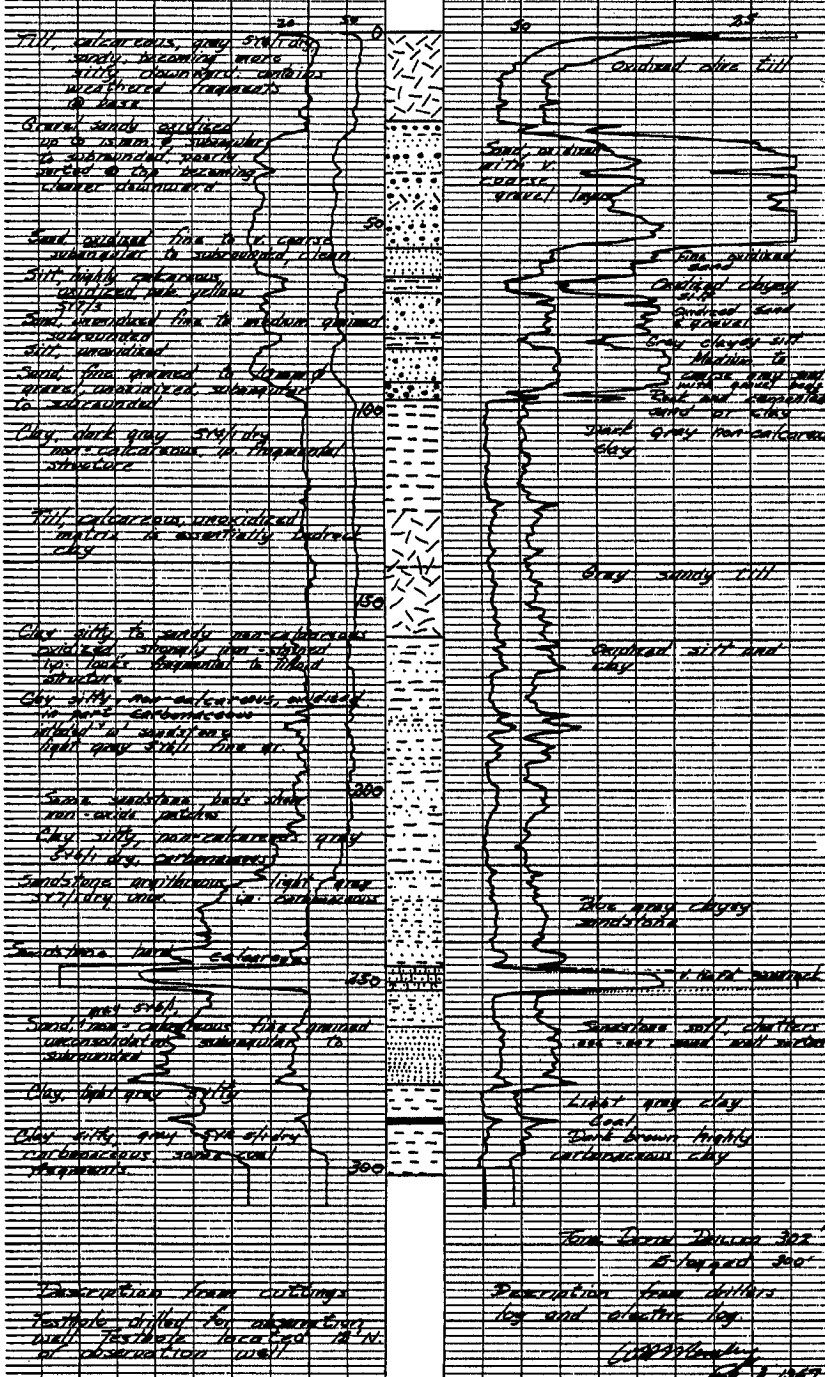
SURFACE ELEV. 2210 FT

ELEV. FROM TOP MAR 23' C.I.

SP. COND. : MUD 500 mmhos/cm @ 25°C

SP. COND. : WATER 100 mmhos/cm @ 25°C

SP 20 OHMS
50 MV R 50 OHMS



SRC 7BC/7 1967

UNITY SE1-28

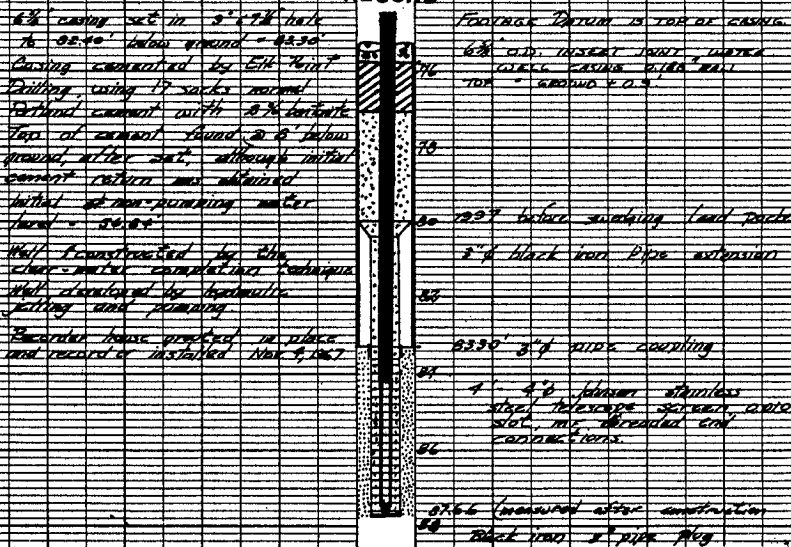
SE1-28-40-21-W3

OBSERVATION WELL

WELL COMPLETION

RECORD

Scale 1"=2'



UNITY Retrofit
September 12, 2000
w/l - 16.709 @ 07:26

Casing Talley

Well casing type: bottom 2 inch SCH 80 PVC
and 3 inch SCH 80 PVC with ASTM 480 thread
and o-ring seal lubricated with liquid teflon at top 3" casing

- 3" casing #4 from bottom of bushing to bottom of coupling - 0.011m
- Top of coupling - 0.131 m
- Top of pipe - 5.910 m + 1.582 m (2" pipe)

Pipe #3	5.840 m
Pipe #2	5.855 m
Pipe #1	5.836 m

Screen assembly

- 1 1/4 inch dia Stainless Steel drive point screen slot 10
- From bottom of sandpoint to:
- Bottom of screen slots - 0.110 m
- Top of screen slots - 1.014 m
- Bottom 2" pipe - 1.055 m
- Top of 2" pipe - 1.910 m
- 2 bags frac sand 12-20 - 23.53 m top of sand pac
- Top of Bentonite pellet - 23.11 m
- Six bags of grout mixed and pumped into annulus until returned to top

Supervised by: E.J.Jaworski, M.A.Simpson

Drilling Contractor: Elk Point Drilling

Greg Sander, Greg Metrunec

Unity Pumping September 18, 2000

w/l 16.895 m @ 18:13

stick up -0.150 m TOC 3 inch PVC above Steel casing
16.745 m

Td TOC 3 inch SCH 80 PVC - 26.86 m

- Start pumping @ 18:23
- w/l - 18.11 @ pumping rate 20 l / 65 sec
- Pumping @ maximum rate
- Pumped until 19:00
- Two centralizers - @ 5.65m and 11.20 m

September 19, 2000

- Reset logger
- w/l - 16.905
- 0.150
- 16.755 @ 07:37
- Small diameter float used