

SRC 73C/7 1967

1768

UNITY SE1-28

SE1-28-40-21-W3

TESTHOLE

ELK POINT DRILLING LTD.

EDMONTON, ALBERTA

PETER MAIK

DRILLERS:

JOHN SOLONINKO

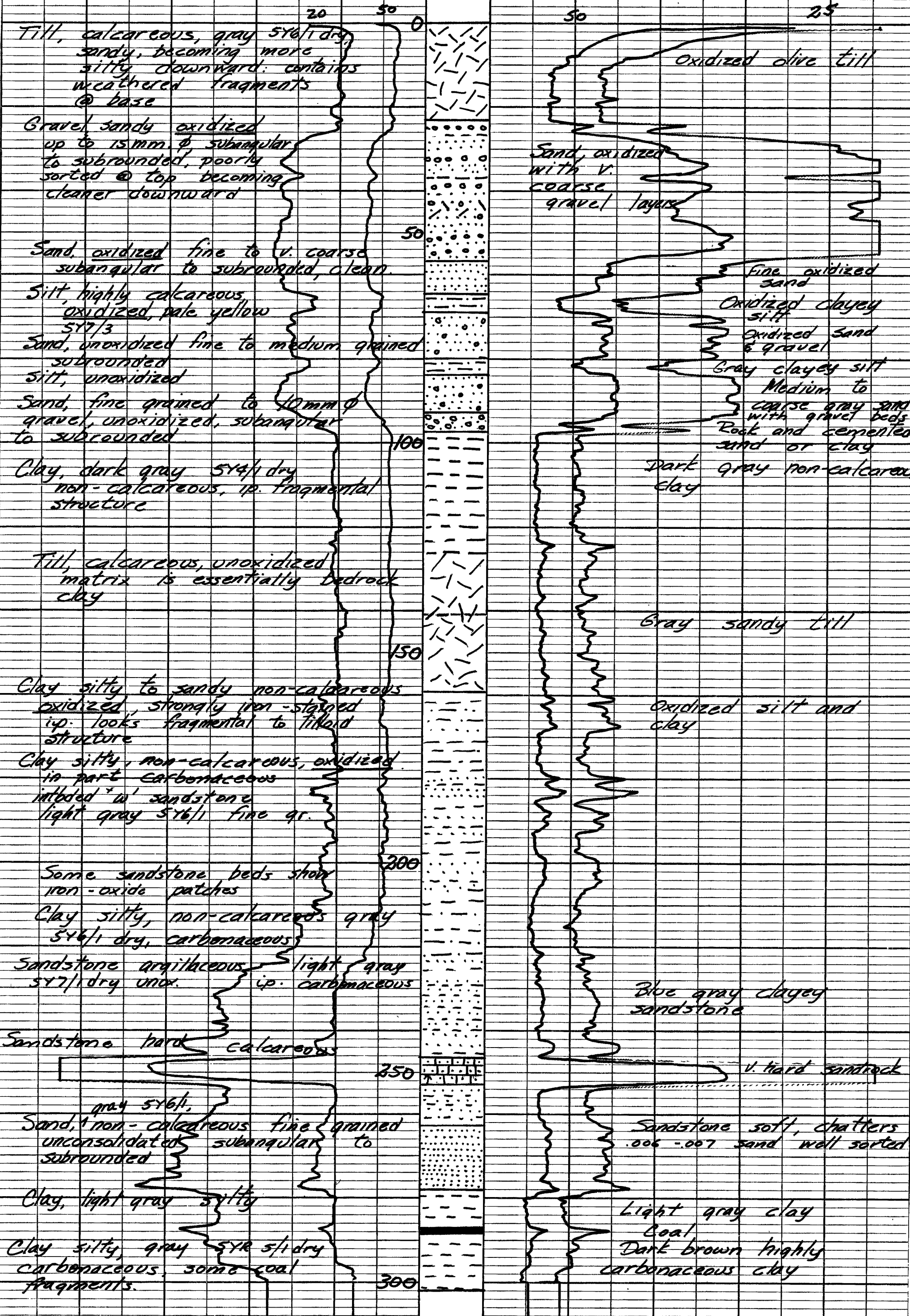
SURFACE ELEV. 2210 FT.

ELEV. FROM TOP MAP 25' C.I.

SP. COND.: MUD 500 MMHOS/CM @ 25°C

SP. COND.: WATER 190 MMHOS/CM @ 25°C

SP 20 50 MV R 25 50 OHMS



Description from cuttings
Testhole drilled for observation well. Testhole located 18' N. of observation well.

Total Depth Drilled 302'
5' logged 300'
Description from drillers log and electric log.
W.P.M. Mendenhall
Nov. 3, 1967.

QTR	LSD	SEC	TWP	RGE	MER	Day	Mon	Year
SE	01	28	- 40	- 21	- W 3	04	11	67

Line No.	From (ft)	To (ft)	Driller's Log and Report Form
	0	23	TILL
	23	57	SAND & GRAVEL - COARSE
	57	64	SAND - OXIDIZED
	64	69	CLAY - SILTY - OXIDIZED
	69	80	SAND & GRAVEL - OXIDIZED
	80	83	CLAY - SILTY - UNOXIDIZED
	83	98	SAND - GREY - GRAVEL STREAKS
	98	124	CLAY - GREY - NONCALCAREOUS
	124	160	TILL - GREY
	160	200	CLAY - SILTY - OXIDIZED
	200	248	SANDSTONE - GREY - CLAYEY
	248	254	SANDSTONE - CALCAREOUS
	254	278	SANDSTONE -
	278	300	CLAY
WELL DESCRIPTION			
STEEL	CASING	DIA 6 5/8" - LENGTH 83.3' - BOTTOM @ 82.4'	
STEEL	RISER	DIA 3" - LENGTH 3' - BOTTOM @ 83.6'	
S.S.	SCREEN	DIA 4" TELE. - LENGTH 4' - SLOT .010"	
WELL BOTTOM - 87.66' T.O.C.			
WATER LEVEL - 56.84'			
DRAWDOWN 10' AFTER 10 HRS @ 13 IGPM			
RECOMMENDED -----			
Contractor :		ELK POINT DRILLING CORP.	
Driller's Log By :			