

721/1 SRC 1968

RICETON

SE3-18-14-17-W2

TESTHOLE

ELK POINT DRILLING LTD.

EDMONTON, ALBERTA

PETER MAIK

DRILLERS: JOHN SOLONINKO

JOHN GURAL

SURFACE ELEV. FT

ELEV. FROM TOP MAP 25' CI

SP COND MUD 1100 MMHOS/CM

SP COND WATER 260 MMHOS/CM

SP 10 MV R 10 OHMS

Clay, calc., olive grey and olive
gypsiferous at 3', yellowish br.
staining at 8', oxid

Clay, st. calc., lt. olive grey and white silt

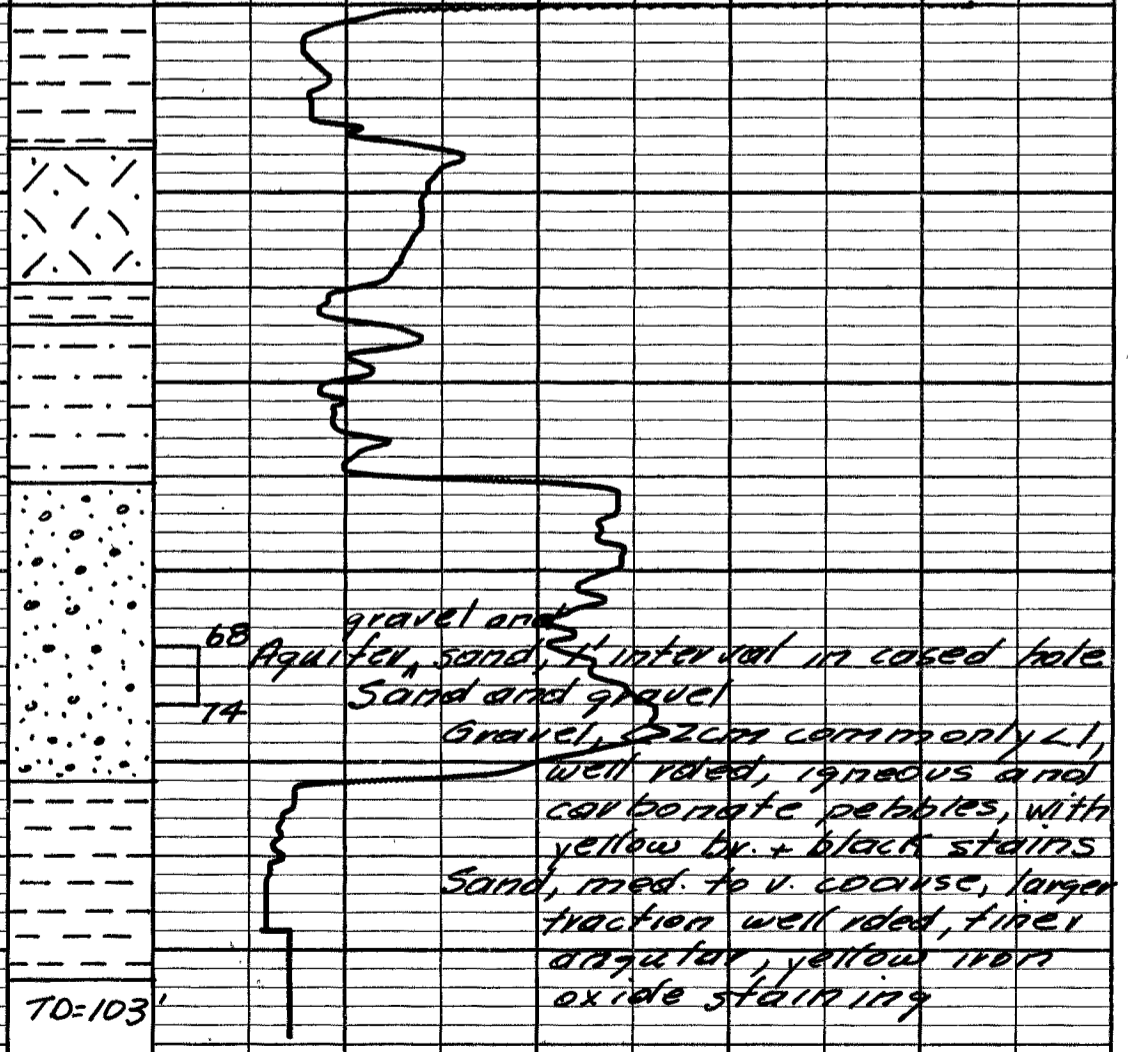
Till, calc., pale olive, unstained

Clay, silty, calc., lt. grey, stained (Fe)

Silt, calc., pale olive to olive, oxid

Silt as above

Clay, noncalc., dk grey and
grey, unoxid



SIDE HOLE CORE DESCRIPTION

Cutting sample description
Geology by: E. H. Hirstman
July 3, 1968