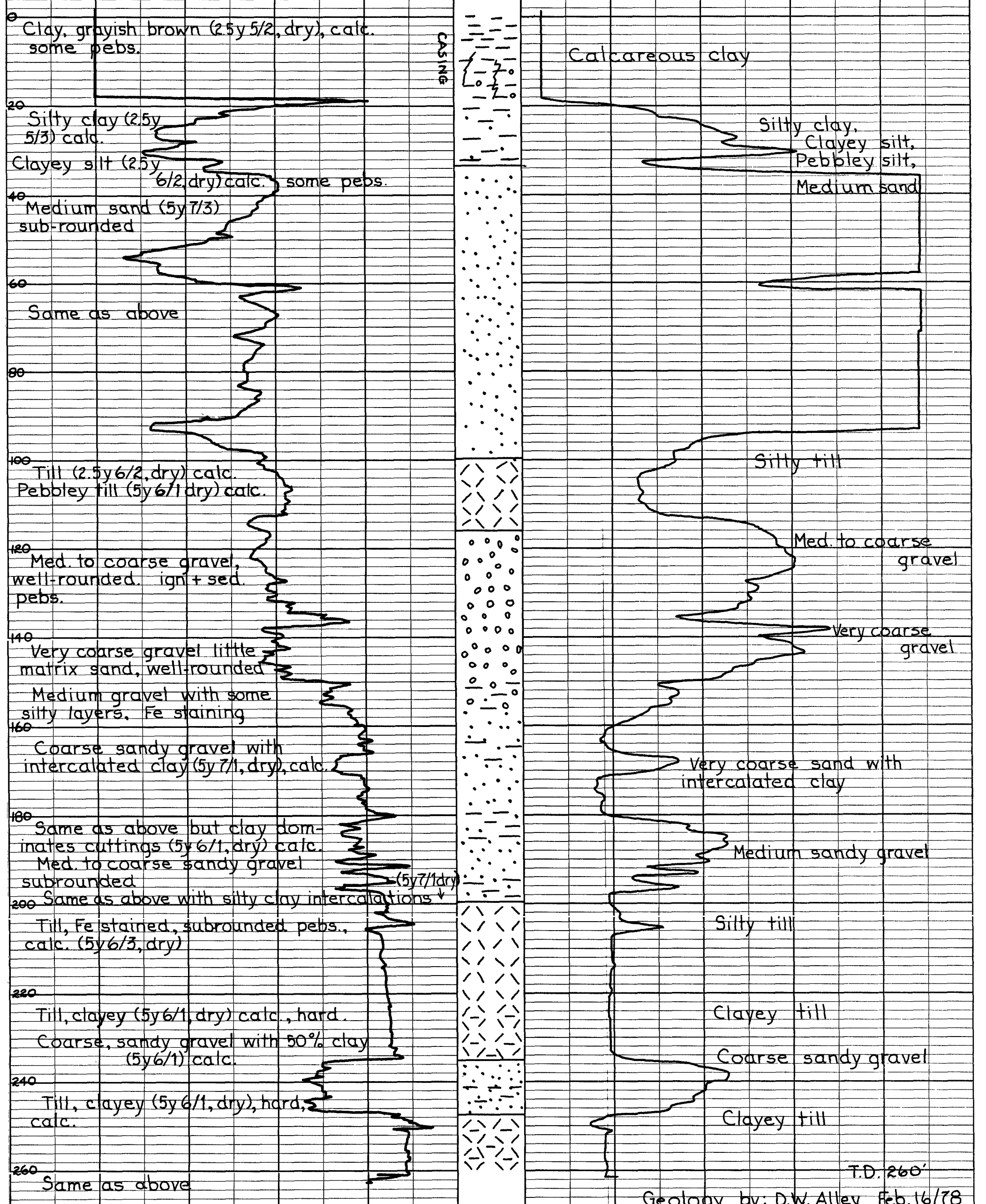


DOE 721/10 1978  
REGINA 530  
NW12-15-18-20-W2  
13:522300E/5596700N  
OBSERVATION WELL

CONTRACTOR:  
ELK POINT DRILLING  
DRILLER  
ROBERT BULL

SURFACE ELEV 1935 FT  
ELEV FROM TOP. MAP 25'01  
SP COND MUD 1600 MM HOS/CM  
SP COND WATER 1500 MM HOS/CM  
SP 10 MV R 10 OHMS

Logger #86



T.D. 260'  
Geology by: D.W. Alley Feb. 16/78