

SRC 73A/15 1967

Acq 1306

MELFORT NE8-7

NE8-7-46-17-W2

TESTHOLE

ELK POINT DRILLING LTD.

EDMONTON, ALBERTA

PETER MAIK

DRILLERS:

JOHN SOLONINKO

SURFACE ELEV. 1480 FT.

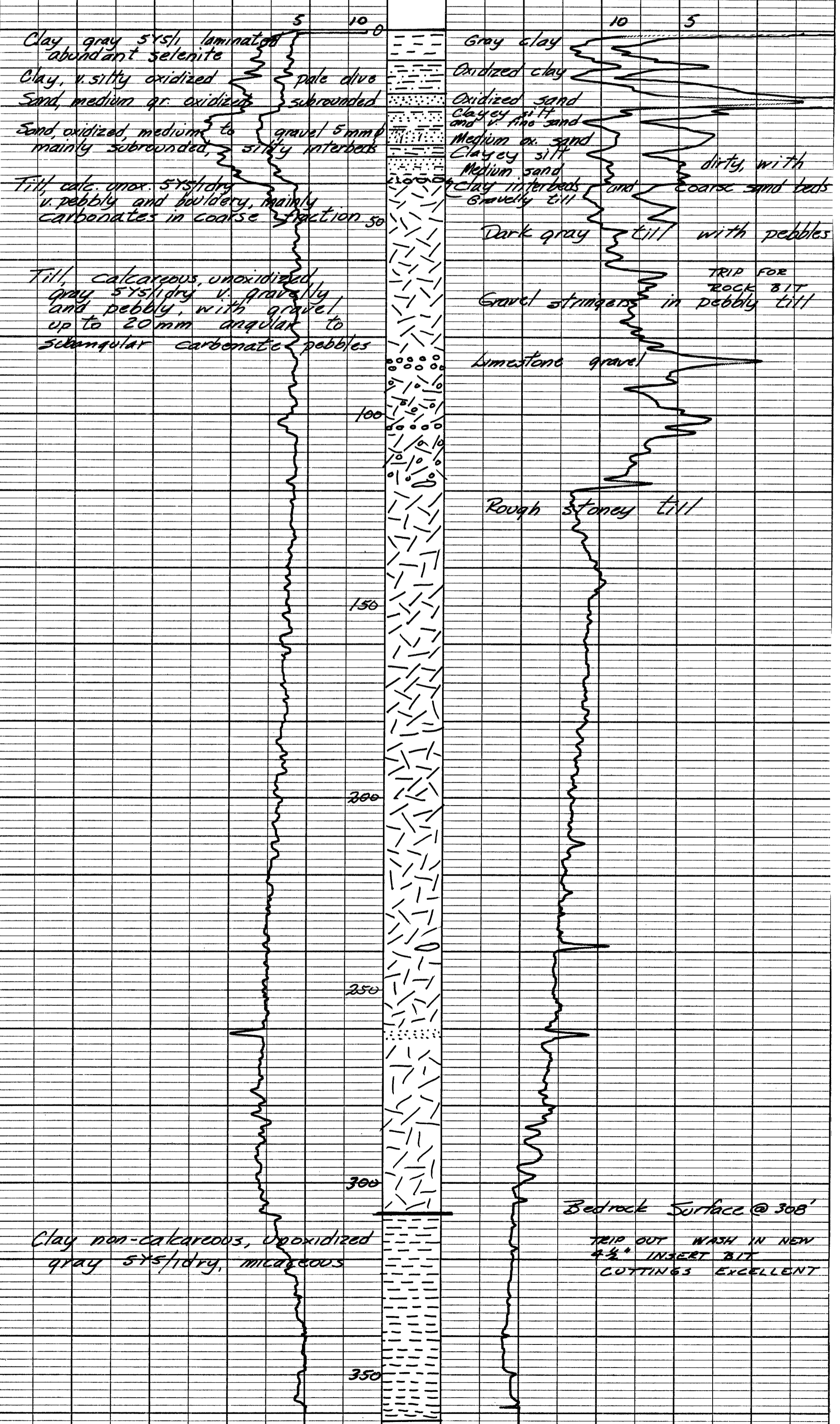
ELEV. FROM TOP MAP 25' C.I.

SP. COND.: MUD 2500 MMHOS/CM @ 25°C

SP. COND.: WATER 2500 MMHOS/CM @ 25°C

SP 5  
10 MV

R 5  
10 OHMS



Geology by WPA Mendeney  
November 13, 1967

TOTAL DEPTH DRILLED 362  
TOTAL DEPTH E-LOGGED 358