

SRC 73A/15 1967

MELFORT NE8-7

NE8-7-46-17-W2

OBSERVATION WELL WELL COMPLETION

RECORD

6 7/8" casing set in 9" and 7 1/8" hole to 32'. Casing cemented by Elk Point Drilling Ltd. using 7 sacks normal Portland cement with 4% bentonite. Initial cement return but cement settled outside casing during hardening.

Well constructed by the clear-water completion technique and developed by hydraulic jetting and pumping.

Recorder house grouted in place and recorder installed on November 13, 1967.

Initial non-pumping water level 23.38'



SCALE 1" = 2'
FOOTAGE DATUM IS TOP OF CASING.
30 6 7/8" O.D. INSERT JOINT WATER WELL CASING 0.188" THICK WALL
TOP OF CASING = GROUND + 0.45'

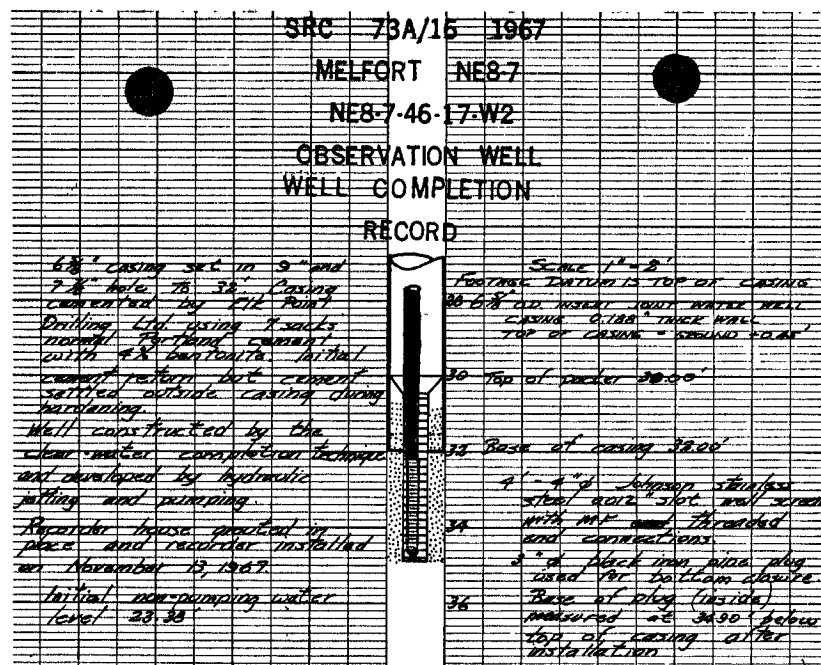
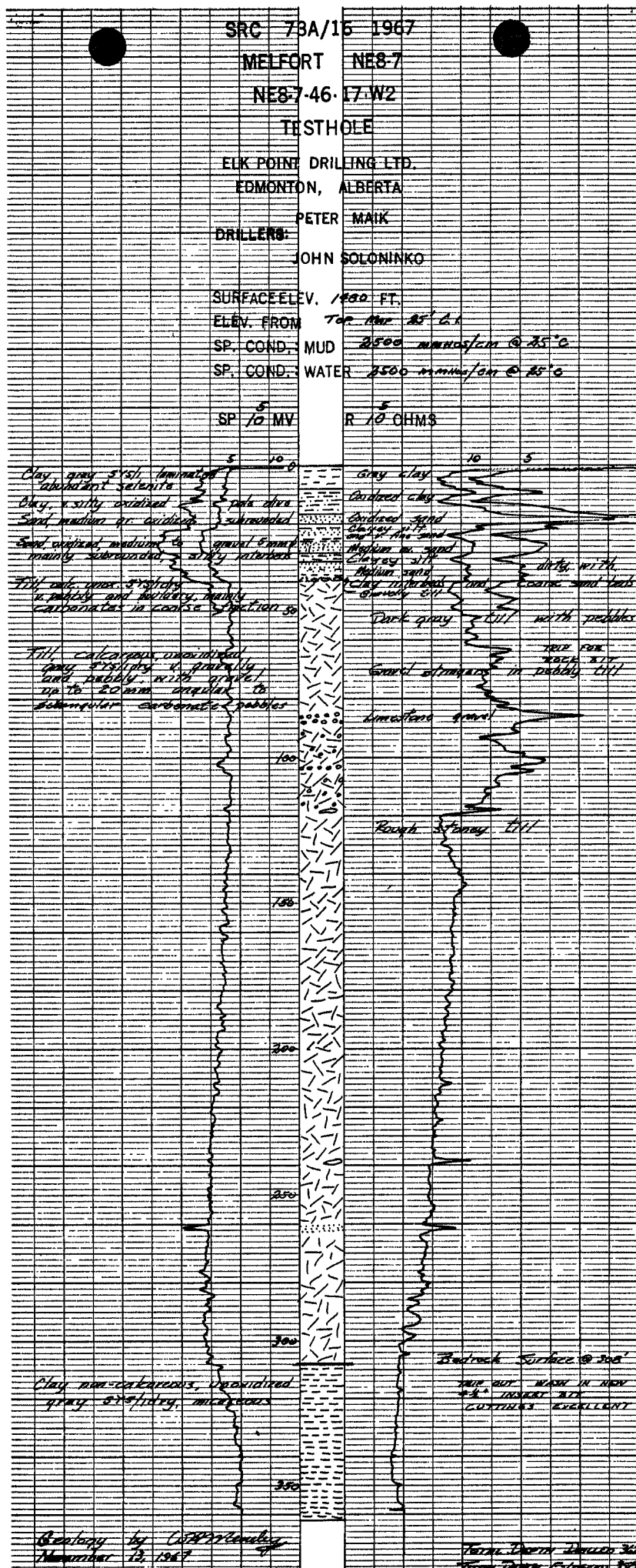
30 Top of packer 30.00'

32 Base of casing 32.00'

34 4' - 4" Johnson stainless steel 0.012" slot well screen with MF and threaded end connections.

3" black iron pipe plug used for bottom closure.

36 Base of plug (inside) measured at 34.90' below top of casing after installation



SRC MELFORT - September 17, 2001 Retrofitted

Washout Procedure

- wl - 7.208 m @ 12:29
- pumped from bottom of well with centrifugal pump. Add ~ 20 litres of water and pumped.
- Td - 9.860 m = 32.35 ft
- 10.62 m = 38.84 ft washed out

Screen Assembly and Casing Talley:

- From bottom of sandpoint up to:
 - bottom of 1 1/4 inch screen slots 0.110 m
 - top of 1 1/4 inch screen slots - 1.020 m
 - bottom of reducing bushing - 1.054 m
 - bottom of casing - 1.065 m
 - top of casing (2" casing) - 2.065 m
 - top of 4 1/2" casing length and screen assembly #1 - 4.629 m
- Second casing length #2 - 6.144 m
Total length = 10.773 meters
- stick up 0.150 m above old casing

Completion

- top frac sand 8.65 m (10-20) to top of steel casing
- 2 l - bentonite pellets - 8.53
- 2 l - 12 - frac sand added - 8.2 m

SRC Melfort was retrofitted using 2 inch SCH 80 PVC pipe, socket glued to 6.144 m of 4 1/2 inch S200 casing. A 1 1/4 inch Slot 0.015 Johnson Tm stainless steel screen assembly, coupled to the 2 inch casing 4.629 m in length, was gravel packed with 10-20 fractionated sand. The annular space between the existing steel casing was grouted with hydrated Cetco Tm Crumbles #8 grout. The total length of Well from top of casing is 10.377 m. The casing stickup above the old casing is 0.150 m. The well was completed by SRC (EJJ & DAZ).