

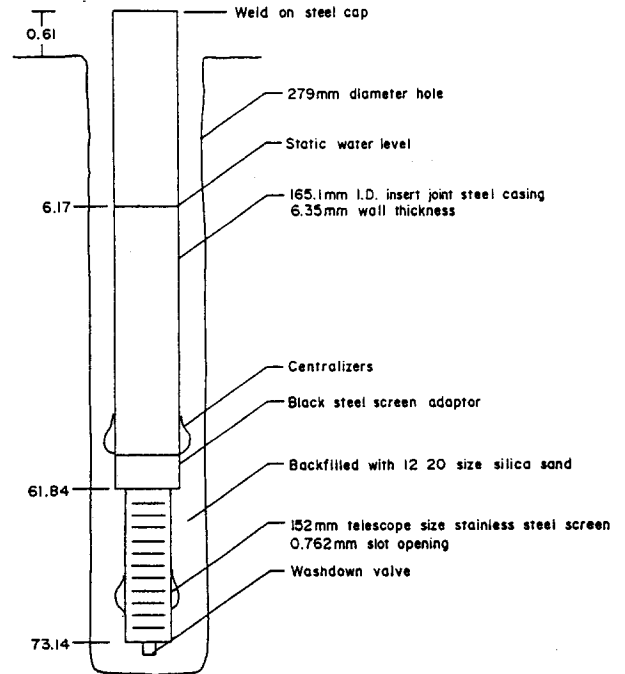
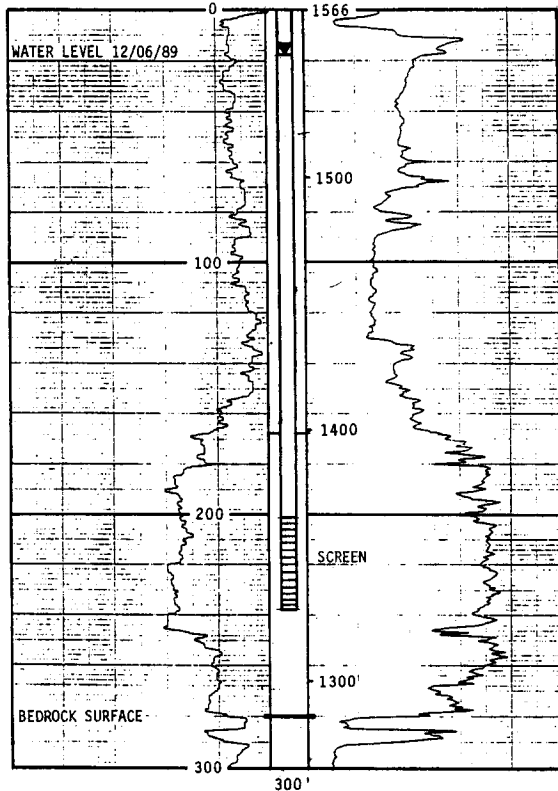
73K/1 SRC 1992
MEADOW LAKE
SW-04-09-60-16-W3

Meadow Lake Pulp Mill
Beckie Hydrogeologist LTD

MEADOW LAKE PULP MILL

TESTHOLE	CM19-89 (TWI-89)	ENGINEER	BECKIE HYDROGEOLOGISTS
S.P. COND. WATER	µmhos/cm	LOC.	SW LSD 04 Sec 08 Twp 60Rge16W3
S.P. COND. MUD	µmhos/cm	DATE	April 17, 1989
TOTAL DEPTH	91.4 metres	CONTRACTOR	Hi-Rate Drilling Ltd.
TOPO ELEVATION	477.308 masl	GEOLOGIST	Gary Pasloake, P. Eng.
S.P.	10 mvolts	RESISTIVITY	10 ohms

SW-04-09-60-16-W3



NOTE: DEPTHS IN METRES BELOW GROUND

BECKIE HYDROGEOLOGISTS LTD.		MEADOW LAKE PULP MILL	
GROUNDWATER CONSULTANTS		CONSTRUCTION DETAILS OF	
SCALE NOT TO SCALE		TESTWELL 1-89 (CM19-89)	
DATE	JUNE 12/89	FIGURE	

SRC MEADOW LAKE OBSERVATION WELL INSTALLATION

- | | | |
|------|-------|--|
| 0 - | 3 | Clay, dark olive-brown, soft, oxidized. |
| 3 - | 11 | Till, sandy, medium to dark olive-brown, moderately soft, oxidized. |
| 11 - | 45 | Till, sandy-clayey, dark grey, moderately hard with depth, non-oxidized, some thin sand layers. |
| 45 - | 51 | Sand, very fine, silty, dark brown-grey. |
| 51 - | 85 | Sand, fine-coarse, with fine gravel layers, medium brown-grey to dark grey, clean, a few silty layers. |
| 85 - | 89 | Clay, light to medium grey, silty to silt, soft. |
| 89 - | 91.4m | Clay-shale, dark grey-brown to brown-black, with hard white specs. |

SRC Meadow lake observation well was installed July 2, 1992 by EJJ and DAZ. The following is a brief outline of the installation.

WL 5.772 TOC @ 10:47 July 2, 1992 before casing cut
 0.815 m casing cutoff
 WL 4.957 TOC @ 10:47 July 2, 1992 after casing cut off

Casing was cut off using a gas powered circular 12 in abrasive blade. Gas power Auger was used to drill a battery casing hole adjacent to the well. The augering was not successful because the annulus of the well was open to about 2 m and .5 m in diameter. The battery case was rammed into the annulus adjacent to the well casing. The annular cavity was filled with topsoil to ground level. The observation well housing was set and leveled on approximately 3 inches of dry gravel and cemented inside and outside the housing.

A centrifugal pump was installed to pump out any floating debris.

Float was centered and battery driven Hoimega recorder was installed.

WL 4.980 TOC @ 18:10 July 2, 1992 chart set