

SRC 73B/13 1965  
LILAC NE1-2  
NE-12-44 14 W3  
OBSERVATION WELL

Elk Point Drilling Ltd

Drillers: Peter Maik \*  
John Soloninko

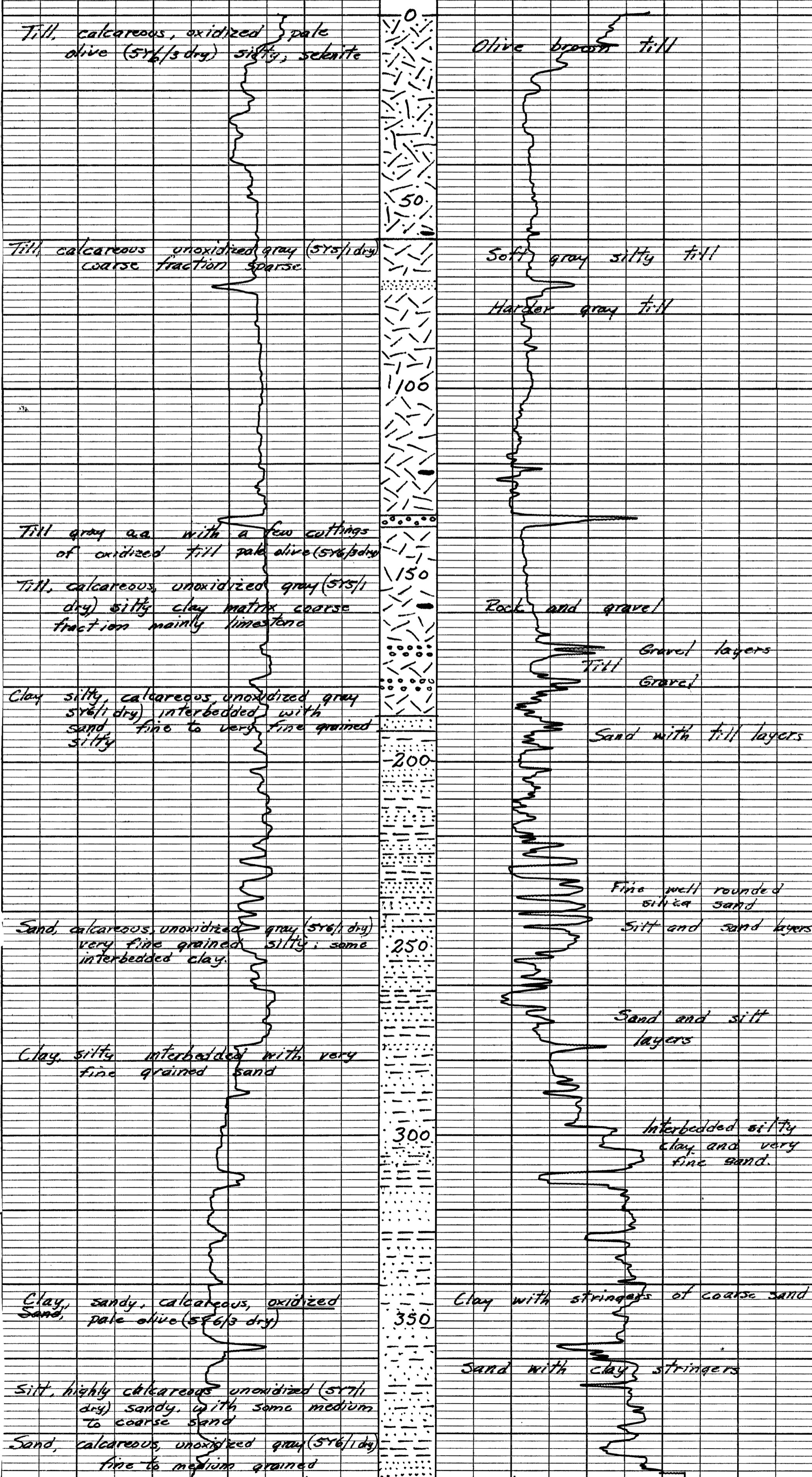
SURFACE ELEV. 1800 FT

ELEV. FROM TOP MAP 25' C.I.

SP COND MUD 780 MICROMHOS/CM

SP COND WATER 360 MICROMHOS/CM

SP 20 MV R 25 OHMS



TOTAL DEPTH DRILLED 393'  
E-LOGGED 392'

BASED ON CUTTINGS DESCRIBED BY  
LTP Monday October 9, 1965.

BASED ON DRILLERS LOG