

COMPLETION RECORD

SCALE 1" = 2'

6 5/8" casing set in 7 7/8" hole to 297.45'
Casing stuck @ this depth. 7 7/8" hole drilled to 325'. Casing cemented with 30 sacks cement with 4% CaCl₂. No surface return. No plug run. Cement found @ 290', bottom of cement @ 315'.
Cemented by Dowell

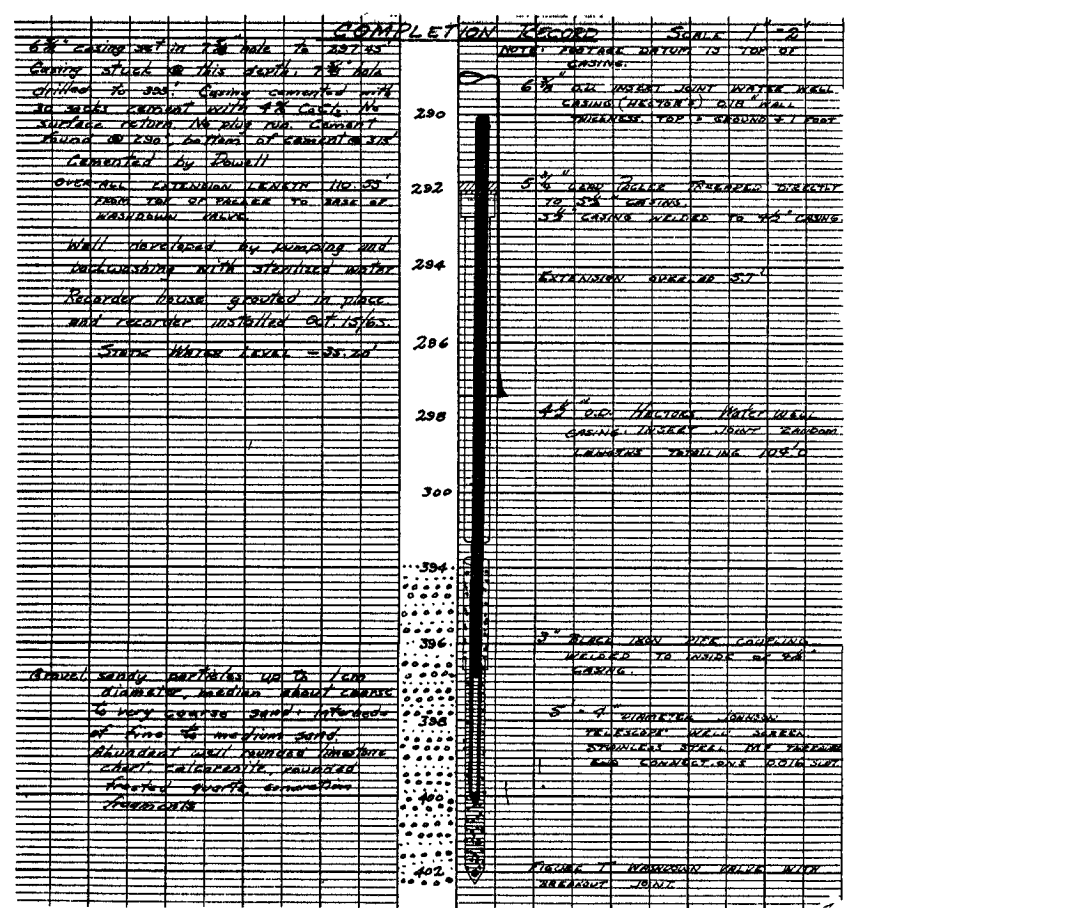
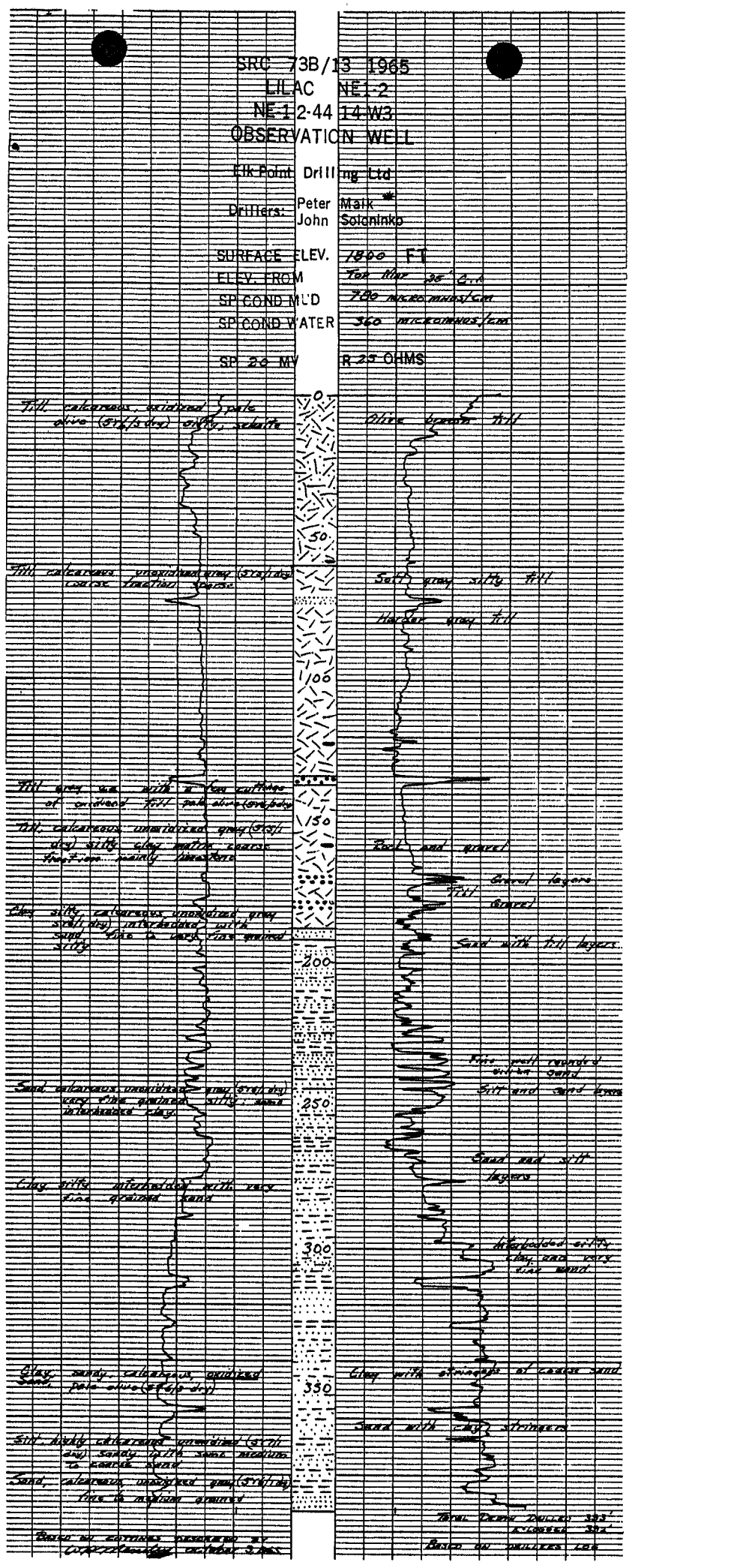
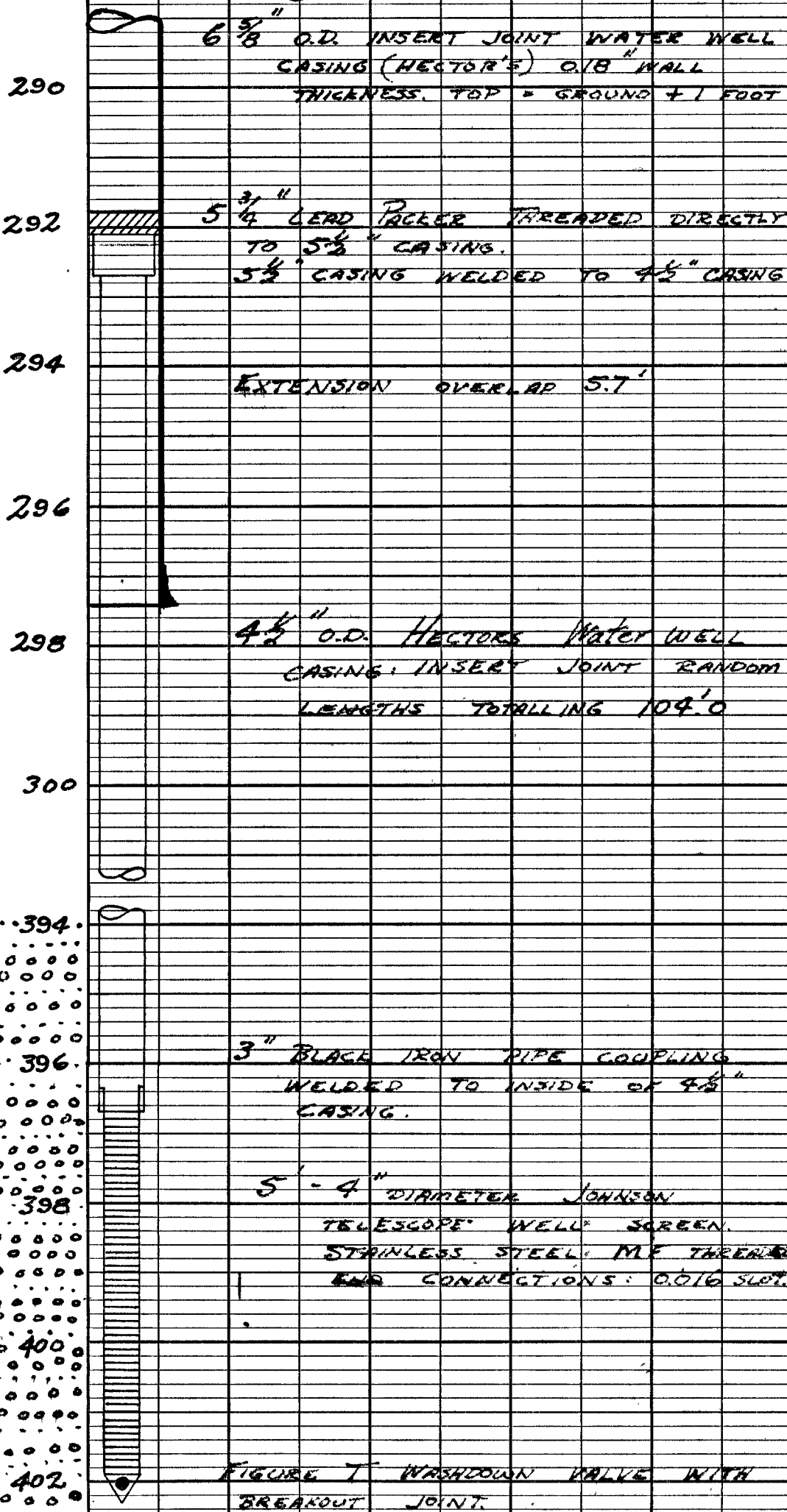
OVER-ALL EXTENSION LENGTH 110.55'
FROM TOP OF PACKER TO BASE OF WASHDOWN VALVE.

Well developed by pumping and backwashing with sterilized water
Recorder house grouted in place and recorder installed Oct. 15/65.

STATIC WATER LEVEL - 35.20'

Gravel sandy particles up to 1cm diameter, median about coarse to very coarse sand. Interbeds of fine to medium sand. Abundant well rounded limestone chert, calcarenite, rounded frosted quartz, concretion fragments

NOTE: FOOTAGE DATUM IS TOP OF CASING.



LILAC Retroft
September 12, 2000
Casing Talley
Well casing type: bottom 2 inch SCH 80 PVC and 3 inch SCH 80 PVC with ASTM 480 thread and o-ring seal lubricated with liquid teflon at top 3" casing
3 inch casing
- #1 - 3 inch from bushing to bottom of coupling - 0.08 m
- To top of coupling - 0.130 m
- To top of pipe - 5.902 m
- 2" pipe 2.138 m
#2 - 3 inch - total length - 5.862 m
#3 - 3 inch - total length - 5.846 m

Casing	#1	5.920 m
#2	5.930 m	
#3	5.922 m	
#4	5.932 m	
#5	5.918 m	
#6	5.922 m	
#7	5.930 m	
#8	5.939 m	
#9	5.922 m	
#10	5.910 m	
#11	5.906 m	
#12	5.916 m	
#13	5.937 m	
#14	5.933 m	
#15	5.934 m	
#16	5.905 m	
#17	5.909 m	

Screen assembly
1 1/4 inch dia Stainless Steel drive point screen slot 10
- From sandpoint to:
- Bottom of screen slots - 0.110 m
- Top of screen slots - 1.028 m
- Bottom 2" pipe - 1.052 m
- Top of 2" pipe - 1.634 m
w# 10.160 m @ 17:44 10.800 m
-0.644 m
10.156 m @ 17:46

September 13, 2000
- Added three bags of frac sand
- Top of frac sand - 15.06 m (377.50)
- Top of bentonite pellets 114.38 m - 375 feet
- 17 bags of grout mixed and pumped into annulus
Supervised by: E.J. Jaworski, M.A. Simpson
Drilling Contractor: Elk Point Drilling
Greg Sander, Greg Metrunec

September 19, 2000 Pumping
- Td - 121.96 m
- stick-up - 0.150 m TOC 3 inch PVC above Steel casing
- Start pumping @ 13:13
- Pumping rate 20 l / 64 sec.
- Shut pump off @ 14:15
- 10.385 m
-0.150 m
10.235 m @ 15:13 EJJ