

COMPLETION RECORD

NOTE: FOOTING DATUM TO TOP OF CASING

6 5/8" CASING SET IN 7 7/8" HOLE TO 245'
CASING CEMENTED WITH 26 SACKS
CEMENT WITH 4% CaCl₂.
SURFACE RETURNS, NO PLUG RUN.
CEMENTED BY HALLIBURTON

240

5 5/8" HOLE DRILLED BELOW CASING TO 251.9'
JETTED HOLE FROM 246' TO 252.3'

242

WELL DEVELOPED BY PUMPING ~ 1 1/2 HOURS
AT 7 1/2 GPM, 6 MINUTES AT 15 GPM, &
~ 4 HOURS AT 6 GPM

RECORDER HOUSE GROUTED IN PLACE
AND RECORDER INSTALLED NOV. 6/65

244

STATIC WATER LEVEL - 25

246

FINE TO VERY FINE SAND (0.004-0.010",
90% PASSES 0.007 SLOT SCREEN).
PREDOMINANTLY SUBROUNDED TO
SUBANGULAR QUARTZ WITH LESSER
FELDSPAR, MUSCOVITE & Biotite
COMMON, ~ 10% DARK MINERALS,
PROBABLY HORNERLENDE & SPENE.

248

250

252

6 5/8" O.D. INSERT JOINT WATER WELL CASING
(HECTOR'S) 0.118" WALL THICKNESS.
TOP = GROUND + 0.65'

TOP OF 3" EXTENSION ORANGE-PEELED TO 4 1/2"
3 SPACERS WELDED TO EXTENSION TO CENTER SCREEN

EXTENSION OVERLAP 3.4'

OVERALL EXTENSION LENGTH 10.63'
FROM TOP OF PACKER TO BOTTOM OF PLUG

3" EXTENSION

3" COUPLING

4 SACKS 20-40 FRAC-SAND - 1 1/2 SACKS WASHED
OUT OF SCREEN

5'-4" DIAMETER JOHNSON TELESCOPE SCREEN
STAINLESS STEEL, THREADED END CONNECTIONS
0.014 SLOT

3" BASE PLUG

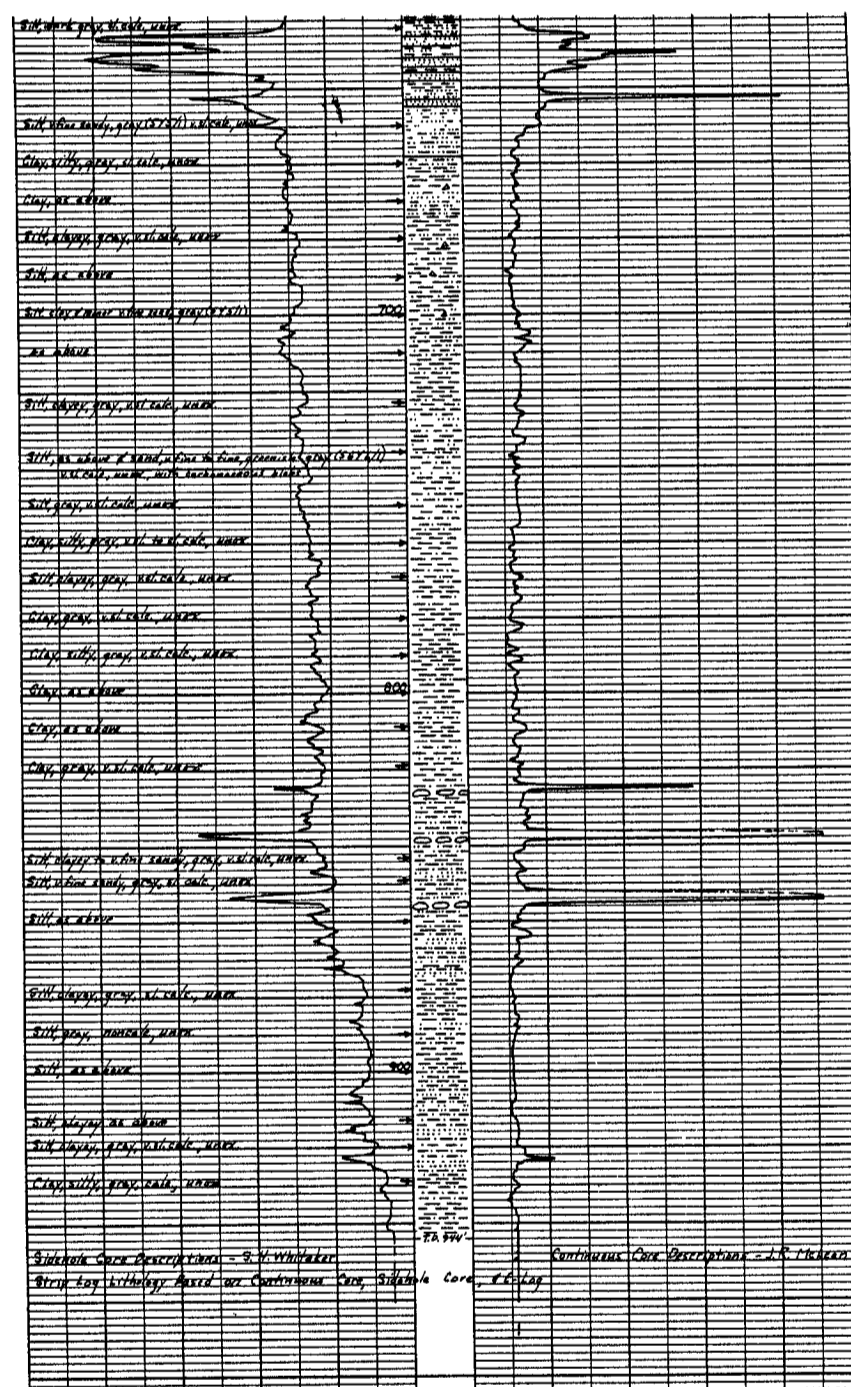
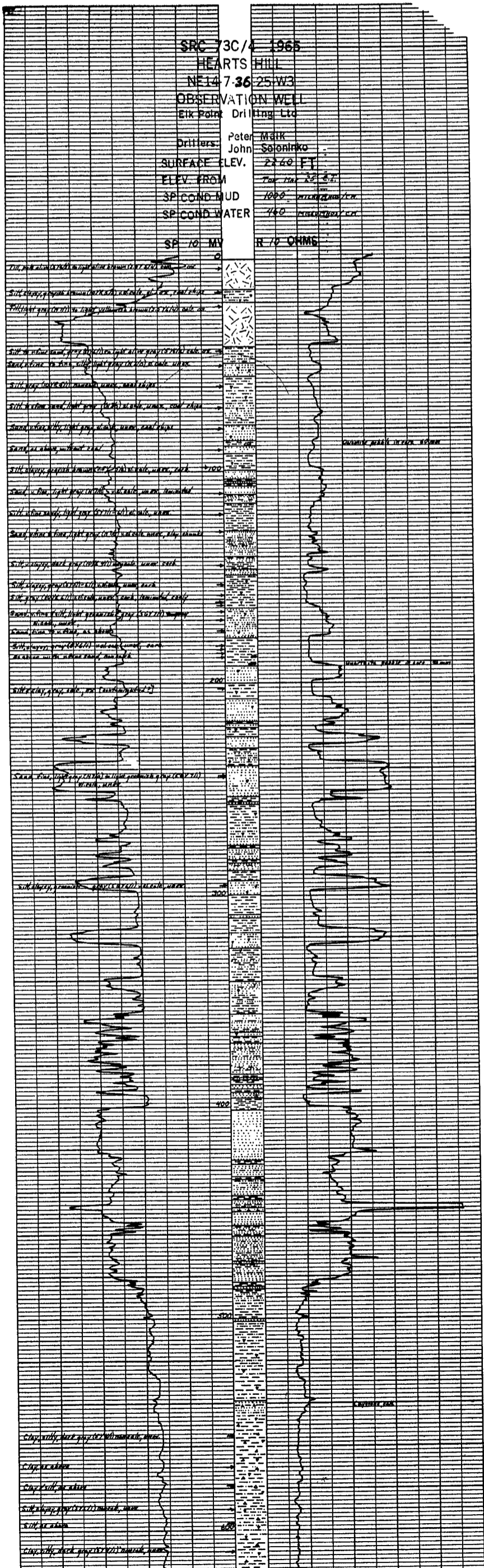
3/8" PRONGS WELDED TO PLUG TO CENTER SCREEN

VERTICAL SCALE 1" = 2'

HORIZONTAL SCALE 1" = 16"

Compiled by *L.H. Whitaker*

SRC 73C/4 1968
HEARTS HILL
NE 14 7.36 25W3
OBSERVATION WELL
Elk Point Drilling Ltd
Drillers: Peter MAIK
John Selenko
SURFACE ELEV. 2240 FT
ELEV. FROM 2240 FT
SP COND MUD 1000
SP COND WATER 140
SP 10 MV
R 10 OHMS



COMPLETION RECORD

NOTE: FOOTING DATUM TO TOP OF CASING

6 5/8" CASING SET IN 7 7/8" HOLE TO 245'
CASING CEMENTED WITH 26 SACKS
CEMENT WITH 4% CaCl₂.
SURFACE RETURNS, NO PLUG RUN.
CEMENTED BY HALLIBURTON

240

5 5/8" HOLE DRILLED BELOW CASING TO 251.9'
JETTED HOLE FROM 246' TO 252.3'

242

WELL DEVELOPED BY PUMPING ~ 1 1/2 HOURS
AT 7 1/2 GPM, 6 MINUTES AT 15 GPM, &
~ 4 HOURS AT 6 GPM

RECORDER HOUSE GROUTED IN PLACE
AND RECORDER INSTALLED NOV. 6/65

244

STATIC WATER LEVEL - 25

246

FINE TO VERY FINE SAND (0.004-0.010",
90% PASSES 0.007 SLOT SCREEN).
PREDOMINANTLY SUBROUNDED TO
SUBANGULAR QUARTZ WITH LESSER
FELDSPAR, MUSCOVITE & Biotite
COMMON, ~ 10% DARK MINERALS,
PROBABLY HORNERLENDE & SPENE.

248

250

252

6 5/8" O.D. INSERT JOINT WATER WELL CASING
(HECTOR'S) 0.118" WALL THICKNESS.
TOP = GROUND + 0.65'

TOP OF 3" EXTENSION ORANGE-PEELED TO 4 1/2"
3 SPACERS WELDED TO EXTENSION TO CENTER SCREEN

EXTENSION OVERLAP 3.4'

OVERALL EXTENSION LENGTH 10.63'
FROM TOP OF PACKER TO BOTTOM OF PLUG

3" EXTENSION

3" COUPLING

4 SACKS 20-40 FRAC-SAND - 1 1/2 SACKS WASHED
OUT OF SCREEN

5'-4" DIAMETER JOHNSON TELESCOPE SCREEN
STAINLESS STEEL, THREADED END CONNECTIONS
0.014 SLOT

3" BASE PLUG

3/8" PRONGS WELDED TO PLUG TO CENTER SCREEN

VERTICAL SCALE 1" = 2'

HORIZONTAL SCALE 1" = 16"

Compiled by *L.H. Whitaker*

HEARTS HILL Retrofit
September 11, 2000
wt - 7.980 m @ 09:45
8.600 m
-0.626 m
7.974 m @ 09:52

Casing Tally
3 inch casing
- casing #3 From bottom of bushing
to bottom of coupling - 0.008 m
- Top of coupling - 0.13 m
- casing #2 - 5.870 m
- casing #1 - 5.86 m
2 inch casing

Casing #1	6.04 m
#2	6.036 m
#3	6.03 m
#4	6.038 m
#5	6.036 m
#6	5.932 m
#7	5.94 m
#8	5.933 m
#9	5.938 m

Heart's Hill September 18, 2000

- grout from top of steel casing 12.35 m 8.504 m
- casing #3 From bottom of bushing to bottom of coupling - 0.008 m 9.400 m 555 m stick-up
- Top of coupling - 0.13 m 0.896 m 7.949 m
- casing #2 - 5.870 m 8.504 m @ 11:29
- casing #1 - 5.86 m

TD - 76.57 m inside casing
- Cut off 0.405 m off the casing
- new casing length 76.165 m Stick up above old steel casing is 0.150 TOC 3" SCH 80PVC
- Added one gallon of bleach to well and circulated
- Start pumping @ 12:16
- Pumping rate 20 l / 20 sec - Shut pump off @ 13:30
wt - 8.360 m
-0.150 m Stick up of 3" SCH 80 PVC casing above steel casing
8.210 m @ 16:58

Supervised by: E.J. Jaworski, M.A. Simpson
Drilling Contractor: Elk Point Drilling
Greg Sander, Greg Metrunc

Screen Assembly
From bottom sandpoint to:
- Bottom of screen slots - 0.106
- Top of screen slots - 0.996
- Bottom of bushing - 1.052
- Bottom of pipe - 1.061
- Top of pipe - 3.240
- Problems in washing out well, probably screen destroyed
- 10 bags of frac sand
- top of gravel pack - 72.814 m below top of steel casing
- Top of bentonite seal - 71.94 m
- 11 bags of grout