

72E/15 SRC 1966

Acq 450

GARDEN HEAD

SW13-21-9-19-W3

OBSERVATION WELL

ELK POINT DRILLING LTD.

EDMONTON, ALBERTA

DRILLERS

PETER MAIK

JOHN SOLOINIKO

SURFACE ELEV. 2950 FT

ELEV. FROM TOP MAP 25' CI

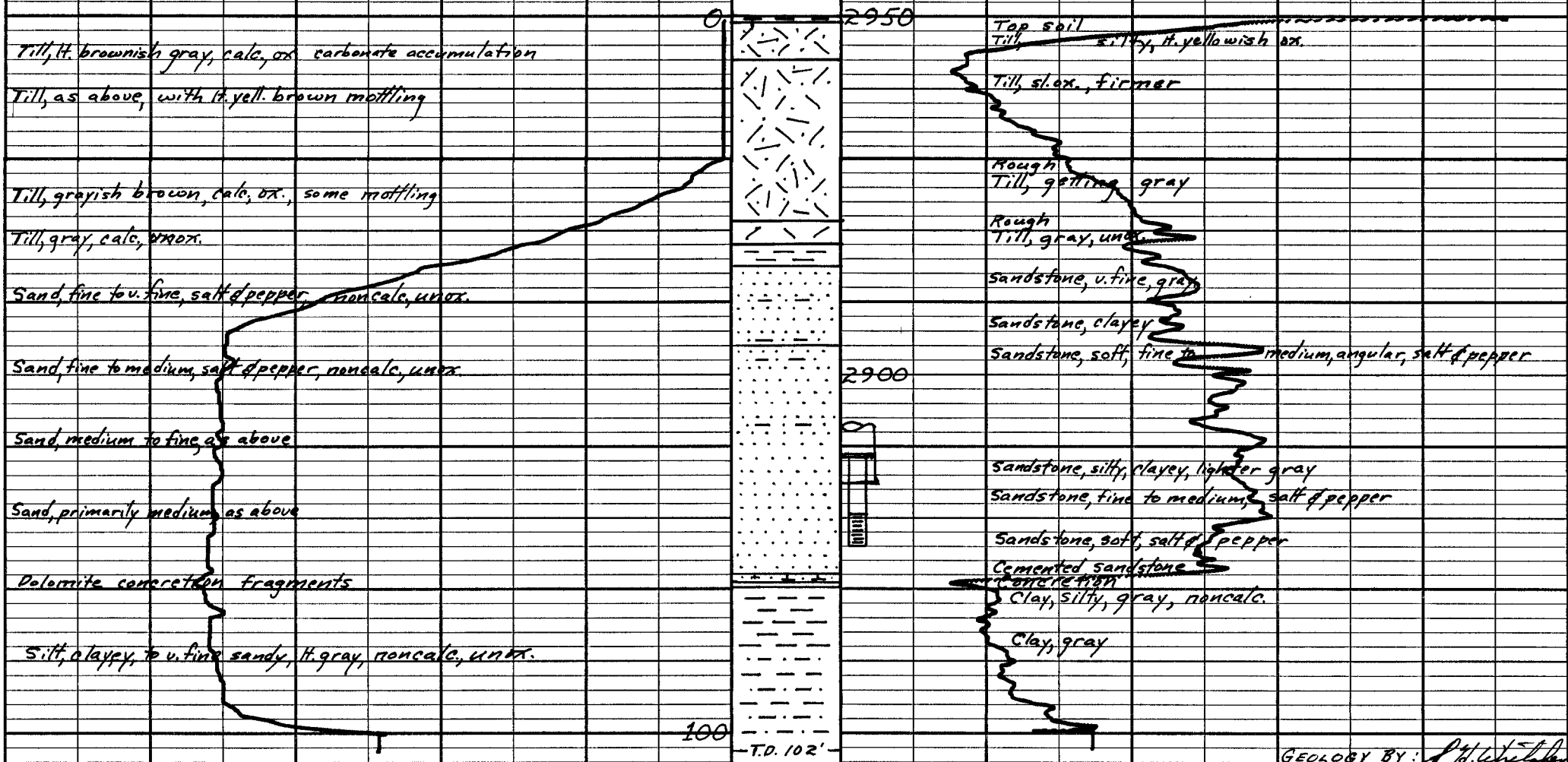
SP COND MUD 1100 MMHOS/CM

SP COND WATER 1050 MMHOS/CM

CUTTING DESCRIPTIONS

DRILLER'S LOG

SP 10 MV R 10 OHMS



GEOLOGY BY: P.H. White  
1 NOVEMBER 1966

QTR	LSD	SEC	TWP	RGE	MER	Day	Mon	Year
SW	13	21	- 09	- 19	- W 3	01	07	66

Line No.	From (ft)	To (ft)	Driller's Log and Report Form
	0	29	TILL - OXIDIZED
	29	32	TILL - UNOXIDIZED
	32	35	CLAY
	35	79	SANDSTONE - NONCALCAREOUS
	79	102	CLAY - NONCALCAREOUS
WELL DESCRIPTION			
	STEEL	CASING	DIA 6 5/8" - LENGTH 65.4' - BOTTOM @ 64.8'
	STEEL	RISER	DIA 3" - LENGTH 7.95' - BOTTOM @ 70' T.O.C.
	S.S.	SCREEN	DIA 4" TELE. - LENGTH 4.2' - SLOT.010"
WELL BOTTOM - 74.4' T.O.C.			
WATER LEVEL - 22.1'			
DRAWDOWN ---- AFTER 16 HRS @ 10-12 IGPM			
RECOMMENDED -----			

Contractor : ELK POINT DRILLING LTD.  
Driller's Log By :