

62E/10 SRC 1967
 FORGET
 SW12-2-9-7-W2
 TESTHOLE
 ELK POINT DRILLING LTD.
 EDMONTON, ALBERTA
 DRILLERS
 PETER MAIK
 JOHN SOLOINIKO

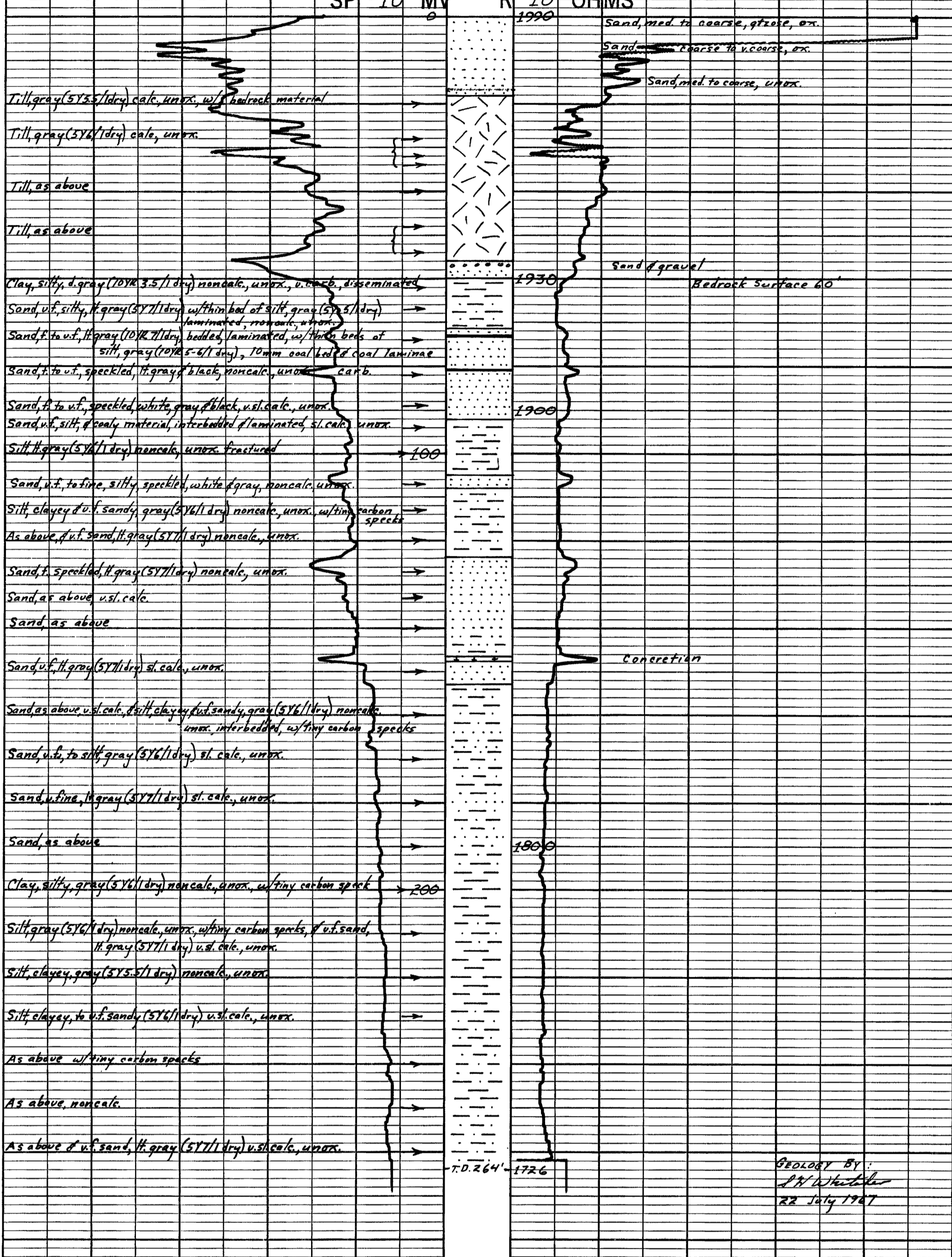
SURFACE ELEV. 1990 FT
 ELEV. FROM TOP MAP 25' CI

SP COND MUD 1300 MMHOS/CM
 SP COND WATER 900 MMHOS/CM

SIDEHOLE CORE DESCRIPTIONS

DRILLER'S LOG OF CUTTING DESCRIPTIONS

SP 10 MV R 10 OHMS
 1990



Geology By:
 J.H. Whistler
 22 July 1967

QTR	LSD	SEC	TWP	RGE	MER	Day	Mon	Year
SW	12	02	- 09	- 07	-W 2	01	07	67

Line No.	From (ft)	To (ft)	Driller's Log and Report Form
	0	08	SAND - OXIDIZED
	08	18	SAND - UNOXIDIZED
	18	58	TILL - UNOXIDIZED
	58	60	SAND & GRAVEL
	60	72	CLAY - UNOXIDIZED
	72	92	SAND - UNOXIDIZED
	92	105	SILT - UNOXIDIZED
	105	108	SAND
	108	124	SILT - UNOXIDIZED
	124	153	SAND - NONCALCAREOUS
	153	264	CLAY - SILTY - UNOXIDIZED
WELL DESCRIPTION			
STEEL	CASING	DIA 6 5/8" - LENGTH 15.2' - BOTTOM @ 14.5'	
S.S.	SCREEN	DIA 4" TELE. - LENGTH 5' - SLOT .010"	
WELL BOTTOM - 19.5'			
WATER LEVEL - 9'			
DRAWDOWN 4' AFTER 1 HR @ 12 IGPM			
RECOMMENDED -----			

Contractor : ELK POINT DRILLING LTD.
 Driller's Log By :