

CONQUEST NO.500

720/11 SSRIP 1971

CONQUEST NO.54

SW13-14-30-9-W3

TESTHOLE

ELK POINT DRILLING LTD.

EDMONTON, ALTA.

NORTH BATTLEFORD, SASK.

DRILLERS: PETER MAIK

JOHN SOLONINKO

SURFACE ELEV. 1818 FT.

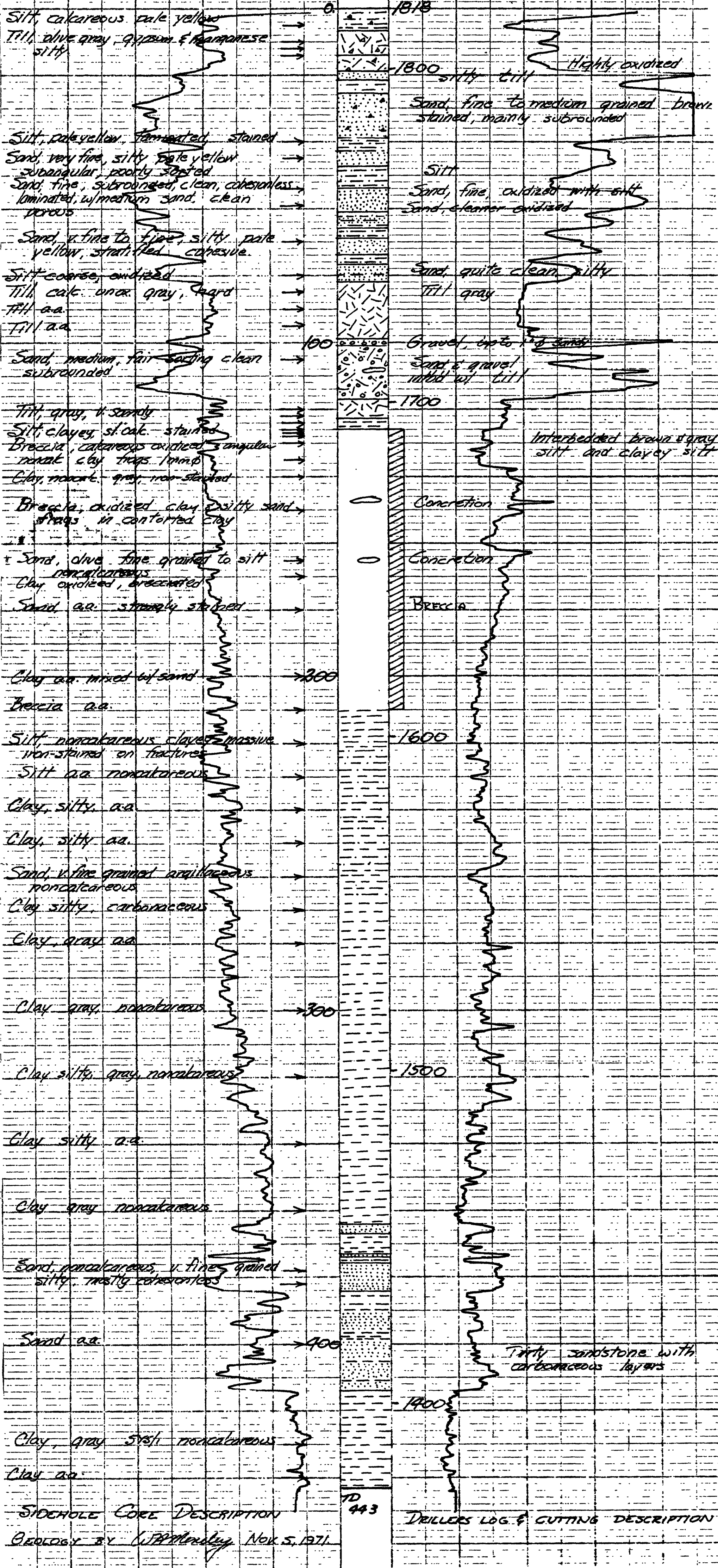
FROM: Top Map 1 ft. Ct.

MUD 900

CONDUCTIVITY: UMHS/GM WATER 700

WELL R 10 OHMS

SP 10 MV



STOCHOLE CORE DESCRIPTION
 GEORGE BY W.P. Mendenhall Nov. 5, 1971

DRILLERS LOG & CUTTINGS DESCRIPTION

QTR	LSD	SEC	TWP	RGE	MER	Day	Mon	Year
SW	13	14	- 30	- 09	- W 3	05	11	71

Line No.	From (ft)	To (ft)	Driller's Log and Report Form
0	07		SILT - CALCAREOUS
07	18		TILL -
18	22		SAND
22	26		TILL - SILTY
26	82		SAND - SILTY
82	99		TILL - GREY
99	101		GRAVEL
101	117		TILL - SAND & GRAVEL STREAKS
117	123		TILL - GREY
123	126		CLAY
126	210		SHALE
210	364		CLAY - SILTY
364	367		SAND
367	373		CLAY
373	414		SAND - CLAY STREAKS
414	443		CLAY - GREY - CALCAREOUS
			WELL DESCRIPTION
STEEL	CASING	DIA 7" O.D. - LENGTH 54' - BOTTOM @ 53'	
STEEL	RISER	DIA 6" O.D. - LENGTH 5' - BOTTOM @ 56.5'	
S.S.	SCREEN	DIA 6" TELE. - LENGTH 5' - SLOT .007"	
			WELL BOTTOM - 62.85'
			WATER LEVEL - 53.95' T.O.C.
			DRAWDOWN _____
			RECOMMENDED _____
Contractor :			ELK POINT DRILLING CORP.
Driller's Log By :			