

Aug 13/72

73B/1 SRC 1972

BLUCHER

SW4-27-35-2-W3

TESTHOLE

ELK POINT DRILLING LTD

EDMONTON, ALTA.

NORTH BATTLEFORD, SASK.

DRILLERS: PETER MAIK
JOHN SOLONINKO

SURFACE ELEV. 1704.8 FT.

FROM: SURVEY

MUD 1200

WATER 700

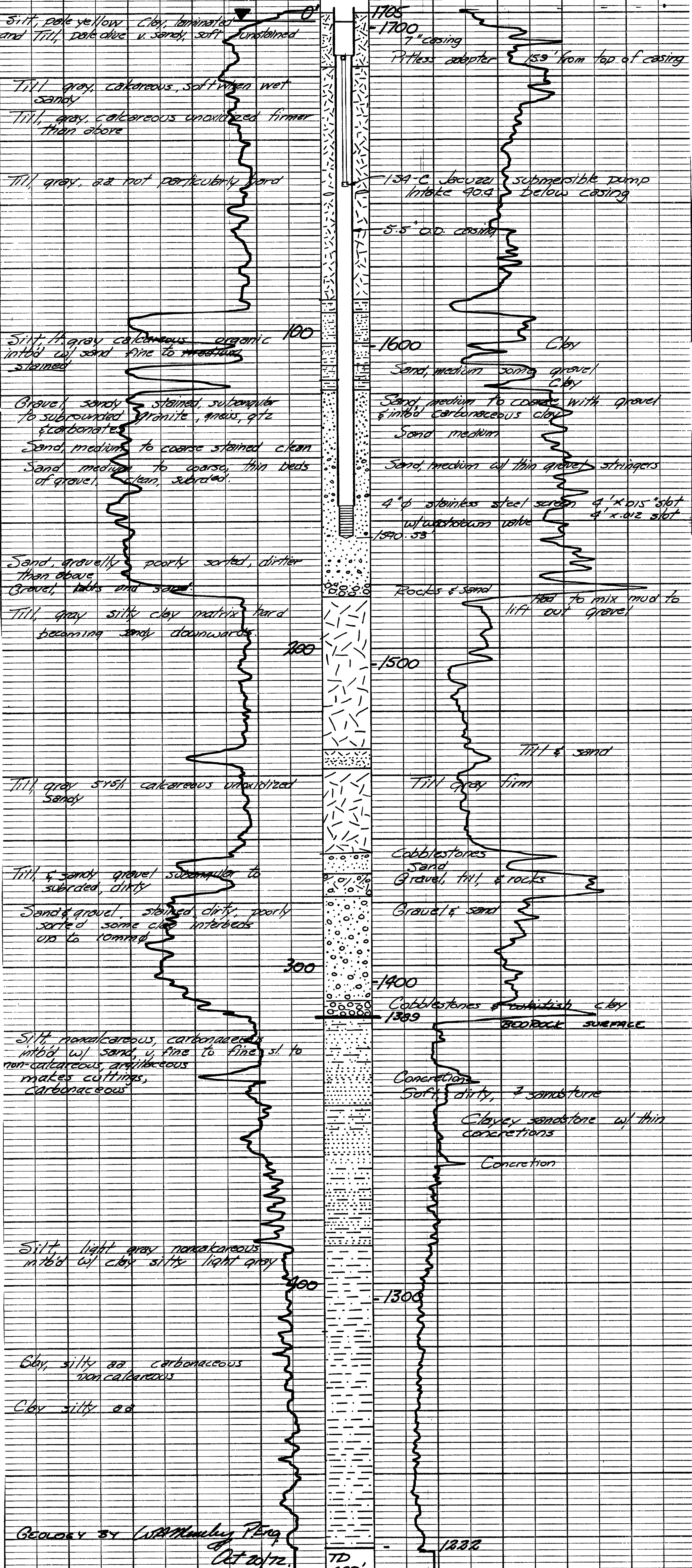
WELL R/10 OHMS

NOTE: TESTHOLE DRILLED
IN 20' N. OF
PRODUCTION WELL
NO. 4

CONDUCTIVITY:
UMHOS/CM

SP/10 MV

DESCRIPTION OF CUTTING SAMPLES



Geology by Lisa Muehleberg Ph.D. Oct 20/72.