

Appendix E: Simulated Drawdown for Various Transient Scenarios

Appendix E

Simulated drawdown for various pumping scenarios

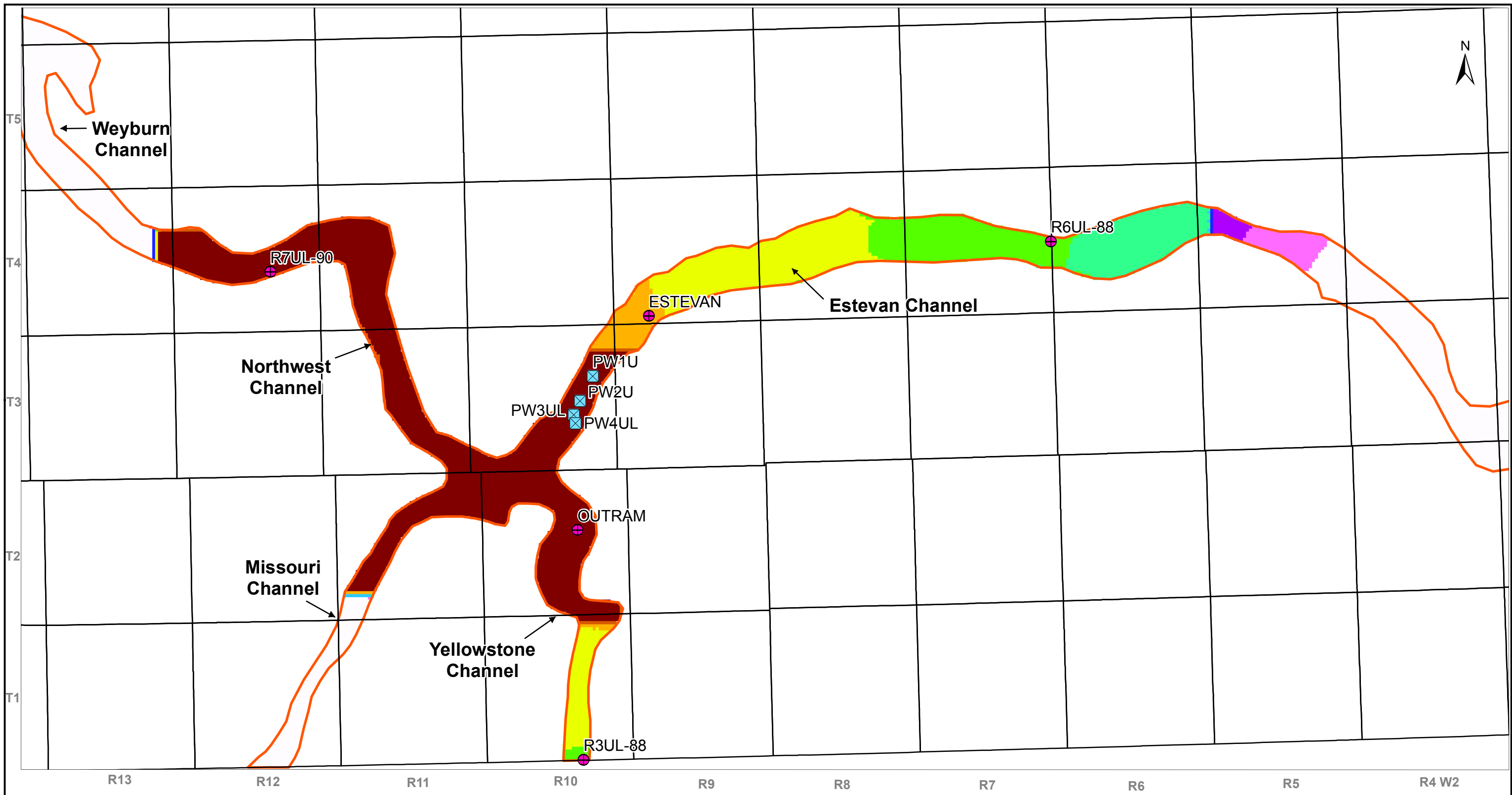
Figure E.1: Distribution of steady-state drawdown at pumping rate of 1,800 dam³/year

Figure E.2: Distribution of drawdown after 20 years of pumping at rate of 3,800 dam³/year

Figure E.3: Distribution of drawdown after 10 years of pumping at rate of 4,800 dam³/year

Figure E.4: Distribution of drawdown after 5 years of pumping at rate of 6,200 dam³/year

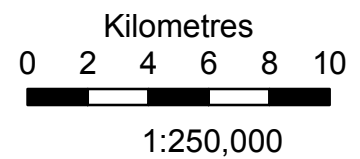
Figure E.5: Distribution of drawdown after 1 year of pumping at rate of 10,800 dam³/year



Date Saved: 17/03/2017 11:44:53 AM User Name: amel

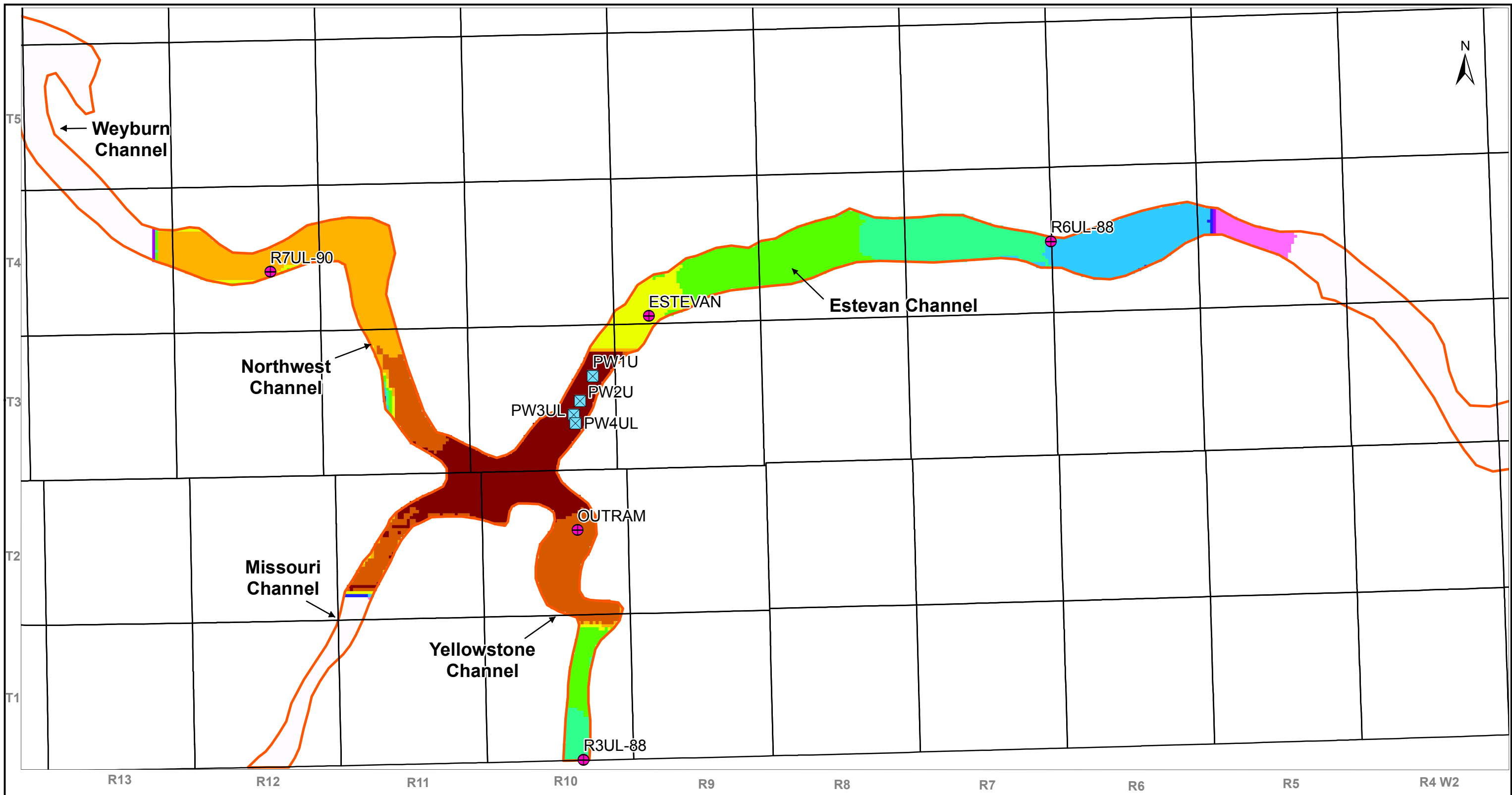
Legend

Wells	Drawdowns (m)	25 - 30
Pumping	0 - 5	30 - 35
Observation	5 - 10	35 - 40
	10 - 15	40 - 45
	15 - 20	45 - 50
	20 - 25	50 - 55



Estevan Valley Aquifer
Groundwater Model and Database

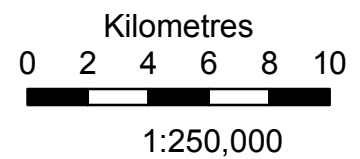
Figure E.1:
**Distribution of steady-state drawdown
at pumping rate of 1,800 dam³/year**



Date Saved: 20/03/2017 9:52:38 AM User Name: amel

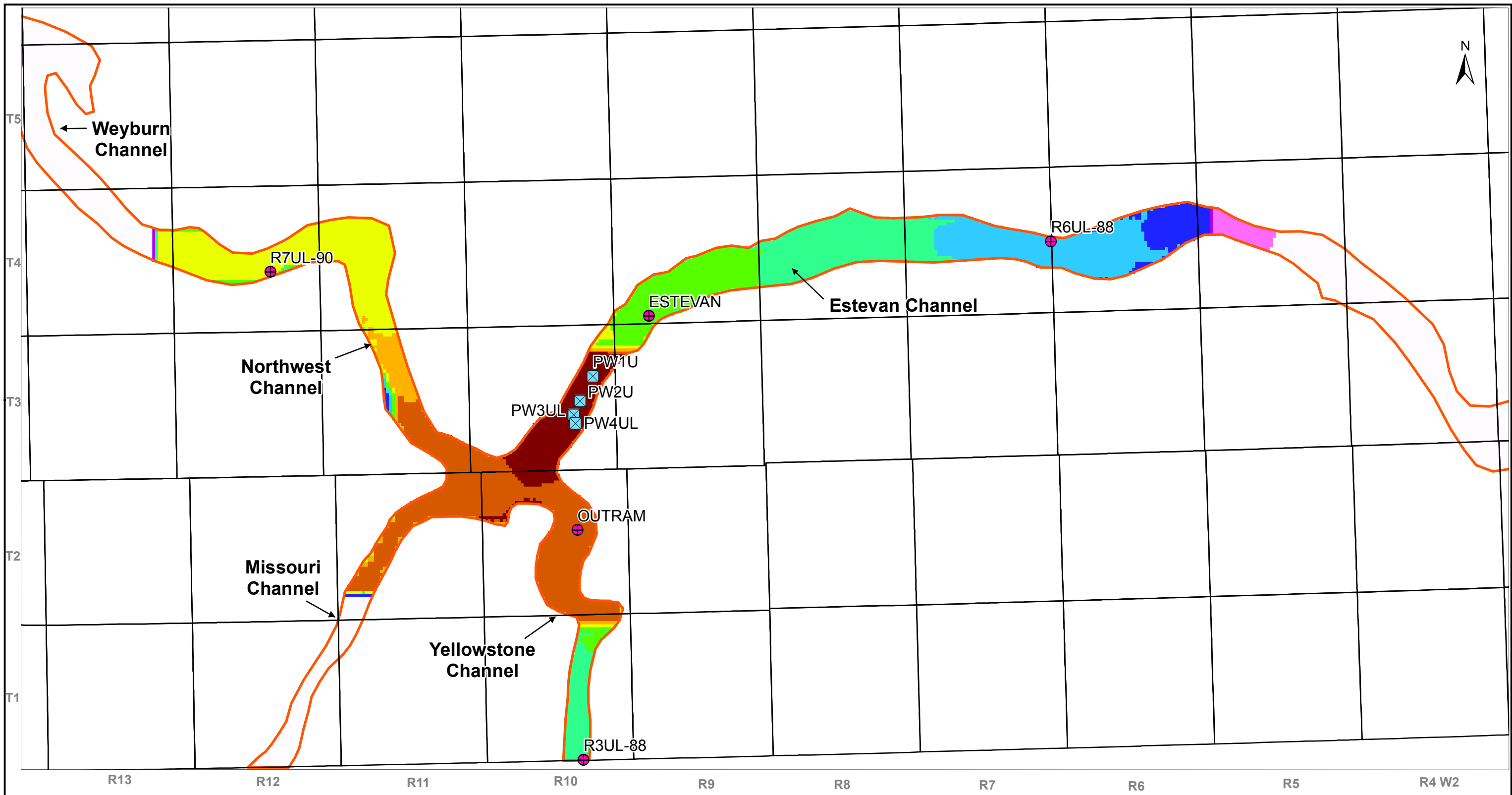
Legend

Wells		Drawdowns (m)
⊠ Pumping	□ 0 - 5	■ 25 - 30
⊕ Observation	■ 5 - 10	■ 30 - 35
	■ 10 - 15	■ 35 - 40
	■ 15 - 20	■ 40 - 45
	■ 20 - 25	■ 45 - 50
		■ 50 - 55



Estevan Valley Aquifer
Groundwater Model and Database

Figure E.2:
**Distribution of drawdown after 20 years
of pumping at rate of 3,800 dam³/year**



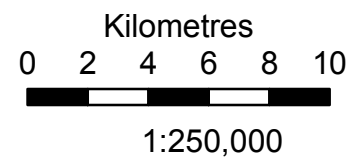
Legend

Wells

- ⊠ Pumping
- ⊕ Observation

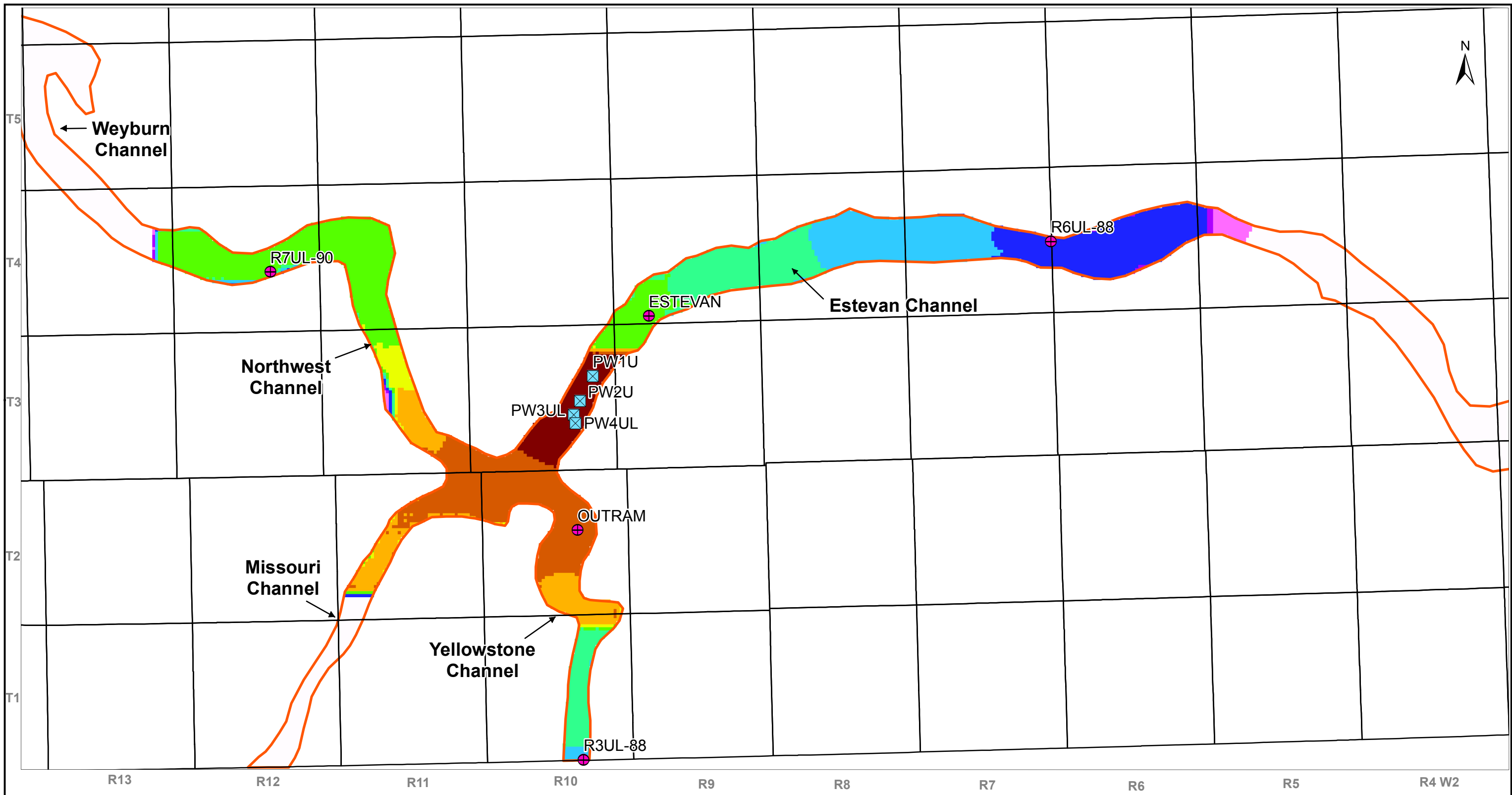
Drawdowns (m)

- | | |
|---------|---------|
| 0 - 5 | 25 - 30 |
| 5 - 10 | 30 - 35 |
| 10 - 15 | 35 - 40 |
| 15 - 20 | 40 - 45 |
| 20 - 25 | 45 - 50 |
| | 50 - 55 |



Estevan Valley Aquifer
Groundwater Model and Database

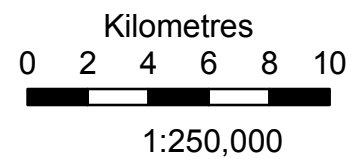
Figure E.3:
Distribution of drawdown after 10 years
of pumping at rate of 4,800 dam³/year



Date Saved: 20/03/2017 9:56:13 AM User Name: amel

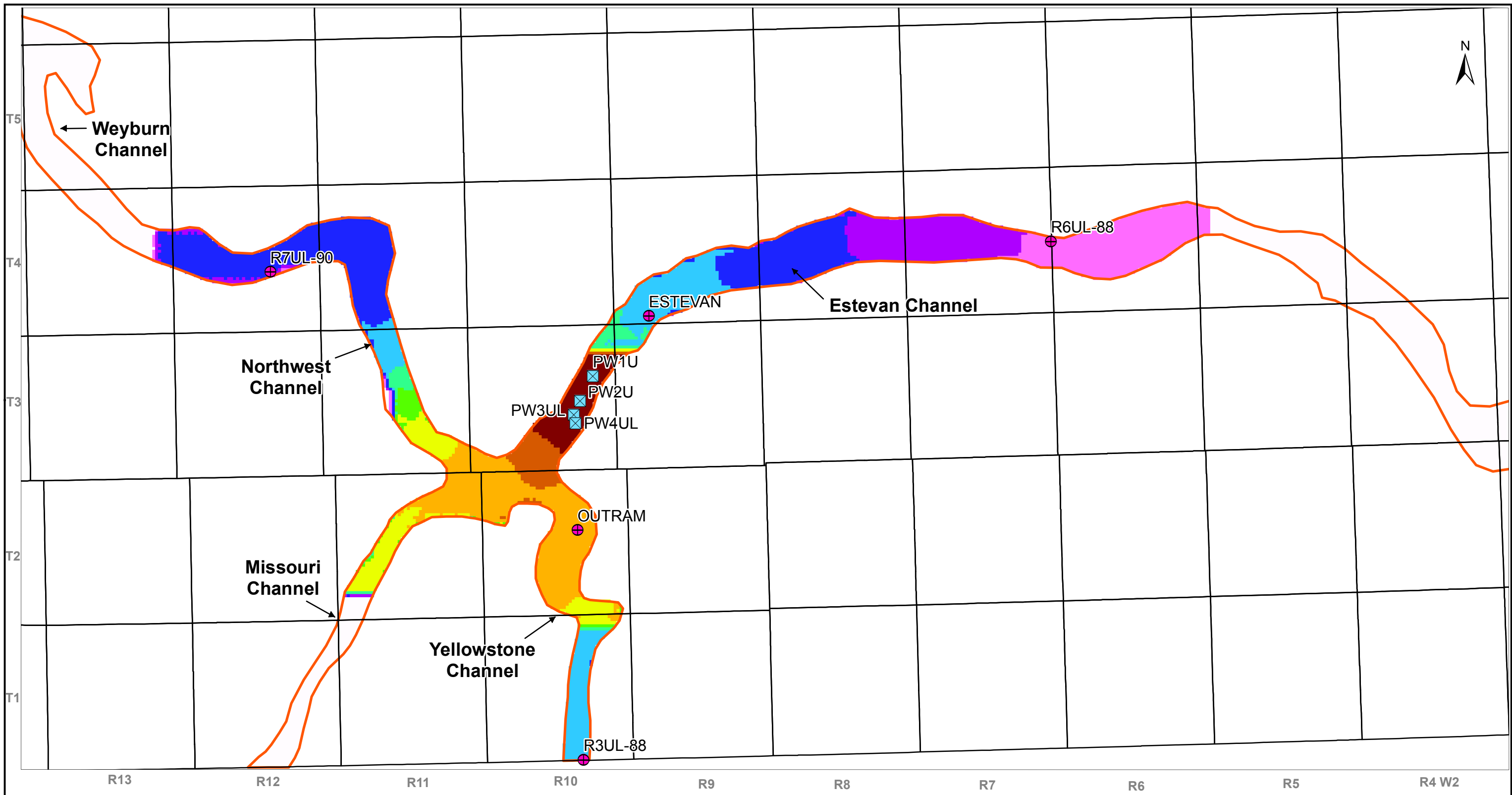
Legend

Wells		Drawdowns (m)
⊠	Pumping	0 - 5
⊕	Observation	5 - 10
		10 - 15
		15 - 20
		20 - 25
		25 - 30
		30 - 35
		35 - 40
		40 - 45
		45 - 50
		50 - 55



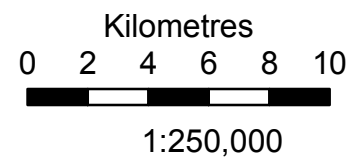
Estevan Valley Aquifer
Groundwater Model and Database

Figure E.4:
Distribution of drawdown after 5 years
of pumping at rate of 6,200 dam³/year



Date Saved: 20/03/2017 9:57:26 AM User Name: amel

Legend	
Wells	Drawdowns (m)
⊠ Pumping	0 - 5
⊕ Observation	5 - 10
	10 - 15
	15 - 20
	20 - 25
	25 - 30
	30 - 35
	35 - 40
	40 - 45
	45 - 50
	50 - 55



Estevan Valley Aquifer
Groundwater Model and Database

Figure E.5:
**Distribution of drawdown after 1 year
of pumping at rate of 10,800 dam³/year**