

Appendix C: Sensitivity Analysis

Appendix C

Sensitivity analysis

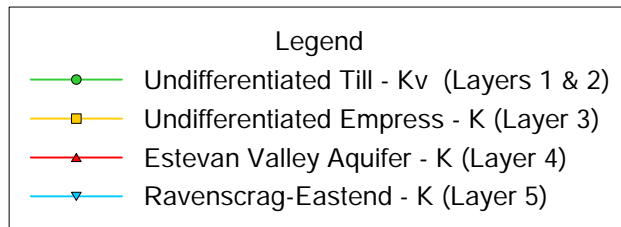
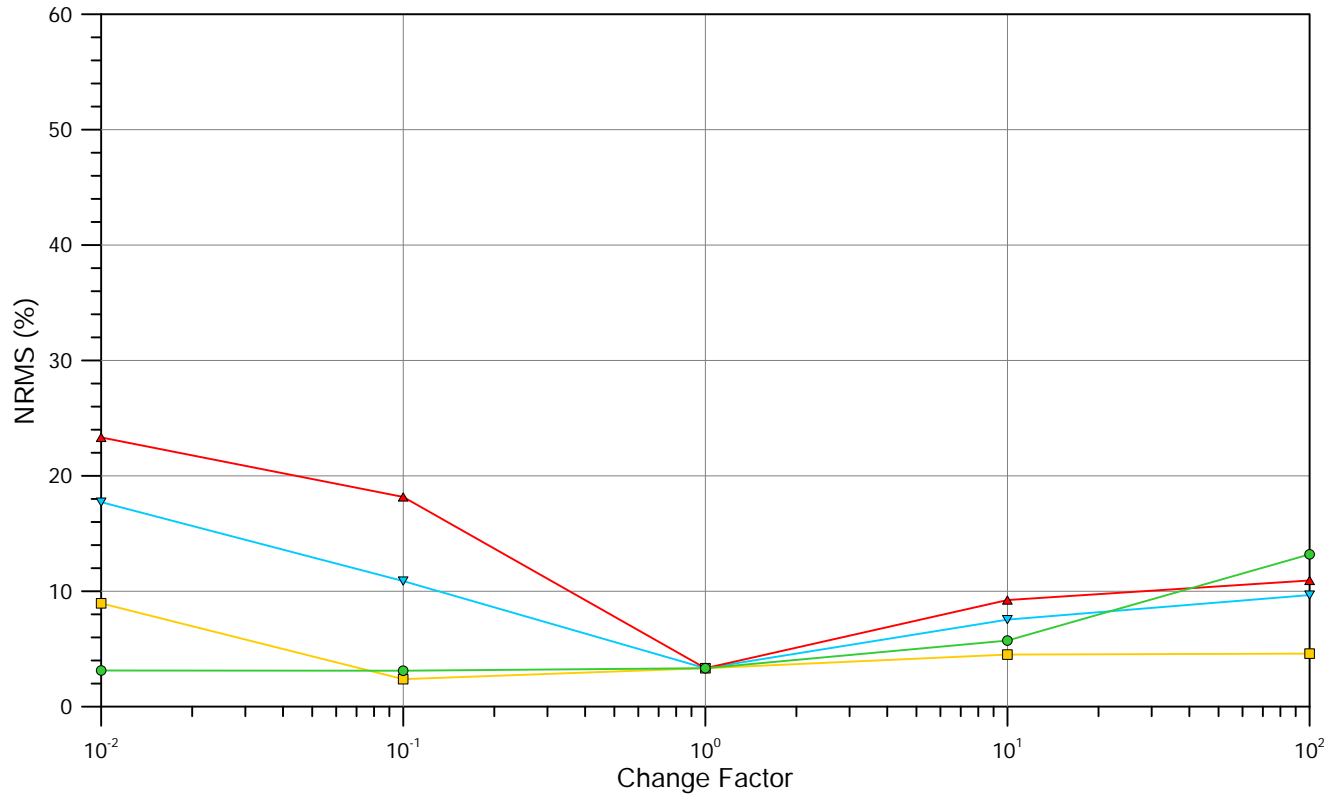
Figure C.1: Results of sensitivity analysis of the steady-state model

Figure C.2: Results of sensitivity analysis of the transient-state model (average of all time steps)

Figure C.3: Results of transient sensitivity analysis for till aquitard (Layers 1+2)

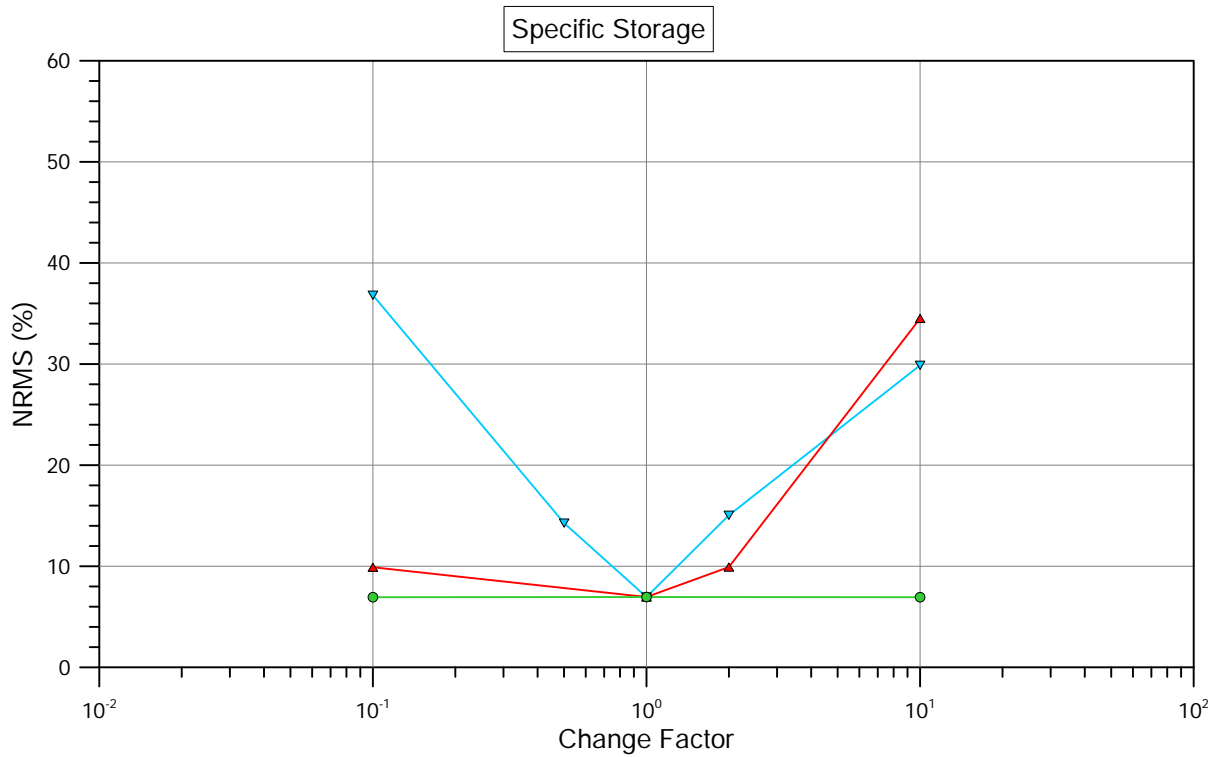
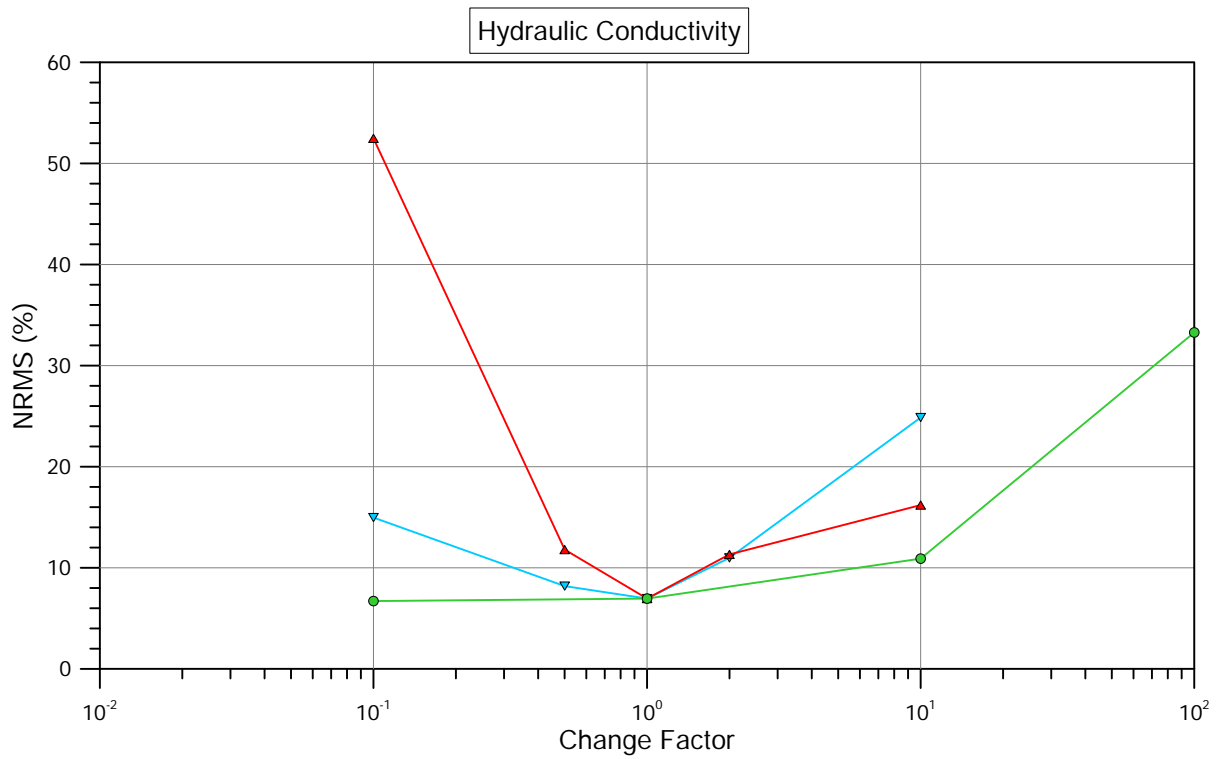
Figure C.4: Results of transient sensitivity analysis for Empress Group aquifer (Layers 3+4)

Figure C.5: Results of transient sensitivity analysis for Ravenscrag-Eastend aquifer (Layer 5)



BASE CASE	Layers 1 & 2	Layer 3	Layer 4	Layer 5
K_h (m/s)	5×10^{-6}	5×10^{-4}	1×10^{-3}	$5 \times 10^{-7} - 5 \times 10^{-8}$
K_v (m/s)	3×10^{-12}	1×10^{-5}	1×10^{-4}	$1 \times 10^{-9} - 8 \times 10^{-10}$

Figure C.1: Results of sensitivity analysis of the steady-state model



BASE CASE	Layers 1 & 2	Layer 3	Layer 4	Layer 5	Legend
K_h (m/s)	5×10^{-6}	5×10^{-4}	1×10^{-3}	$5 \times 10^{-7} - 5 \times 10^{-8}$	● Undifferentiated Till (Layers 1 & 2)
K_v (m/s)	3×10^{-12}	1×10^{-5}	1×10^{-4}	$1 \times 10^{-9} - 8 \times 10^{-10}$	▲ Empress Group (Layers 3 & 4)
S_s (m ⁻¹)	1×10^{-5}	1×10^{-5}	1×10^{-5}	4×10^{-5}	▼ Ravenscrag-Eastend (Layer 5)

Figure C.2: Results of sensitivity analysis of the transient-state model (average of all time steps)

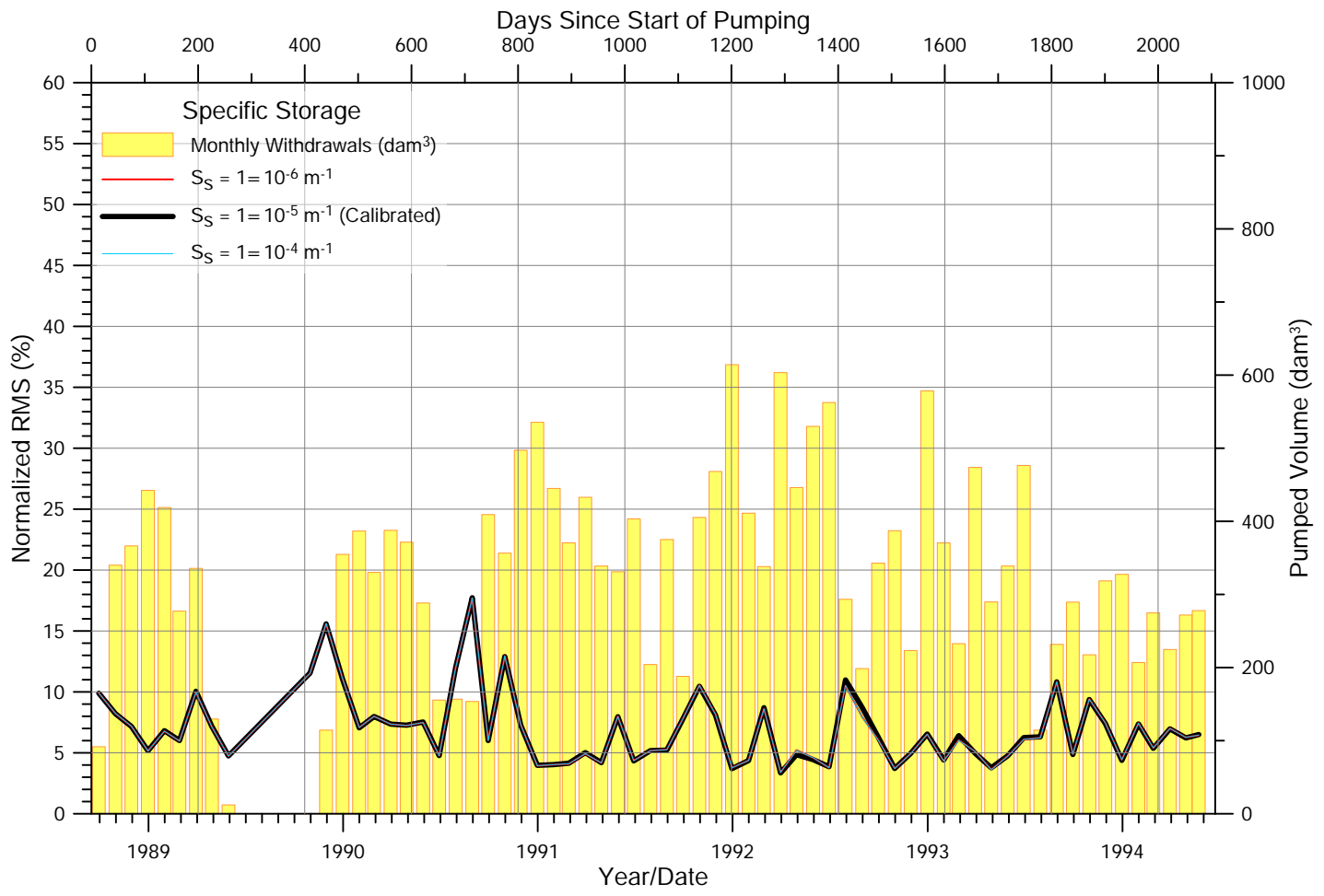
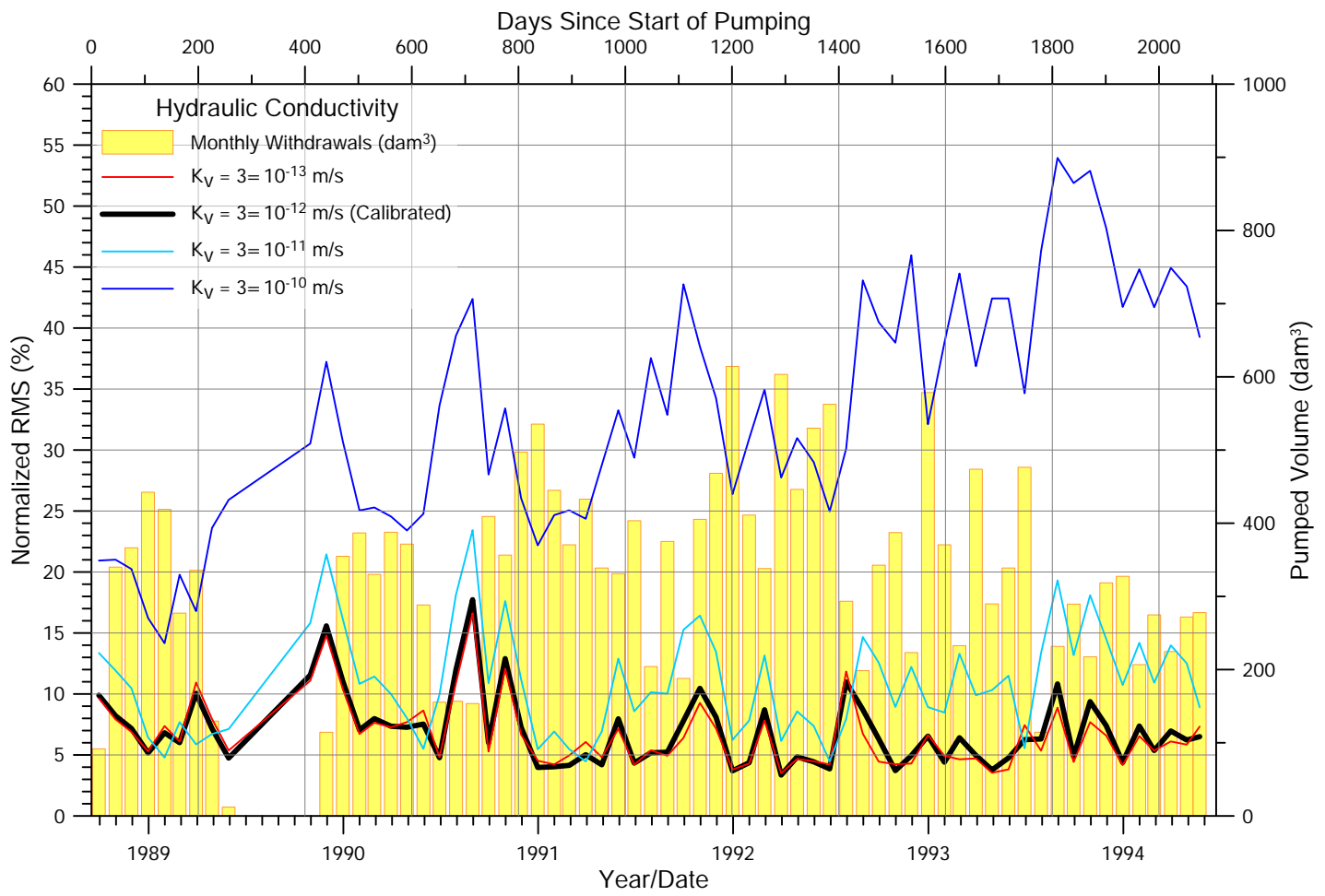


Figure C.3: Results of transient sensitivity analysis for till aquitard (Layers 1+2)

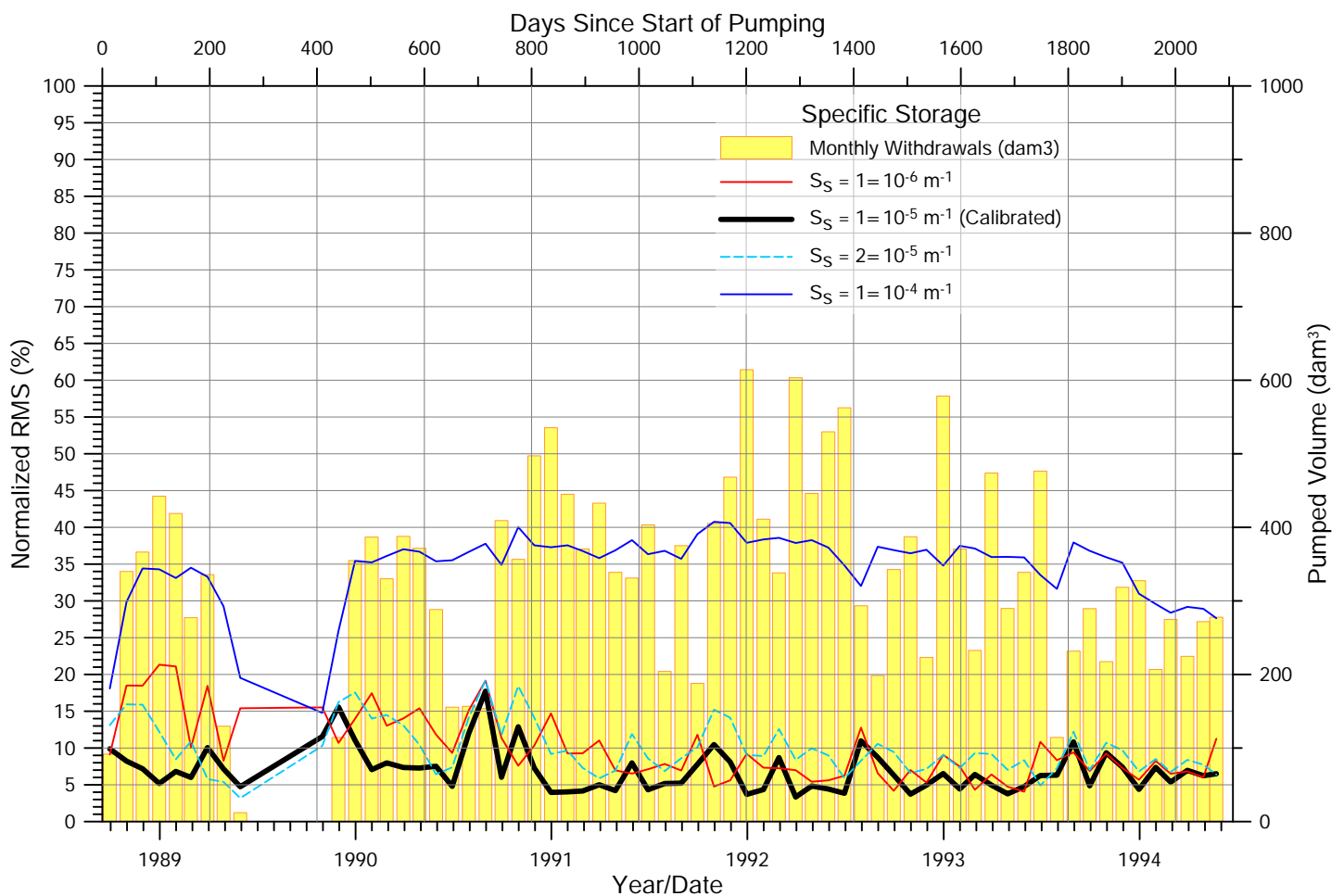
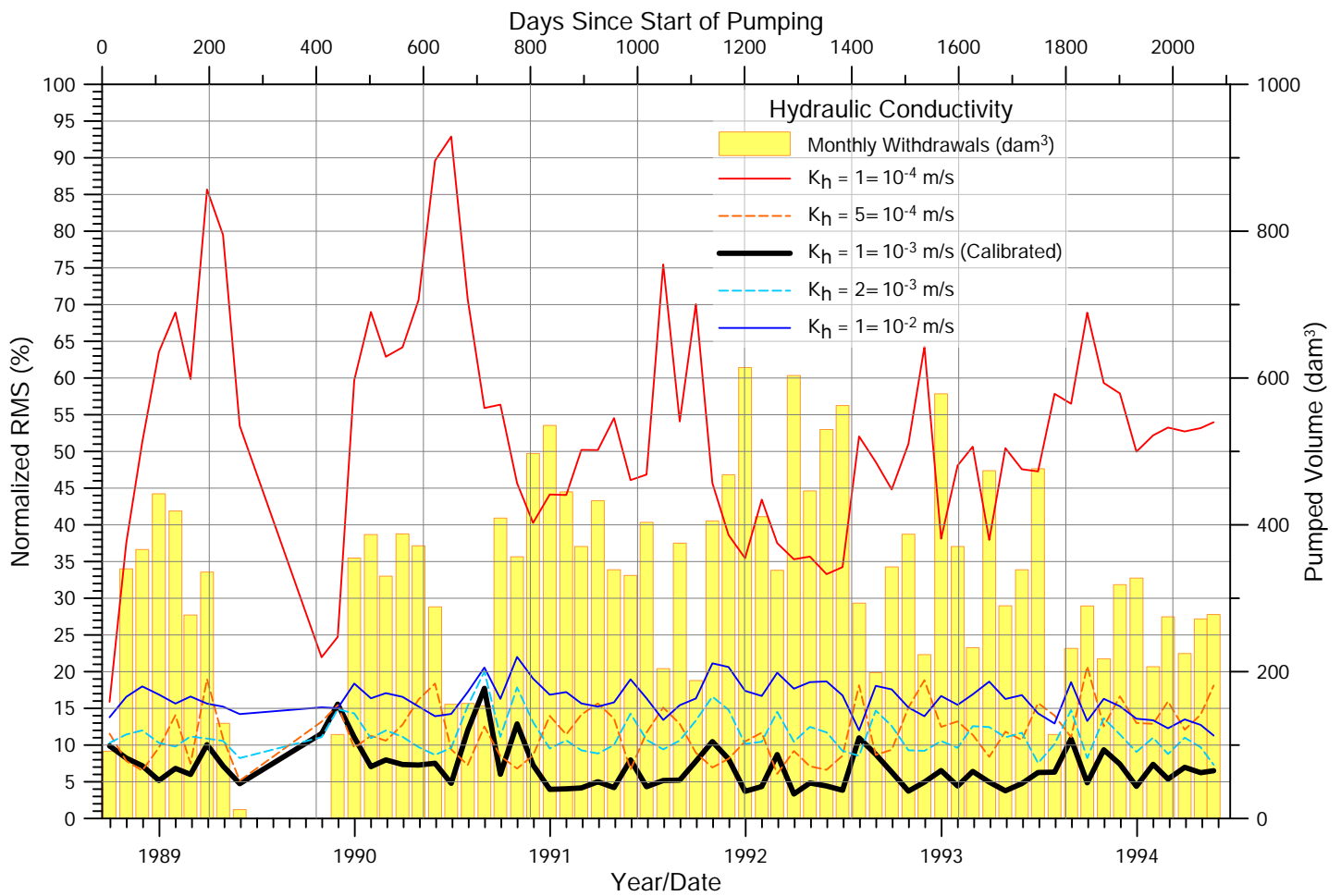


Figure C.4: Results of transient sensitivity analysis for Empress Group aquifer (Layers 3+4)

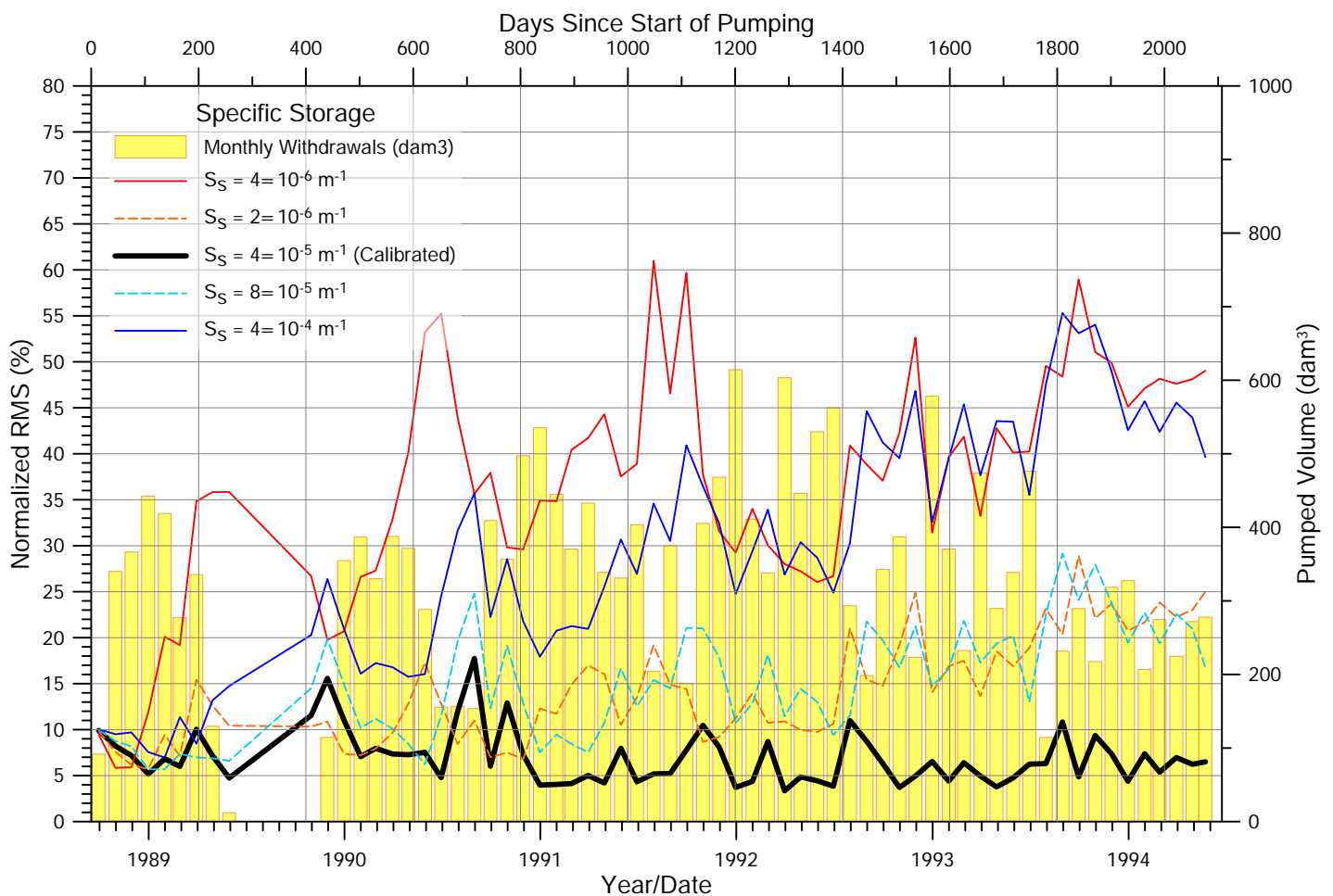
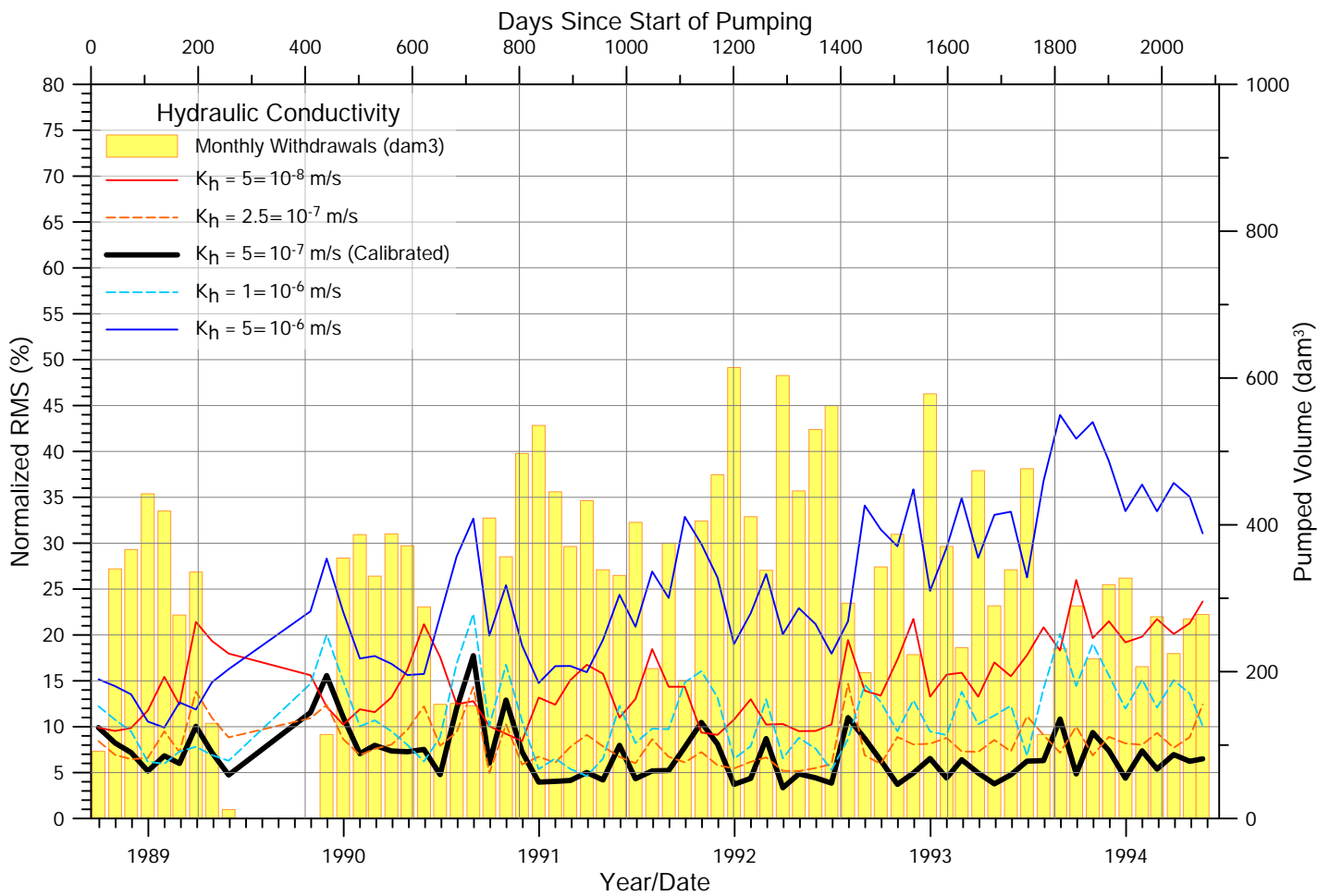


Figure C.5: Results of transient sensitivity analysis for Ravenscrag-Eastend aquifer (Layers 5)