

AGRIUM 43

73B/3 COMINCO 1968

TESTHOLE NO. 22

NE16-20-35-8-W3

N.10550 E.99880

ELK POINT DRILLING LTD.

EDMONTON, ALBERTA

PETER MAIK

DRILLERS: JOHN SOLONINKO

JOHN GURAL

SURFACE ELEV. 1670 FT.

ELEV. FROM TOP. MAR 2' C.I.

SP. COND.: MUD 420 MMHOS/CM @ 25°C

SP. COND.: WATER 180 MMHOS/CM @ 25°C

SP 5 MV R 25 OHMS

DEPTH ELEVATION

Silt, light yellow brown, oxidized

Silt gray in clayey & interbedded gray clay laminated

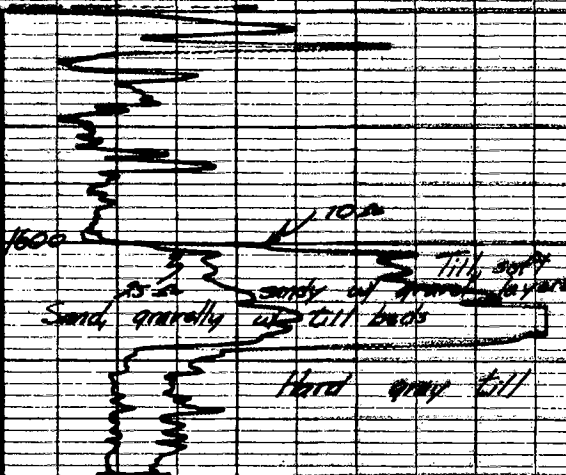
Till, sandy gray (5% clay) soft

Sand, coarse to x. pebbles pebbly subrounded in subangular w/ inlets of till or silt

Till, calc unox gray (3% clay)

BASED ON GEOLOGISTS DESCRIPTION OF ROTARY DRILL CUTTINGS.

GEOLOGY BY S.N. WHITNER
 COMPILATION BY *William Perry*
 Oct. 4, 1968.



BASED ON DRILLERS LOG.

TOTAL DEPTH

DRILLED 82

C-LOGGED 82

CEMENT MANDRELMENT PLUS SET
 TO 60' W/ 12 SCS CEMENT +
 4% BENTONITE.