

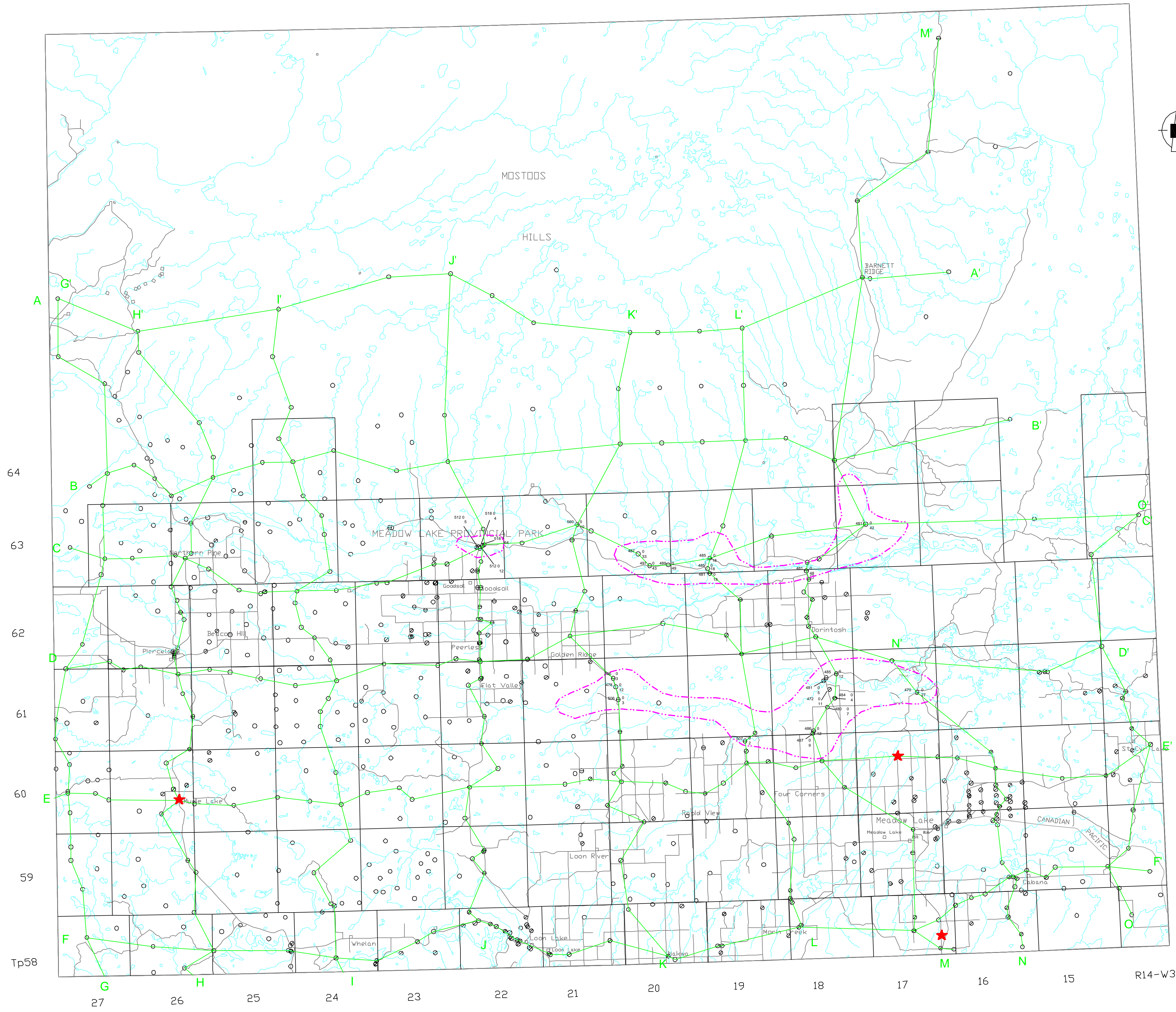
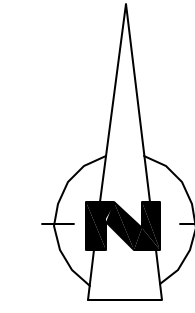


Saskatchewan Research Council  
Resources/Environment Group  
Environment Branch

Saskatchewan Water Corporation  
Basin Operations  
Water Resource Management

Geology and Groundwater Resources  
of the Waterhen Area (73K)

Map 5  
Surficial Sand Aquifers



LEGEND

F — F' Cross Section

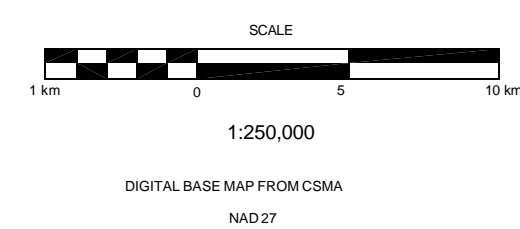
- E-log only
- ⊙ E-log, geologist description
- ⊗ E-log, driller's log
- ★ Flowing well/testhole

Surface elevation  
Depth to water

Depth to top  
Thickness

(values are in metres)

These maps are accompanied by a series of cross sections which depict the subsurface units along the transects shown on the map. The maps and cross sections are representations of the data taken from the testholes and wells indicated on the maps. The boundaries outline areas in which the aquifer or geologic unit is likely to be found. Aquifers and other geologic units may not always occur continuously within the areas shown, may not be found at a specific site or may occur at elevations other than those indicated. Discontinuous water bearing zones may be found outside the boundaries shown.



This document may not be copied without the consent of the authors. However, copies may be made, except for resale, for personal or internal use of the client, provided the original publication is cited where applicable.

Preliminary Map July 1997  
Prepared by Saskatchewan Research Council  
Jointly funded by Saskatchewan Research Council and Saskatchewan Water Corporation.

Accompanies SRC Publication R-1510-6-E-97  
ACAD Drawing No.: waterhen.dwg