



Saskatchewan Research Council
Resources/Environment Group
Environment Branch

Saskatchewan Water Corporation
Basin Operations
Water Resource Management

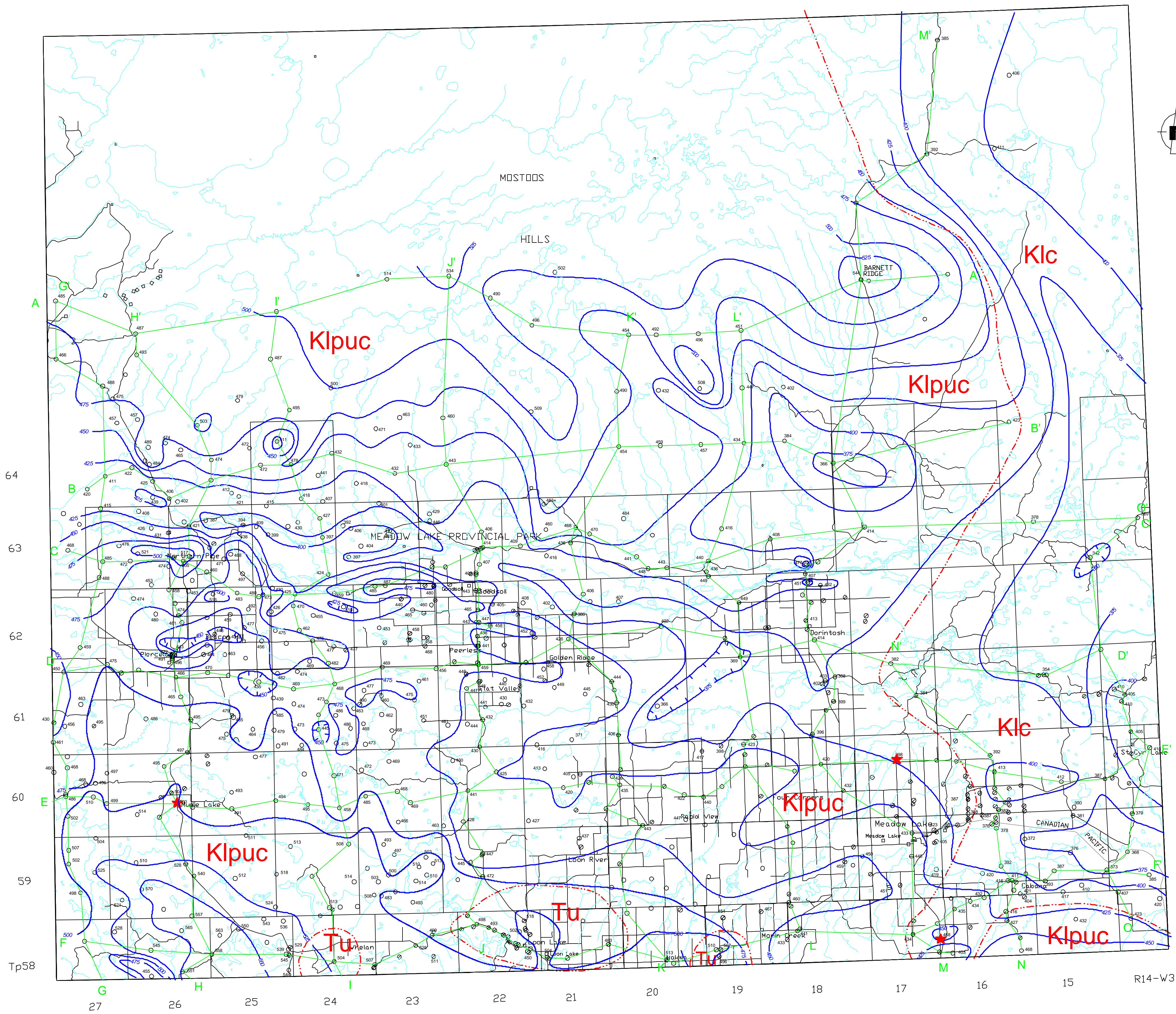
Geology and Groundwater Resources of the Waterhen Area (73K)

Map 2 Bedrock Surface Geology and Topography

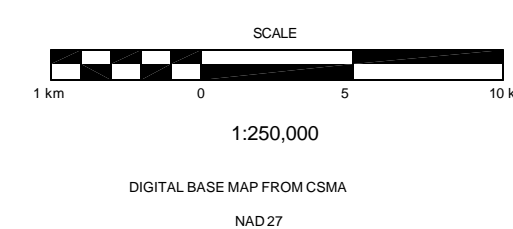
- Tu - Tertiary Undifferentiated, yellow brown, and light grey silt with fine-medium grained sand at base.
- Kipuc - Lea Park and Upper Colorado, grey silt and clay, upper part is noncalcareous, lower part includes First and Second White Speckled Shale.
- Klc - Lower Colorado, gray, noncalcareous clayey silt and silty clay.

LEGEND

- F — F' Cross Section
- E-log only
- ⊕ E-log, geologist description
- ⊙ E-log, driller's log
- ★ Flowing well/testhole
- ⊙ 420 Bedrock surface elevation (MASL)
- 400 Bedrock surface contour (CI=25 m)
- - - Geological Contact (inferred)



These maps are accompanied by a series of cross sections which depict the subsurface units along the transects shown on the map. The maps and cross sections are representations of the data taken from the testholes and wells indicated on the maps. The boundaries outline areas in which the aquifer or geologic unit is likely to be found. Aquifers and other geologic units may not always occur continuously within the areas shown, may not be found at a specific site or may occur at elevations other than those indicated. Discontinuous water bearing zones may be found outside the boundaries shown.



This document may not be copied without the consent of the authors. However, copies may be made, except for resale, for personal or internal use of the client, provided the original publication is cited where applicable.

Preliminary Map July 1997
Prepared by Saskatchewan Research Council
Jointly funded by Saskatchewan Research Council and Saskatchewan Water Corporation.

Accompanies SRC Publication R-1510-6-E-97
ACAD Drawing No.: waterhen.dwg