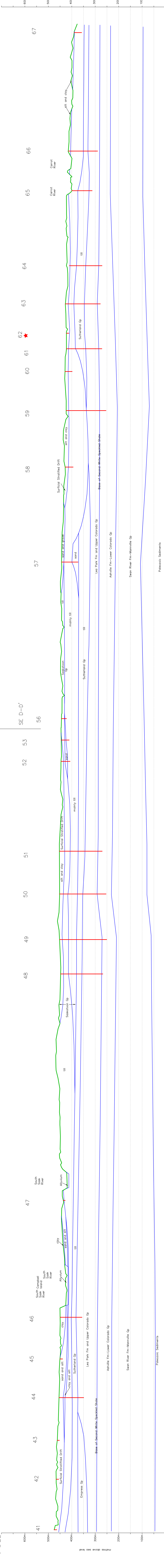


73H
SW D-D'



This document may not be copied, stored, or disseminated without the consent of the author. However, copies may be made, except for resale, where they are intended to be used in the classroom.

Copyright © 2008 Saskatchewan Geological Survey
 All rights reserved. No part of this publication may be reproduced, stored in a retrieval system, or transmitted, in any form or by any means, electronic, mechanical, photocopying, recording, or by any information storage or retrieval system, without the prior written permission of the Saskatchewan Geological Survey.

Project: 73H
 Date: 2008-08-20
 Author: J. G. ...
 Editor: ...
 Reviewer: ...
 Approved: ...



Prince Albert Area
 73H
 CROSS SECTION
 SW SE D-D'

Testhole or Well

Flowing well

Accompanies: 1990. Geology and
 Groundwater Resources of the Prince Albert
 Area (73H). Saskatchewan Geological Survey
 Research Council Report No. R2170-B-E-90.
 used drawing 73H_a.dwg