



Geology and Groundwater Resources  
of the Shellbrook Area (73G),  
Saskatchewan

### Map 3 Sutherland Group Sands and Gravels

- Upper unit of Sutherland Gp.  
(between Worman & Dundurn Fm)
- Lower unit of Sutherland Gp.  
(between Dundurn & Mennon Fm)

Surface elevation  $\odot$  Depth to top  
Depth to water  $\ominus$  Thickness  
(all units are in metres)  
(depths are below ground surface)

#### LEGEND

- Cross Section
- $\odot$  E-log only
- $\ominus$  E-log, geologist description
- $\odot$  E-log, driller's log
- Flowing well/testhole

TOWNSHIP

TOWNSHIP

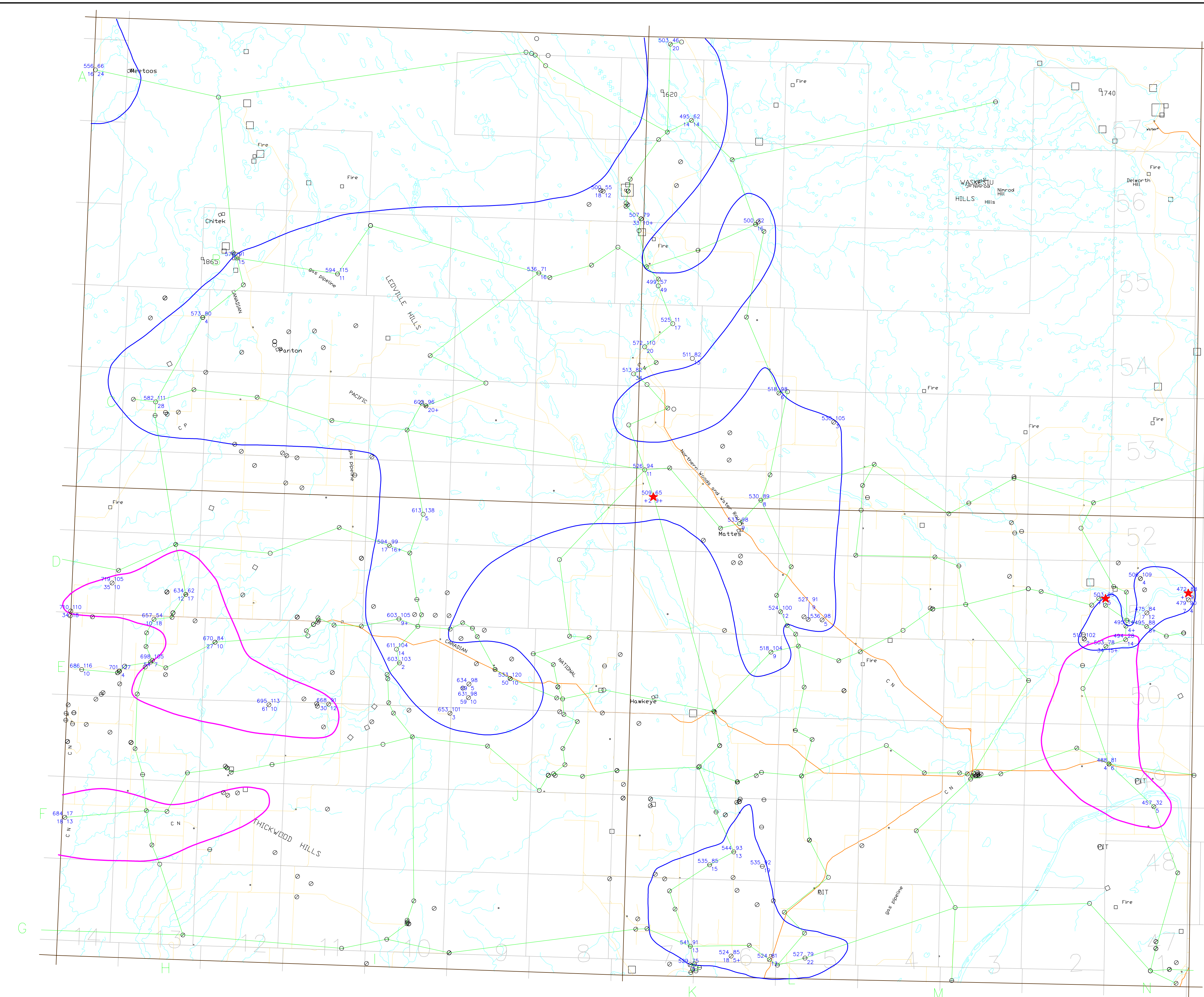
TOWNSHIP

TOWNSHIP

TOWNSHIP

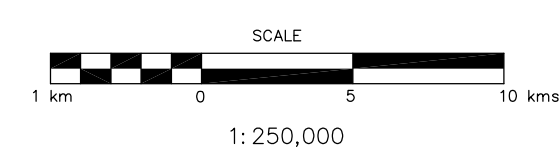
TOWNSHIP

RANGE



This document may not be copied without the consent of the authors. However, copies may be made, except for resale, for personal or internal use of the client, provided the original publication is cited where applicable.

These maps are accompanied by a series of cross sections which depict the subsurface units along the transects shown on the map. The maps and cross sections are representations of the data taken from the testholes and wells indicated on the maps. The boundaries outline areas in which the aquifer or geologic unit is likely to be found. Aquifers and other geologic units may not always occur continuously within the areas shown, may not be found at a specific site or may occur at elevations other than those indicated. Discontinuous water bearing zones may be found outside the boundaries shown.



nad 83 extended zone 13  
DIGITAL BASE MAP FROM CSMA

A portion of this work was done under contract to the Saskatchewan Water Corporation and the Geological Survey of Canada. This support is gratefully acknowledged.



Accompanies:  
Millard, M.J., 1994: Geology and Groundwater Resources of the Shellbrook Area (73G), Saskatchewan. Saskatchewan Research Council Report R-1210-9-E-94

Acad\_drawing/73G\_gg1.dwg