



Geology and Groundwater Resources
of the Shellbrook Area (73G),
Saskatchewan

Map 1b Bedrock Surface Geology and Topography

- Kalc**
- Ashville Fm.—Lower Colorado Gp.
- Klpuk**
- Lea Park Fm.—Upper Colorado Gp.

— 000 —
Contour of bedrock topography
(25 metre contours)

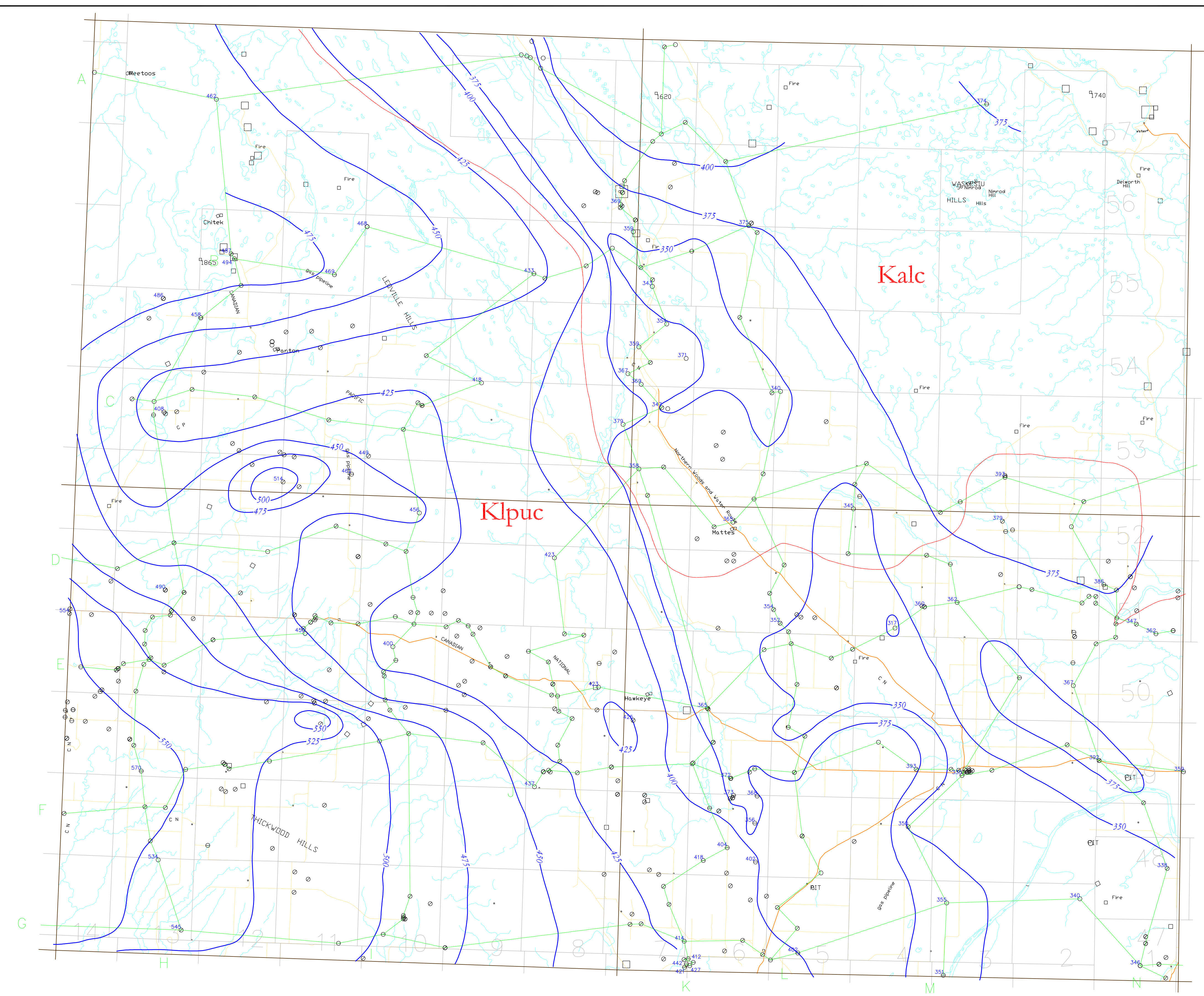
— Formation Extent

LEGEND

- F — F' Cross Section
- ⁶¹² Elevation of bedrock, in metres
above sea level
- E-log only
- ⊖ E-log, geologist description
- ⊗ E-log, driller's log
- ★ Flowing well/testhole

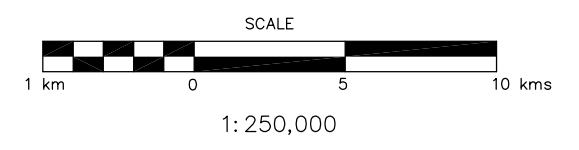
TOWNSHIP

RANGE



This document may not be copied without the consent of the authors. However, copies may be made, except for resale, for personal or internal use of the client, provided the original publication is cited where applicable.

These maps are accompanied by a series of cross sections which depict the subsurface units along the transects shown on the map. The maps and cross sections are representations of the data taken from the testholes and wells indicated on the maps. The boundaries outline areas in which the aquifer or geologic unit is likely to be found. Aquifers and other geologic units may not always occur continuously within the areas shown, may not be found at a specific site or may occur at elevations other than those indicated. Discontinuous water bearing zones may be found outside the boundaries shown.



map 83 extended zone 13
DIGITAL BASE MAP FROM CSMa

A portion of this work was done under contract to the Saskatchewan Water Corporation and the Geological Survey of Canada. This support is gratefully acknowledged.



Accompanies:
Millard, M.J., 1994: Geology and Groundwater Resources of the Shellbrook Area (73G), Saskatchewan. Saskatchewan Research Council Report R-1210-9-E-94

Acad. drawing: 73G_gpf.dwg