

L-L'

73G

122

202

203

204

205

103

206

207

208

69

209

210

211

212

213

31

214

215

216

217

218

20

9

600m

500m

400m

300m

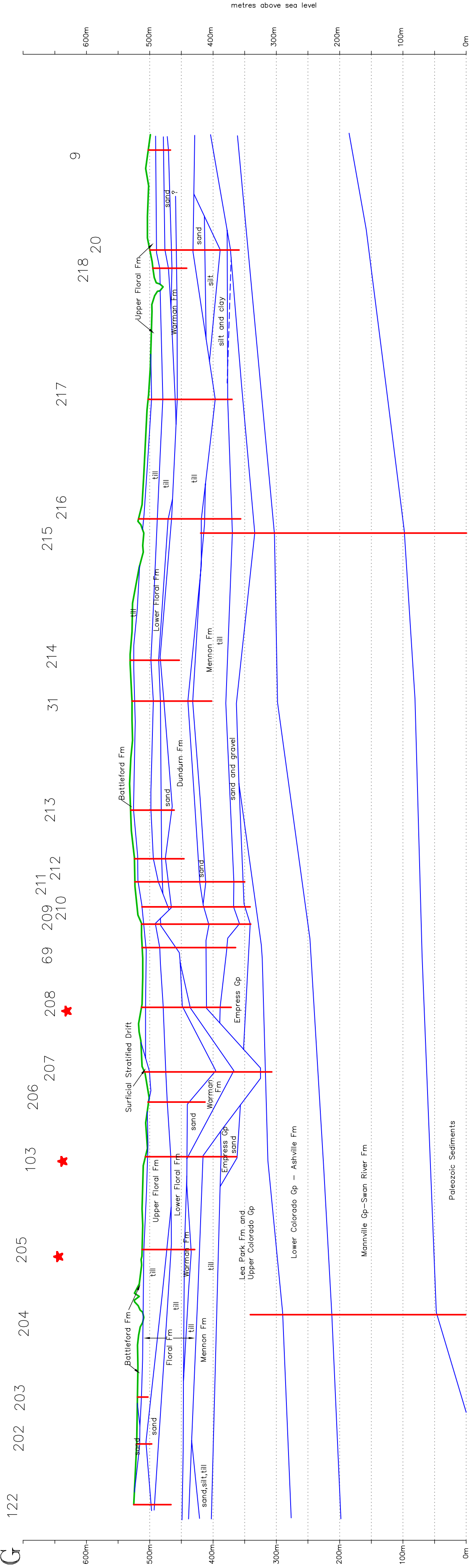
200m

100m

0m

metres above sea level

metres above sea level



This document may not be copied without the consent of the authors. However, copies may be made, except for resale, provided the original publication is cited where applicable.

**LIMITATIONS:** While site where testhole logs are available the geologic contacts are inferred and represent a geologic model that are believed to best fit the information.

★ Flowing well

Accompanies: 1990: Geology and Millard, M.J. Groundwater Resources of the Shellbrook Area (73G), Saskatchewan, Saskatchewan Research Council Report No. R1210-9-E-94.

acad drawing 73g-L.dwg



Environment Branch  
Energy and Resources



Shellbrook Area  
73G  
CROSS SECTION  
L-L'

Testhole or Well