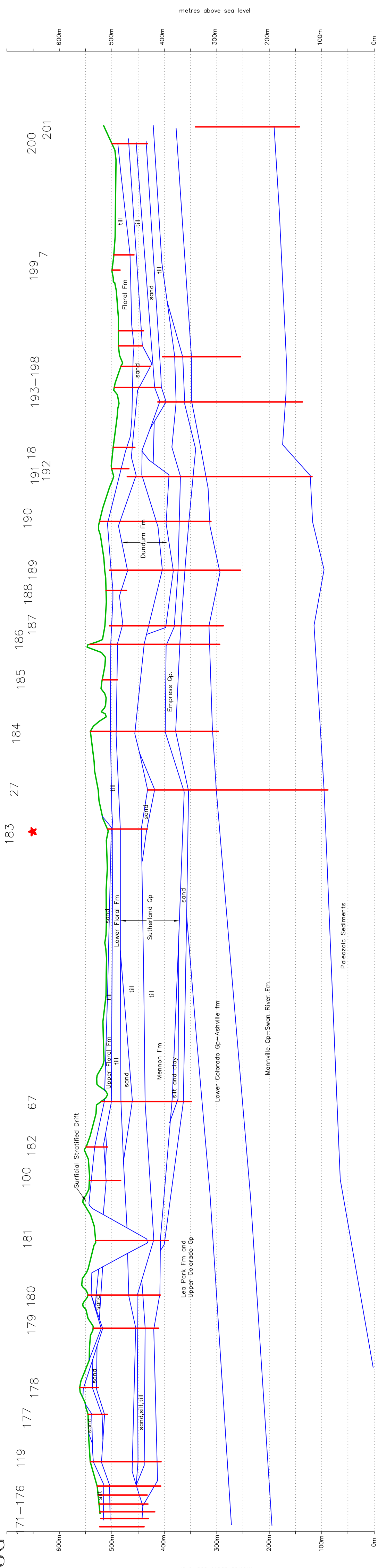


K-K'
73G



This document may not be copied without the consent of the authors. However, copies may be made, except for resale, provided the original publication is cited where applicable.

LIMITATIONS:
Except at testhole sites where paleogeological logs are available, the thickness and lateral extent of the units shown on this model have been estimated from available information. The model has been prepared to best fit the information.

★ Flowing well

Testhole or Well

Accompanies:
Atiland, M.J., 1990: Geology and Groundwater Resources of the Shellbrook Area (73G), Saskatchewan. Saskatchewan Research Council Report No. R210-9-E-94.
see drawing 73g_k.dwg



Shellbrook Area
73G
CROSS SECTION
K-K'