

J-J'
73G

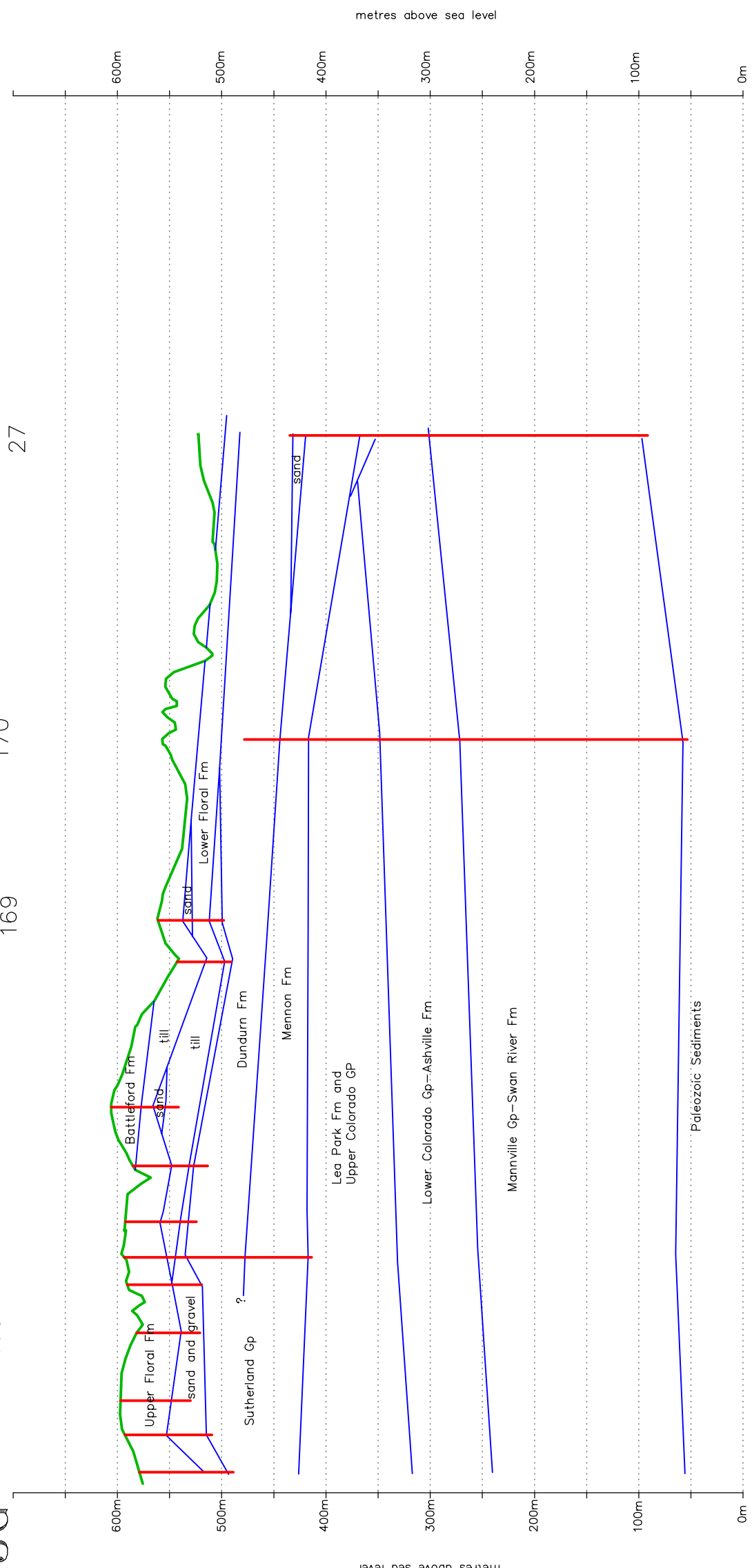
65

97 161 162 163 164 165 166 167

168 169

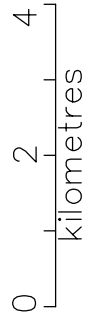
170

27



This document may not be copied without the consent of the authors. However, copies may be made, except for resale, provided that the original source is acknowledged and provided the original publication is cited where applicable.

LIMITATIONS: While this geological map is available for use, the geologic contacts are inferred and represent geologic models that are believed to best fit the information.



Shellbrook Area
73G
CROSS SECTION
J-J'

Testhole or Well

Accompanies: 1990: *Geology and Millard, M.J. Groundwater Resources of the Shellbrook Area (73G)*, Saskatchewan, Saskatchewan Research Council Report No. R1210-9-E-94.
and drawing 73g-f.dwg