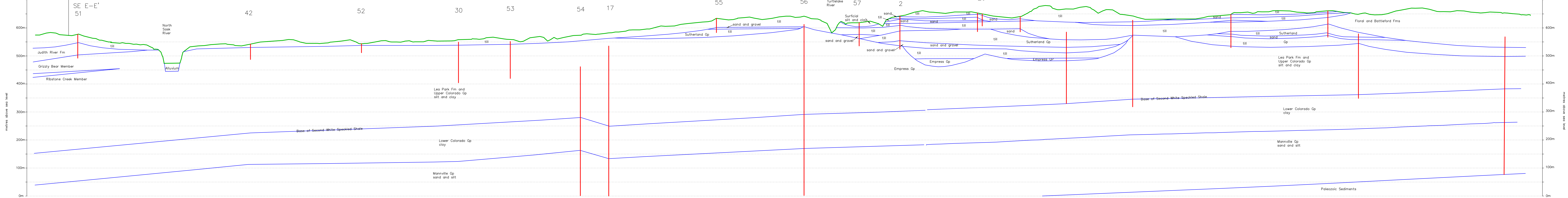


73F



This document may not be copied without the consent of the authors. However, copies may be made, except for resale, for personal or internal use of the client, provided the original publication is cited where applicable.

EXPLANATIONS:
 Stars at testhole sites where geologic logs are available. The geologic contacts are inferred and represent geologic models that are believed to best fit the information.



St. Walburg Area
 73F
 CROSS SECTION
 SE E-E' NE D-D'

Testhole or Well

★ Flowing well

Accompanies:
 Millard, M.J., 1990: Geology and Groundwater Resources of the St. Walburg Area (73F), Saskatchewan. Saskatchewan Research Council Report No. R1210-7-E-90.

acad drawing 73c.dwg