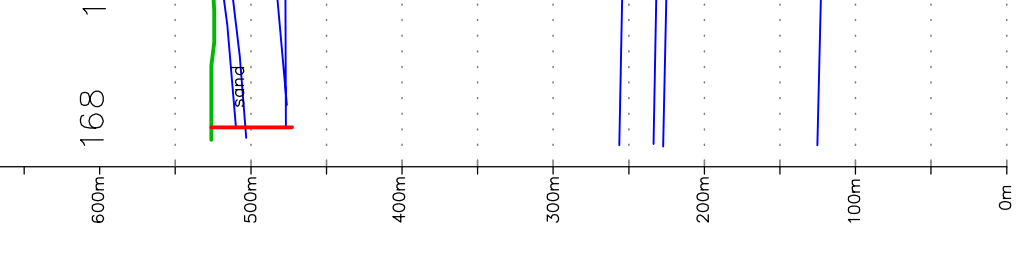


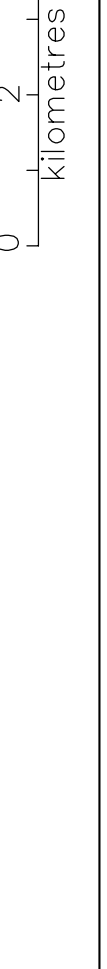
# 73A

73A SE H-H'



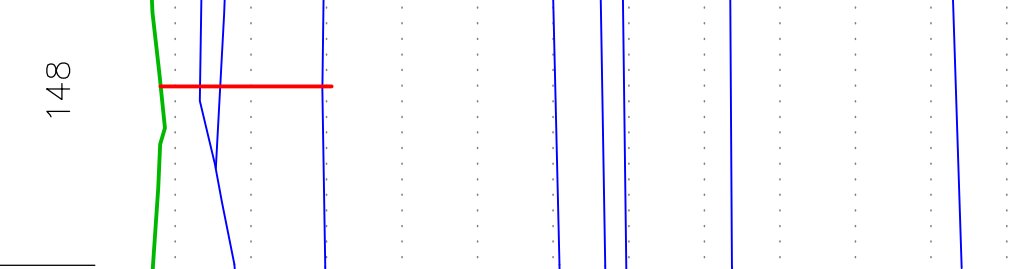
This document may not be copied without the consent of the author. It is intended for personal or internal use of the client, provided the original publication is cited where applicable.

**WARNINGS:**  
 This document contains information that is confidential and proprietary to the author. It is intended for personal or internal use of the client, provided the original publication is cited where applicable.



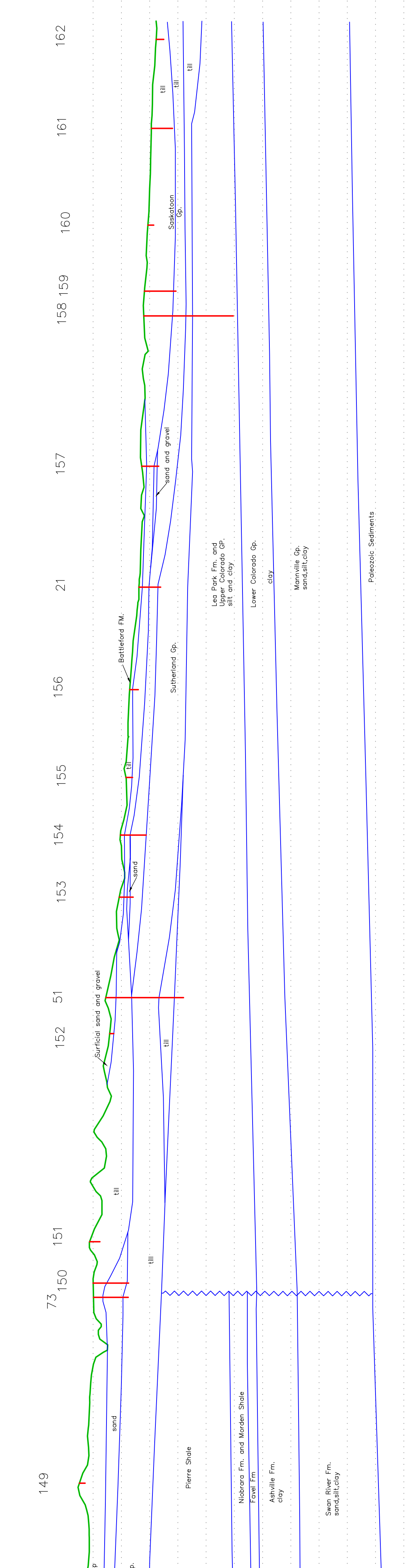
# 73A

73A NE G-G'



This document may not be copied without the consent of the author. It is intended for personal or internal use of the client, provided the original publication is cited where applicable.

**WARNINGS:**  
 This document contains information that is confidential and proprietary to the author. It is intended for personal or internal use of the client, provided the original publication is cited where applicable.



This document may not be copied without the consent of the author. It is intended for personal or internal use of the client, provided the original publication is cited where applicable.

**WARNINGS:**  
 This document contains information that is confidential and proprietary to the author. It is intended for personal or internal use of the client, provided the original publication is cited where applicable.



South West  
 Geological Services

Melfort Area  
 73A  
 CROSS SECTION  
 SE H-H' NE G-G'

metres above sea level

600m  
500m  
400m  
300m  
200m  
100m  
0m

Flowing well

Accompanying:  
 Atkinson, M.J., 1990: Geology and  
 Groundwater Resources of the  
 Melfort Area (73A). Saskatchewan  
 Research Council Report No. R90-6-E-90.  
 ead drawing 73a.dwg