

Geology and Groundwater Resources
of the Melfort Area (73A),
Saskatchewan

Map 5 Bedrock Surface Geology and Topography

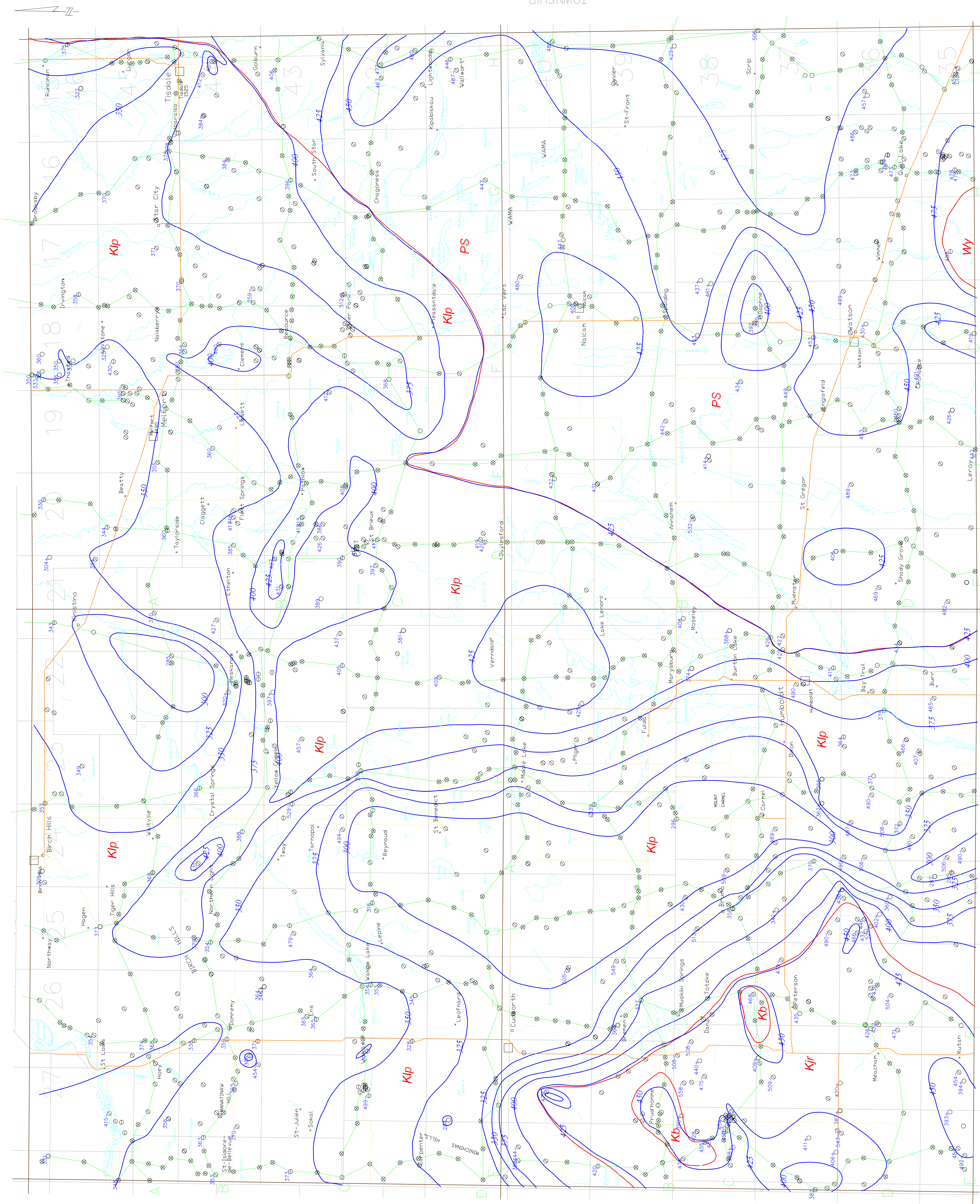
- PS** – Pierre Shale
- Kb** – Bearpaw Formation
- Kjr** – Judith River Formation
- Klp** – Lea Park Formation
- Wy** – Wynyard Formation

600
Contour of bedrock topography
(25 metre contours)

Formation Extent

LEGEND

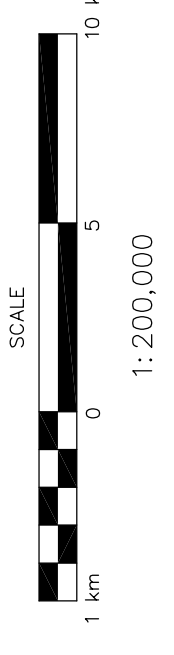
- F — F' — Cross Section
- 412 — Elevation of bedrock, in metres above sea level
- O — E-log only
- E — E-log, geologist description
- D — E-log, driller's log
- X — Driller's log



This document may not be copied without the consent of the authors. However, copies may be made, except for resale, for personal or internal use of the client, provided the original publication is cited where applicable.

These maps are accompanied by a series of cross sections which depict the subsurface units along the transects shown on the map. The maps and cross sections are representations of the data taken from the testholes and wells indicated on the maps. The boundaries outline areas in which the aquifer or geologic unit is likely to be found. Aquifers and other geologic units may not always occur continuously within the areas shown, may not be found at a specific site or may occur at elevations other than those indicated. Discontinuous water bearing zones may be found outside the boundaries shown.

A portion of this work was done under contract to the Saskatchewan Water Corporation. This support is gratefully acknowledged.



not 83 extended zone 13
DIGITAL BASE MAP FROM CSMA



Accompanies:
Millard, M.J., 1990: Geology and Groundwater Resources of the Melfort Area (73A), Saskatchewan. Saskatchewan Research Council Report R-1210-6-E-90

and drawing 754_99f.dwg