

M

F

E

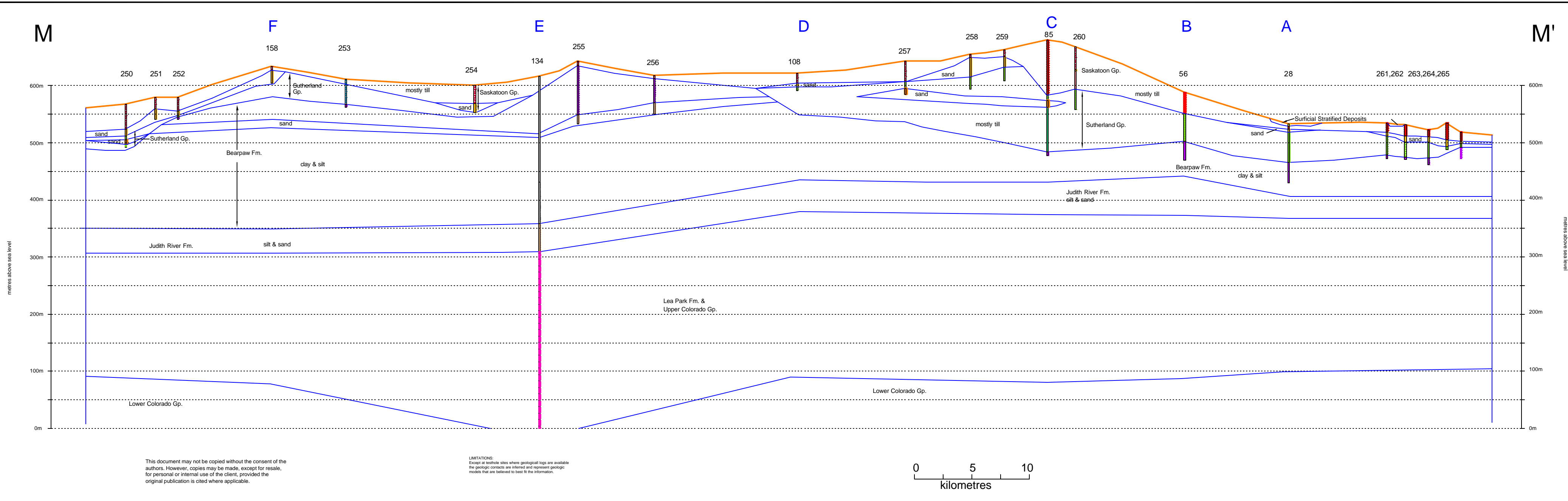
D

C

B

A

M'



Environment Branch
Resources/Environment Group



Rosetown Area
720
CROSS SECTION
M-M'

Legend

- Undifferentiated Drift
- Steel casing/ Undifferentiated Bedrock
- Surficial Stratified Deposits
- Saskatoon Gp.
- sand
- Sutherland Gp.
- sand
- Sutherland Gp.
- Empress Gp.
- Tertiary Undifferentiated
- Bearpaw Fm.
- Bearpaw sand members
- Bearpaw Fm.
- Judith River Fm.
- Lea Park Fm. & Upper Colorado Gp.
- Lower Colorado Gp.

Accompanies:
Simpson, M.A., 1998: *Geology and Hydrostratigraphy of the Rosetown Area (720), Saskatchewan, Saskatchewan Research Council Report No. 10416-2C98.*

acad drawing 720C_M.dwg

This document may not be copied without the consent of the authors. However, copies may be made, except for resale, for personal or internal use of the client, provided the original publication is cited where applicable.

LIMITATIONS:
Except at wellsite sites where geological logs are available the geologic contacts are inferred and represent geologic models that are believed to best fit the information.

