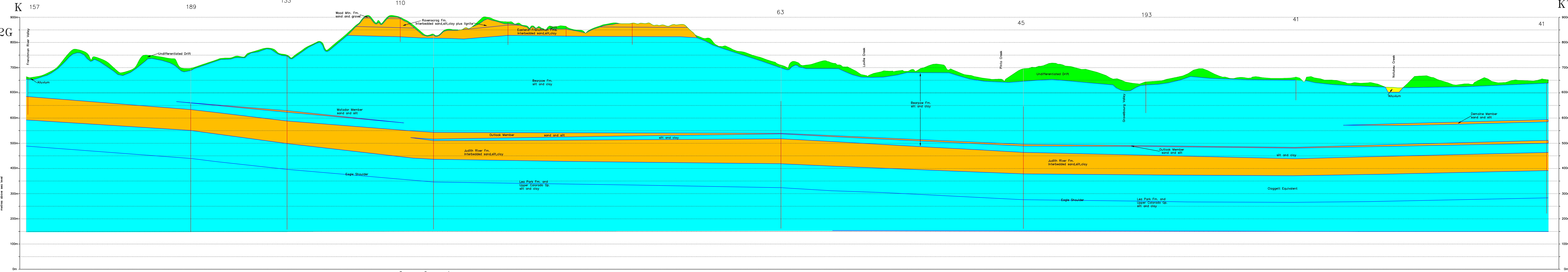


72G



This document may not be copied without the consent of the authors. However, copies may be made, except for resale, for personal or internal use of the client, provided the original publication is cited where applicable.

CAUTION: Testhole sites where geological logs are available. The geologic contents are believed and reported geologic models that are believed to best fit the information.

Wood Mountain Area
72G
CROSS SECTION
K - K'

- Testhole or Well
- Drift-aquifer
- Drift-aquifer
- Bedrock-aquifer
- Bedrock-aquifer
- Flowing well

Accompanied:
Meethuis, H. and Simpson, M., 2007
Groundwater Resources of the Wood Mountain Area (72G), Saskatchewan, Saskatchewan Research Council Report No.12177-1E07.
acad drawing 72G_k.dwg