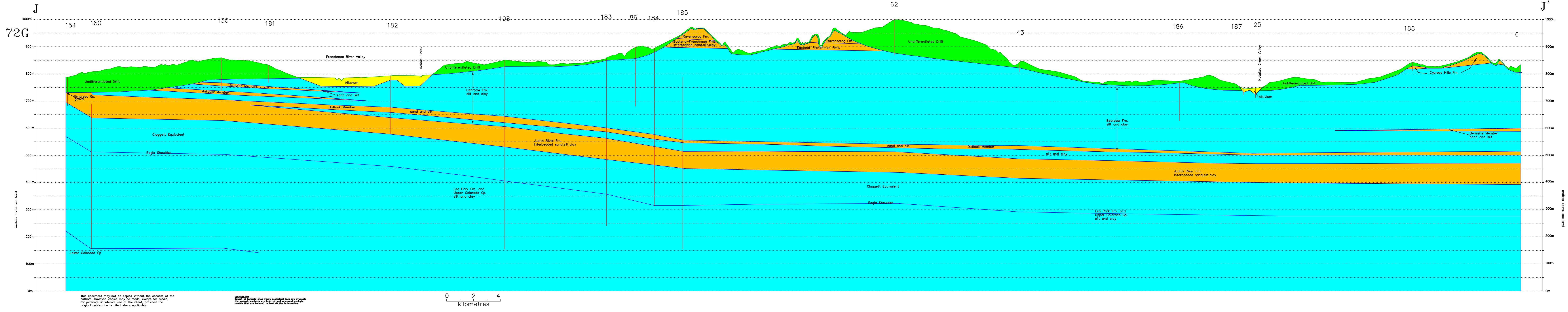


Wood Mountain Area
72G
CROSS SECTION
J - J'

- Testhole or Well
- Drift- aquifer
- Drift- aquitard
- Bedrock- aquifer
- Bedrock- aquitard
- Flowing well

Accompanied:
Maathuis, H. and Stimpson, M., 2007
Groundwater Resources of the Wood Mountain
Area (72G), Saskatchewan. Saskatchewan
Research Council Report No. 12177-1E07.

acad drawing 72G_J.dwg



This document may not be copied without the consent of the authors. However, copies may be made, except for resale, for personal or internal use of the client, provided the original publication is cited where applicable.

Limitations: Data in this table are where geological logs are available. The geologic contacts are inferred and represent geologic maps that are believed to best fit the information.

