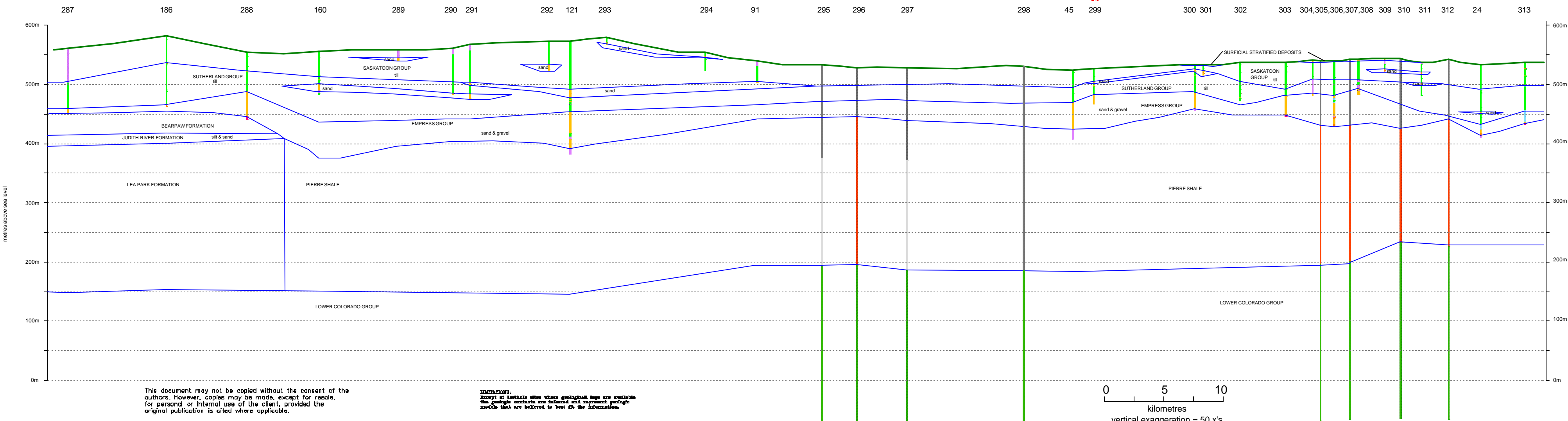


72P
J



Enhancement Search
Research/Development Group



Wynyard Area
72P
CROSS SECTION
J-J'

Legend

Lithology (SWC & SRC database)

- Clay
- Silt
- Sand
- Sand & Gravel
- Till
- Shale

Stratigraphic Units (Oil testholes)

- Steel Casing
- Fm. Top Unknown
- Bearpaw Fm.
- Judith River Fm.
- Lea Park Fm.
- Lower Colorado Gp.
- Pierre Shale

★ Flowing well

Accompanies:
Simpson, M.A., 2000: Geology and
Hydrostratigraphy of the Wynyard
Area (72P), Saskatchewan. Saskatchewan
Research Council Report No.10416-1C00.

acad drawing 72P_1.dwg

This document may not be copied without the consent of the authors. However, copies may be made, except for resale, for personal or internal use of the client, provided the original publication is cited where applicable.

LIMITATIONS:
Except as indicated otherwise geological logs are available the geological contacts are defined and interpreted using methods that are believed to best fit the information.

0 5 10
kilometres
vertical exaggeration = 50 x's