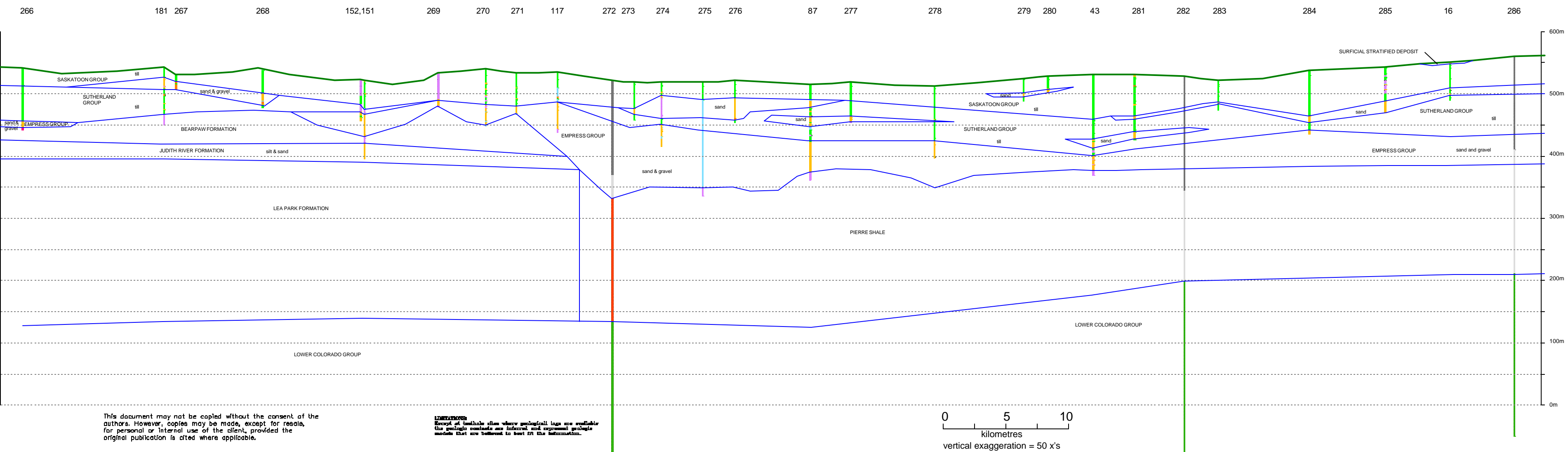


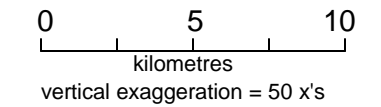
72P  
I

F EE D C B A



This document may not be copied without the consent of the authors. However, copies may be made, except for resale, for personal or internal use of the client, provided the original publication is cited where applicable.

**LIMITATIONS**  
Except as indicated where geological logs are available the geologic content is an inferred and approximate geologic model that is believed to best fit the information.



Wynyard Area  
72P  
CROSS SECTION  
I-I'

Legend

Lithology (SWC & SRC database)

- Clay
- Silt
- Sand
- Sand & Gravel
- Till
- Shale

Stratigraphic Units (Oil testholes)

- Steel Casing
- Fm. Top Unknown
- Bearpaw Fm.
- Judith River Fm.
- Lea Park Fm.
- Lower Colorado Gp.
- Pierre Shale

★ Flowing well

Accompanies:  
Simpson, M.A., 2000: Geology and Hydrostratigraphy of the Wynyard Area (72P), Saskatchewan. Saskatchewan Research Council Report No.10416-1C00.

acad drawing 72P\_L.dwg