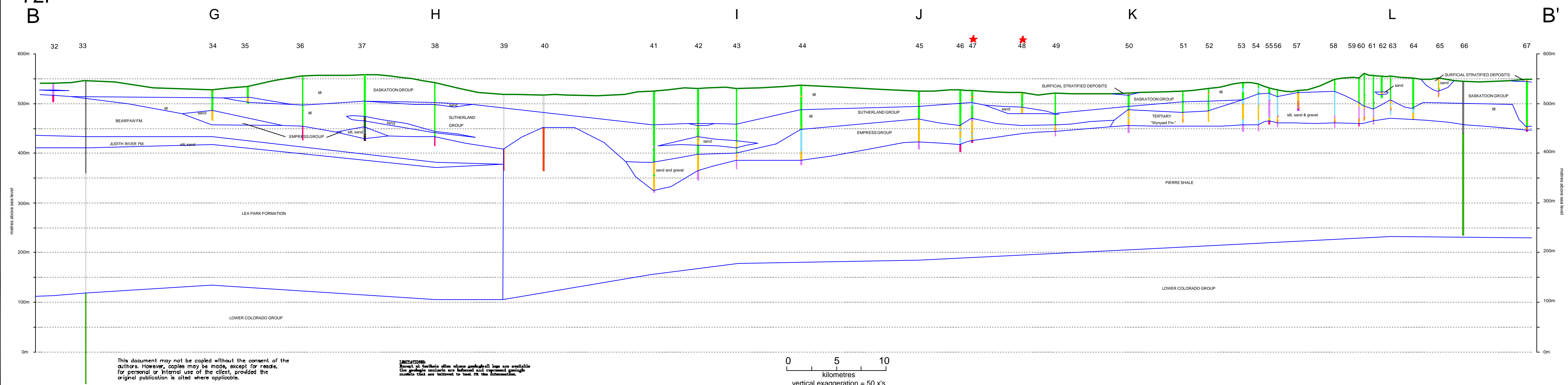
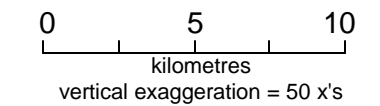


72P
B



This document may not be copied without the consent of the authors. However, copies may be made, except for resale, for personal or internal use of the client, provided the original publication is cited where applicable.

LIMITATIONS:
Except at the hole sites where geologic logs are available the geologic contacts are believed and interpreted geologic models that are believed to best fit the information.



Wynyard Area
72P
CROSS SECTION
B-B'

- Legend**
- Lithology (SWC & SRC database)
- Clay
 - Silt
 - Sand
 - Sand & Gravel
 - Till
 - Shale
- Stratigraphic Units (Oil testholes)
- Steel Casing
 - Fm. Top Unknown
 - Bearpaw Fm.
 - Judith River Fm.
 - Lea Park Fm.
 - Lower Colorado Gp.
 - Pierre Shale
- ★ Flowing well

Accompanies:
Simpson, M.A., 2000: *Geology and Hydrostratigraphy of the Wynyard Area (72P)*, Saskatchewan. Saskatchewan Research Council Report No.10-116-1000.

and drawing 72P_b.dwg