

Geology and Groundwater Resources  
of the Willow Bunch Lake Area (72H),  
Saskatchewan

### Map 5 Isopach Map of the Judith River Fm.

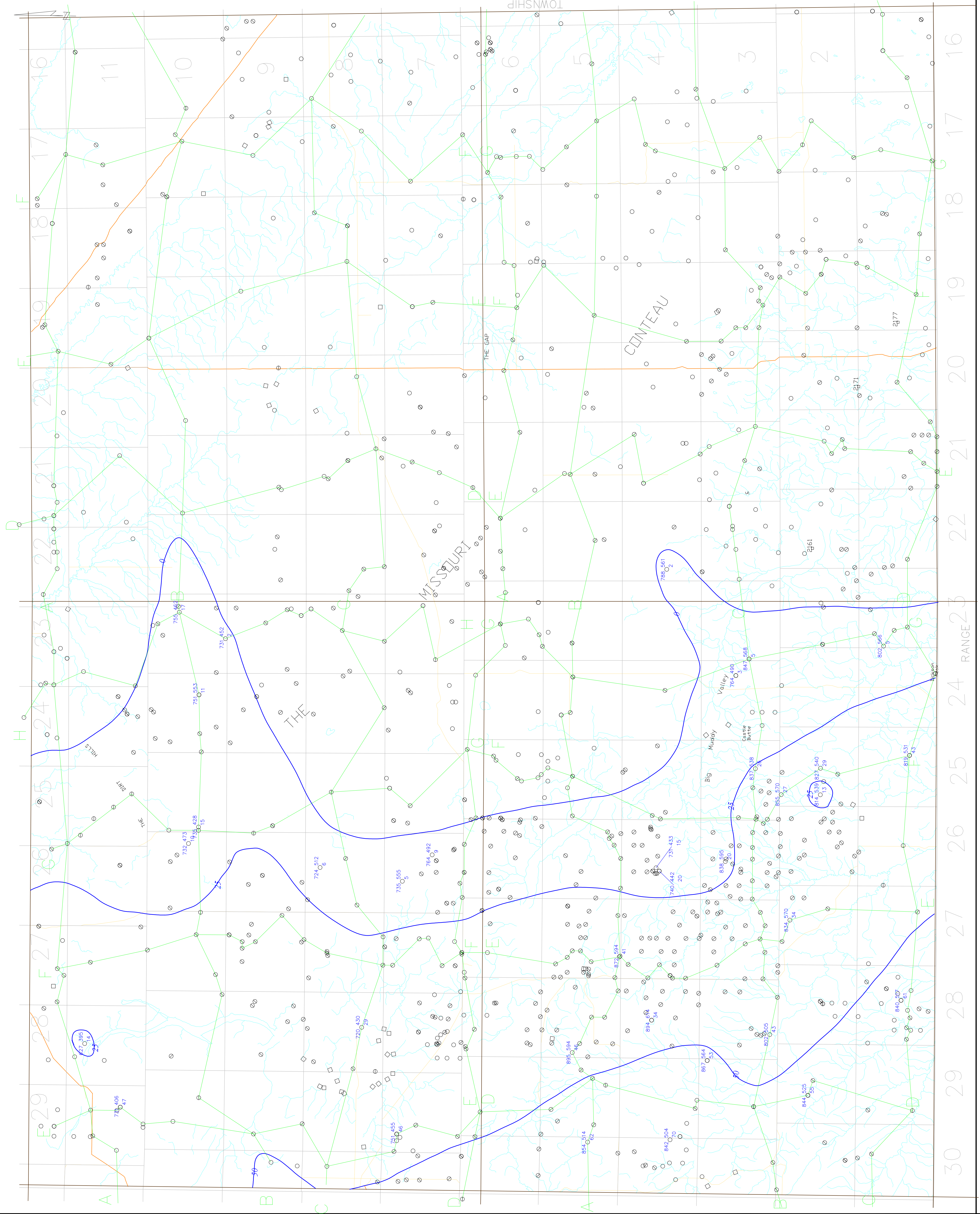
Isopach contour interval 25 m

Depth to water  
○ Thickness  
(all units are in metres)  
(depths are below ground surface)

#### LEGEND

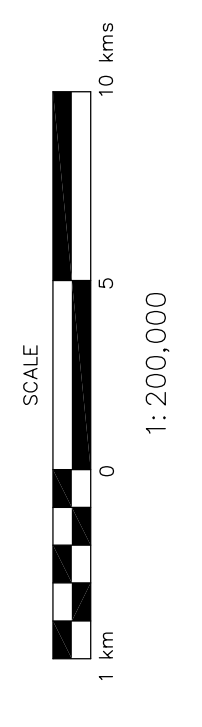
F—F' Cross Section

- E-log only
- ⊙ E-log, geologist description
- ⊗ E-log, driller's log
- SRC Observation Well
- ★ Flowing well/testhole



These maps are accompanied by a series of cross sections which depict the subsurface units along the transects shown on the map. The maps and cross sections are representations of the data taken from the testholes and wells indicated on the maps. The boundaries outline areas in which the aquifer or geologic unit is likely to be found. Aquifers and other geologic units may not always occur continuously within the areas shown, may not be found at a specific site or may occur at elevations other than those indicated. Discontinuity in water bearing zones may be found outside the boundaries shown.

This document may not be copied without the consent of the authors. However, copies may be made, except for resale, for personal or internal use of the client, provided the original publication is cited where applicable.



map 53 overlaid June 13  
DIGITAL BASE MAP FROM CSMA

A portion of this work was done under contract to the Saskatchewan Water Corporation. This support is gratefully acknowledged.



Accompanies:  
Millard, M.J., 1993: Geology and  
Groundwater Resources of the Willow Bunch  
Area (72H), Saskatchewan, Saskatchewan  
Research Council Report R-1210-1-E-93.  
Acad. drawing 23H.dwg