

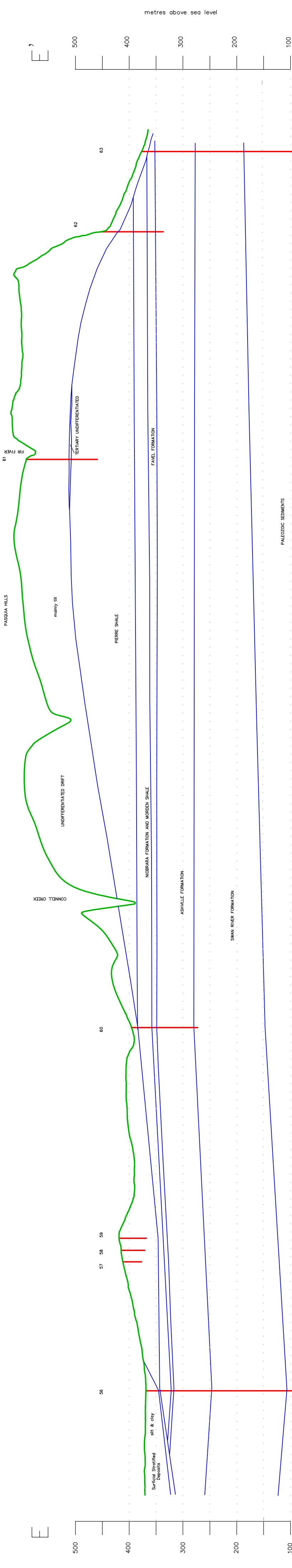


Environment Branch  
Resources/Environment Group

### Pasquia Hills 63E,F E-E', CROSS SECTION

Location of testhole/well  
indicates top and bottom

Accompanies SRC report R-1510-2-E-97  
Drawing name:63e\_e.dwg  
Date: February 1997



This document may not be copied without the consent of the authors. However, copies may be made, except for resale, for personal or internal use of the client, provided the original publication is cited where applicable.

**LIMITATIONS:**  
Except at testhole sites where geological logs are available the geologic contacts are inferred and represent geologic models that are believed to best fit the information.