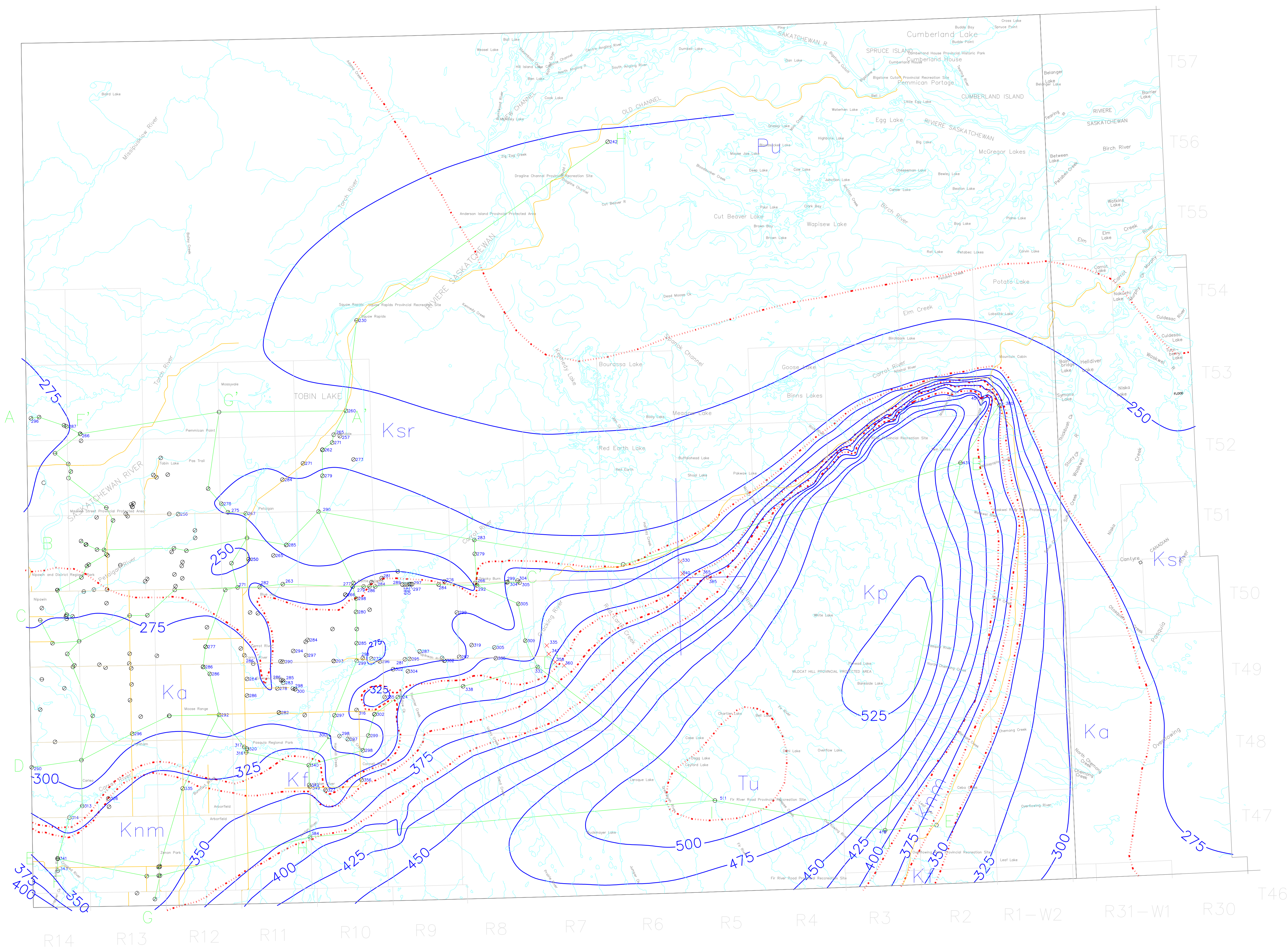
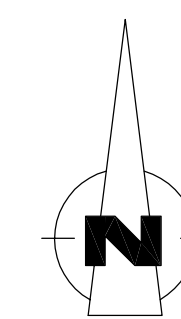


Geology and Groundwater Resources of the
Pasquia Hills Area (63E-F)

MAP 2

Bedrock Surface Geology
and Topography



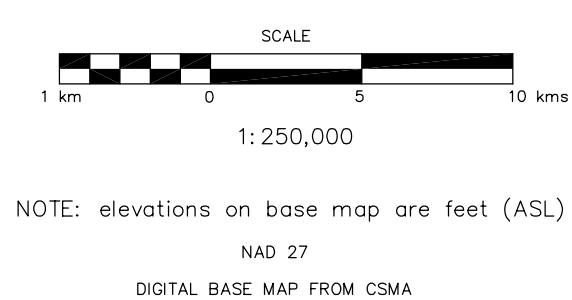
- Tu - Tertiary Undifferentiated:
gravels, sands, and silts.
- Kp - Pierre Shale: gray, noncalcareous silty clay and
clay, concretionary zones common near base
- Knm - Niobrara Formation: lower calcareous member is
composed of dark gray, chalk-speckled shales
upper member is composed of noncalcareous shales
and bentonite beds
Morden Shale: uniform, black, noncalcareous shale
with rare bentonite beds
- Kf - Favel Formation: dark gray, chalk-speckled, calcareous
clays, with lenses and stringers of limestone
and bentonite
- Ka - Ashville Formation: noncalcareous silt and clay
- Ksr - Swan River Formation: interbedded fine to coarse sands,
silt and clay, locally carbonaceous with thin coal seams
- Pu - Paleozoic Undifferentiated

Explanation of Symbols

- F — F' Cross Section
- E-log only
- ⊕ E-log, geologist description
- ⊗ E-log, driller's log
- x Measured section(outcrop)
(MacNeil and Caldwell, 1981)
- ⊙³³⁵ Bedrock surface elevation (MASL)
- Surface elevation ⊙ Depth to top
○ Depth to water ⊙ Thickness
- Geological Contact (inferred)
- 275 — Bedrock surface contour (CI=25m)

This document may not be copied without the consent of the authors. However, copies may be made, except for resale, for personal or internal use of the client, provided the original publication is cited where applicable.

These maps are accompanied by a series of cross sections which depict the subsurface units along the transects shown on the map. The maps and cross sections are representations of the data taken from the testholes and wells indicated on the maps. The boundaries outline areas in which the aquifer or geologic unit is likely to be found. Aquifers and other geologic units may not always occur continuously within the areas shown, may not be found at a specific site or may occur at elevations other than those indicated. Discontinuous water bearing zones may be found outside the boundaries shown.



Accompanies SRC Publication R-1510-2-E-97

Preliminary Map February 1997
A portion of this work was done under contract to the Saskatchewan Water Corporation.
This support is gratefully acknowledged.

ACAD Drawing No.: 63egw12.dwg
Date: February 1997