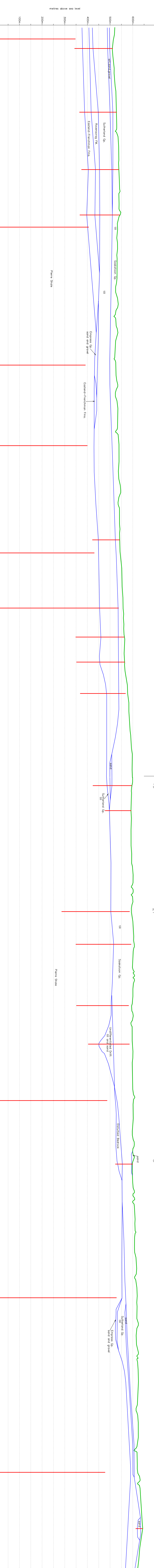


62F

62F SW F-E'

62F

62F NW E-E'



Weyburn/Virden Area
62E/F
CROSS SECTION
62F SW F-E' NW E-E'



T Testhole or Well
F Flowing well

Authors: **Stompans, M.A., 1988, Sedgwick and Simpson, M.A., 1988, Weyburn/Virden Area (62E/F), Saskatchewan, Saskatchewan Research Council Report No. R270-3-6-93**
 and **Weyburn 62F_A.dwg**

This document is the property of the Government of Saskatchewan. It is loaned to you for your use only. It is not to be reproduced, stored in a retrieval system, or transmitted in any form or by any means, electronic, mechanical, photocopying, recording, or by any information storage and retrieval system, without the prior written permission of the Government of Saskatchewan.