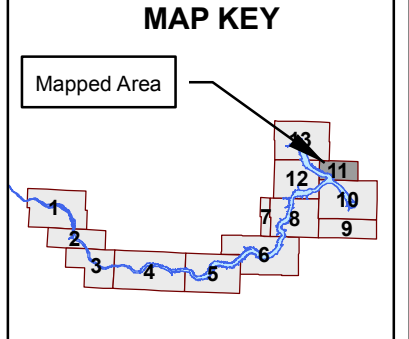
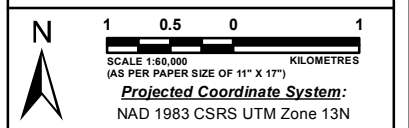


**WATER SECURITY AGENCY
RESERVOIR DEVELOPMENT
AREA LANDS
LAKE DIEFENBAKER
(ELBOW DISTRICT)**

- LEGEND**
- URBAN MUNICIPALITY
 - ROAD CLASSIFICATION**
 - Primary Highway
 - Secondary Highway
 - Municipal Roads
 - RAILWAY (Active)
 - WATERCOURSE
 - WATERBODY
 - SECTION
 - TOWNSHIP
 - LAKE DIEFENBAKER DISTRICTS
 - RESERVOIR DEVELOPMENT AREA BOUNDARY



Date:
Map Produced Jul. 16, 2014

Project Folder #:
H:\Geomatics\Projects\20080425_01_SK_LandProjectForProvincialCommittee\Mxd_files\Jim_Waggoner\Modified_Mxd

File Name:
RDA_Diefenbaker_Lake_Elbow_11x17.mxd

Map Produced By:
Water Security Agency, Geomatics

Paper Size:
Custom 279.4mm x 431.8mm (11 x 17inches)

Copyright:
Map © 2014, Government of Saskatchewan
All Datasets © 2014, Government of Saskatchewan.

Disclaimer:
WSA prepares maps with varying degrees of accuracy and completeness dependant on the circumstances and available data. WSA makes no representation that this map will be sufficient for all uses. The user is advised to confirm the information contained herein in the event that precision and currency of data are required.

