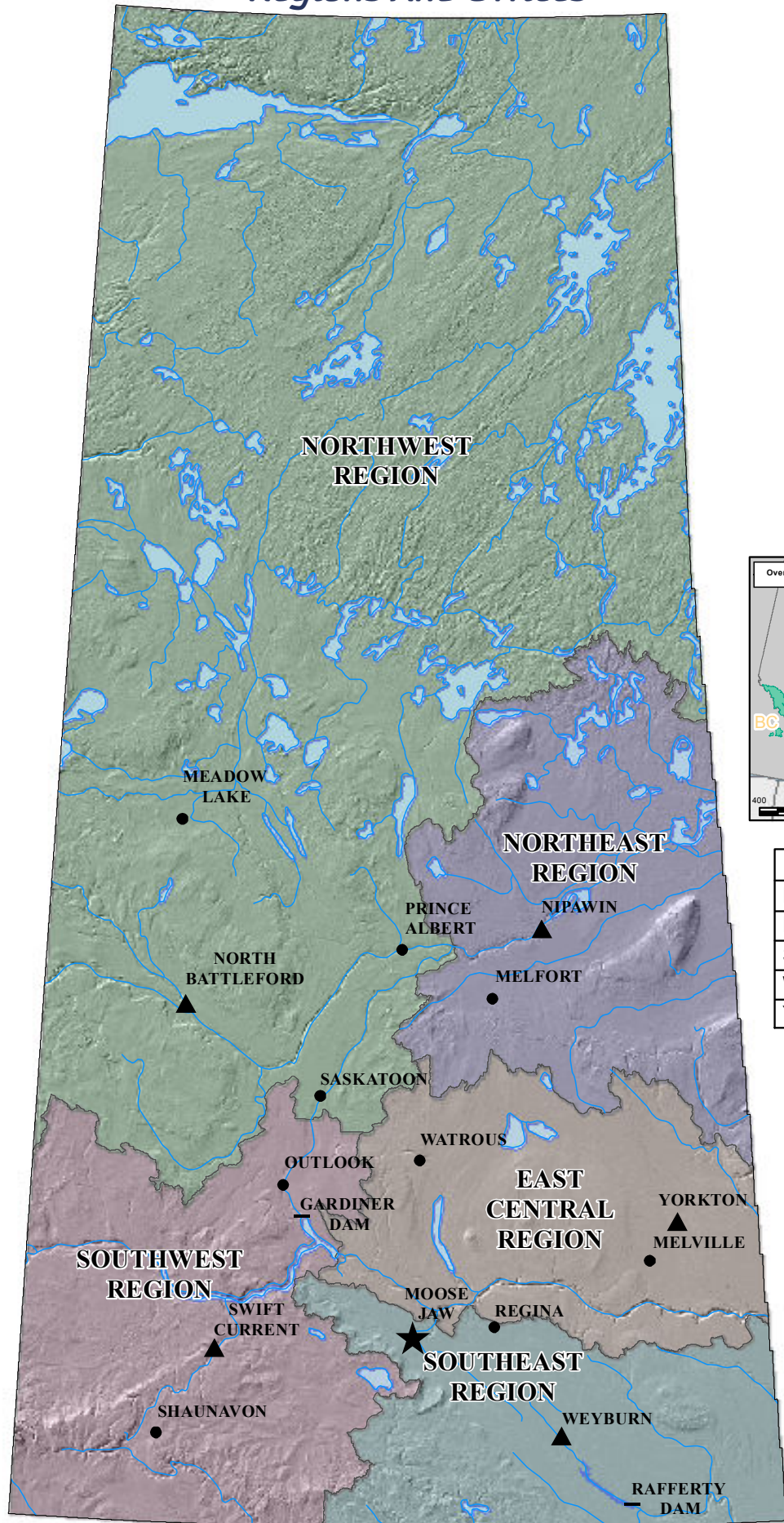


# Water Security Agency Regions And Offices



## LEGEND

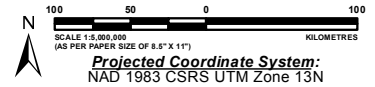
### WSA OFFICES

- ★ Head Office
- ▲ Regional Office
- Other Office
- Dam

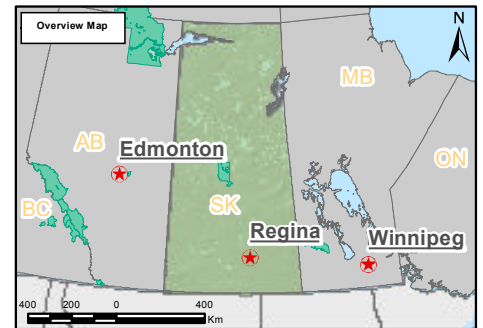
- ~ RIVERS
- ☪ LAKES

### WSA REGIONS

- East Central
- Northeast
- Northwest
- Southeast
- Southwest



Projected Coordinate System:  
NAD 1983 CSRS UTM Zone 13N



OFFICE	CONTACT
Nipawin	306-862-1750
North Battleford	306-446-7450
Swift Current	306-778-8257
Weyburn	306-848-2345
Yorkton	306-786-1490

#### Date:

Map Produced May, 22, 2013

#### Project Folder #:

H:\GIS

#### File Name:

Regions\_and\_Offices\_8.5x11.mxd

#### Map Produced By:

Water Security Agency, Geomatics

#### Paper Size:

A4 - 210 mm x 297 mm (8.5 x 11 inches)

#### Copyright:

Map © 2013, Government of Saskatchewan  
All Datasets © 2013, Government of Saskatchewan.

#### Disclaimer:

WSA prepares maps with varying degrees of accuracy and completeness dependant on the circumstances and available data. WSA makes no representation that this map will be sufficient for all uses. The user is advised to confirm the information contained herein in the event that precision and currency of data are required.